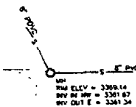
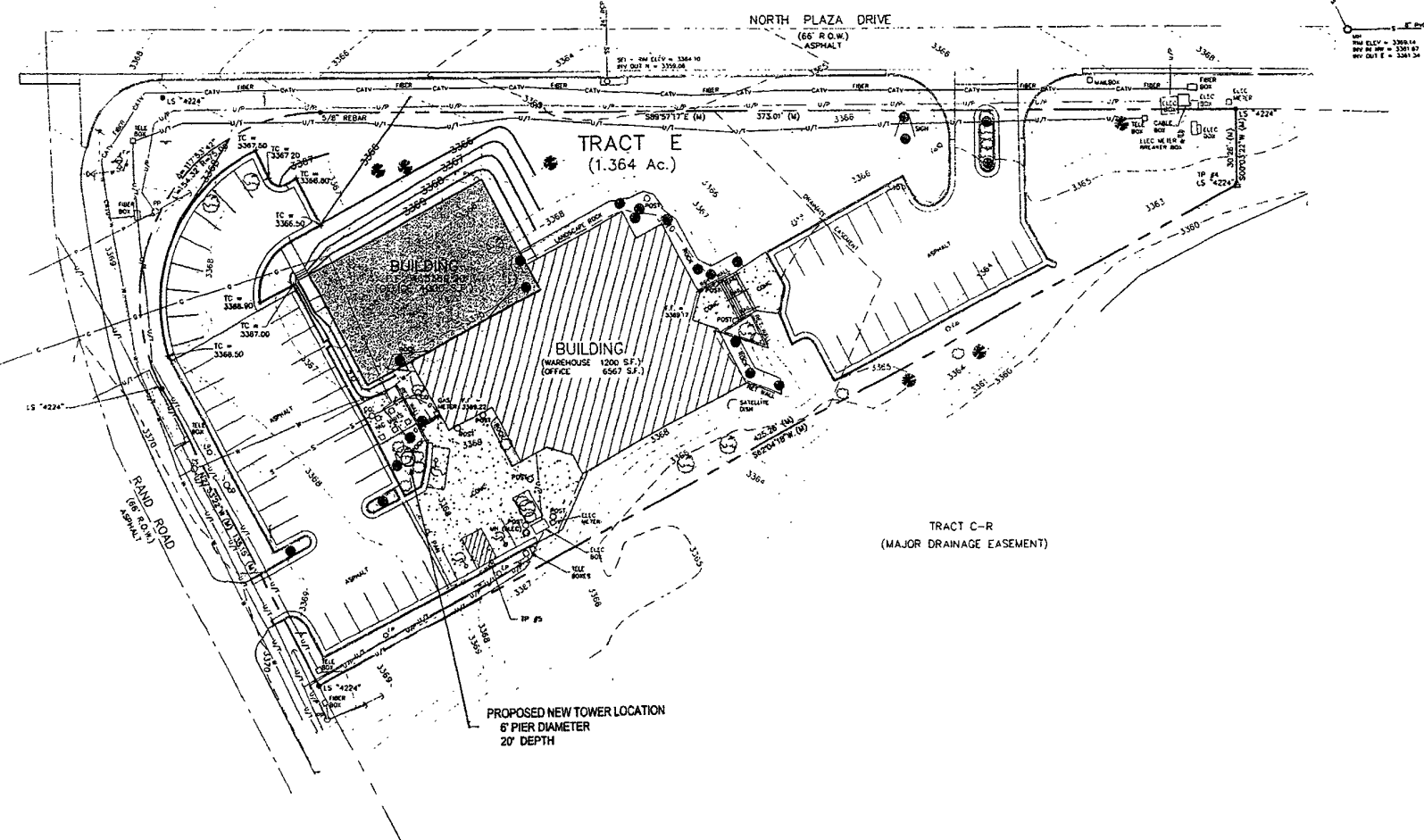


02SR028

TP #3



SEPT 27, 2001  
SCALE 1" = 20'  
CONTOUR INT 1'



- LEGEND**
- 3368.00 spot elevation
  - 1/2" FINISH
  - WATER VALVE
  - POWER POLE
  - CURB
  - WEL (DEPRESSION)
  - FENCE
  - CURB & GUTTER
  - WATER LINE
  - POWER LINE
  - UNDERGROUND TELEPHONE LINE
  - SANITARY SEWER LINE
  - STORM SEWER LINE
  - CONTOUR (1')
  - CONTOUR (5')
  - 5/8" x 1/2" REBAR W/SPACER - 24" ON CENTER
  - FOUND SURVEY MONUMENT
  - UTILITY POLE
  - PROPOSED CONTOUR

**BENCH MARK:**  
ELEVATIONS BASED ON CITY OF RAPID CITY BENCH MARK NETWORK (SPERM MONUMENT CPM LOCATED AT THE NE CORNER OF THE INTERSECTION OF SOUTH PLAZA DRIVE & SAND ROAD WITH A PUBLISHED ELEVATION OF 3343.35)

- UTILITIES**
- Golden Dakota Gas & Water/Transmission Center  
815 EVERGREEN HEIGHTS DRIVE  
PITTSBURGH, PA 15228  
1-800-781-7474
- Natural Gas:**  
Northern Dakota Utilities  
P.O. Box 1028  
Rapid City, SD 57709  
605/342-0180
- Telephone:**  
U.S. West Communications  
P.O. Box 1400  
Rapid City, SD 57709  
765-1111
- Electricity:**  
Black Hills Power & Light Co.  
P.O. Box 1400  
Rapid City, SD 57709  
605/342-3200
- Cable TV:**  
Bohn 882 Fluorion  
309 Overland Ave  
Rapid City, SD 57702  
605/355-0732
- Cable TV:**  
360/centric Communications  
2197 W Chicago Street  
Rapid City, SD 57702  
605/348-7444
- Water and Sewer:**  
City of Rapid City  
Water Department  
1115 Mountain View Drive  
Rapid City, SD 57702  
605/344-0780

The locations of existing underground utilities are shown in an approximate way only and have not been independently verified by the owner or its representatives. The contractor shall determine the exact location of all existing utilities before commencing work, and shall be fully responsible for any and all damages which might be occasioned by the contractor's failure to locate and protect any and all underground utilities.

ALL CONSTRUCTION SHALL BE IN ACCORDANCE WITH 1994 EDITION OF THE CITY OF RAPID CITY STANDARD SPECIFICATIONS FOR PUBLIC WORKS CONSTRUCTION.

PREPARED FOR:  
**PETE NEUMANN  
GUSTAFSON BUILDERS  
4101 DEADWOOD AVE  
RAPID CITY, S.D. 57702  
605/342-3144**

LOCATION:  
**TRACT E  
OF FOUNTAIN SPRINGS BUSINESS PARK  
LOCATED IN SE1/4 OF NW1/4  
SECTION 27, T2N, R7E, BHM  
RAPID CITY, PENNINGTON COUNTY, SOUTH DAKOTA**

**PRELIMINARY**

**Renner & Sperlach Engineering Co.**  
810 SIXTH ST. • RAPID CITY, SD 57701 • 605/342-1181  
FAX: 605/342-1405 • E-MAIL: RSEI@AOL.COM

REVISIONS	
DATE	REVISION

PROJECT:  
**GRADING PLAN  
GOLDEN WEST TELE-TECH  
RAPID CITY, PENNINGTON COUNTY, SOUTH DAKOTA**

SURVEY NO. 10  
SURVEY DATE 9/18/01  
DRAWN BY: LAR  
DESIGNED: GDR  
APPROVED: GDR  
JOB NO. 1672

SHEET  
2  
OF  
3