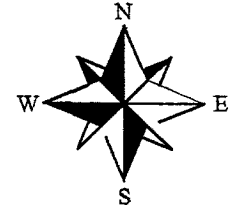
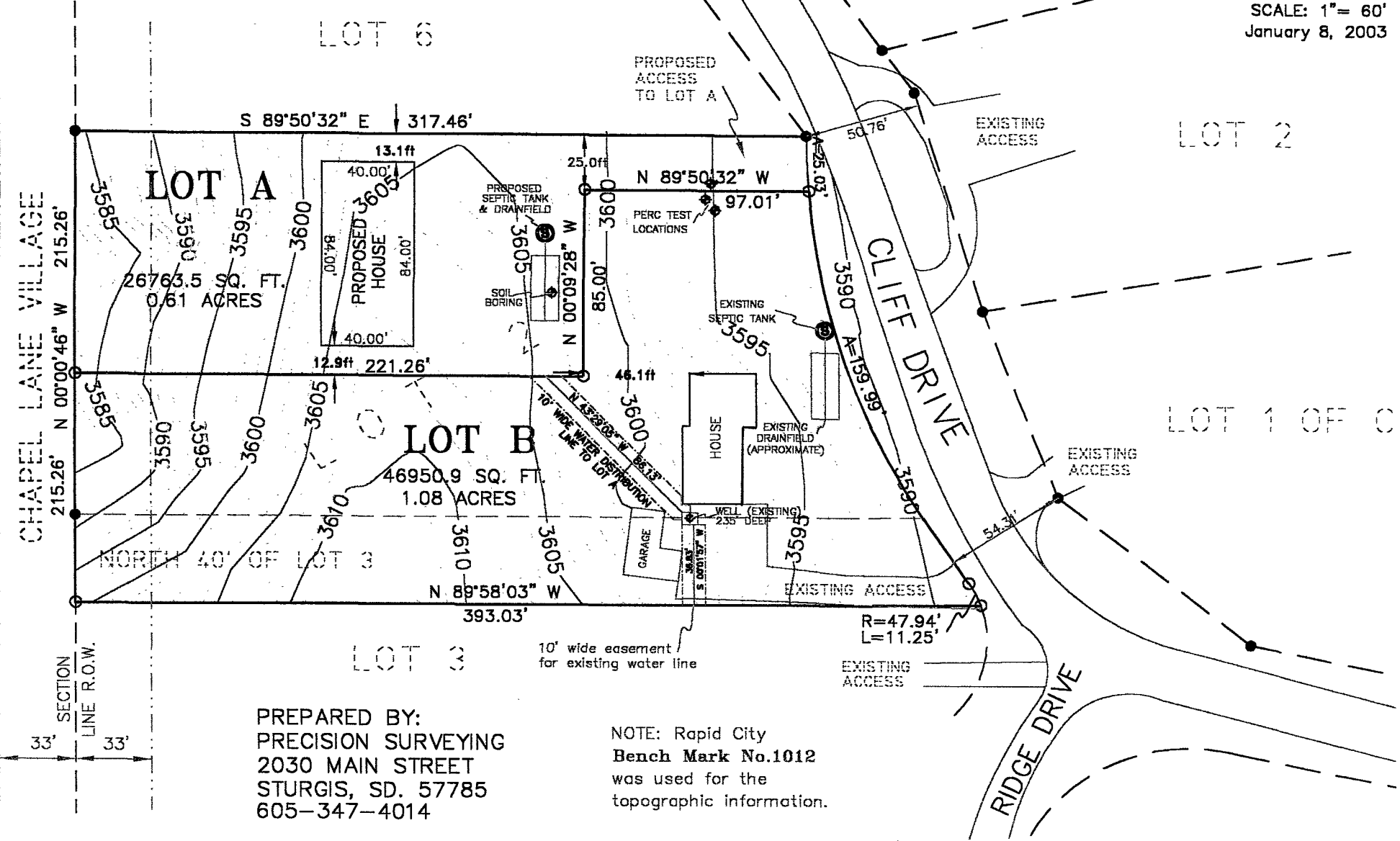


LAYOUT PLAT OF LOTS A&B IN BLOCK B OF CANYON LAKE HEIGHTS SUBDIVISION, (FORMELY LOT 2 AND THE NORTH 40' OF LOT 3 IN BLOCK B). LOCATED IN NW1/4 OF SECTION 16, T1N, R7E, BHM., PENNINGTON COUNTY, SOUTH DAKOTA.



SCALE: 1" = 60'
January 8, 2003



PREPARED BY:
PRECISION SURVEYING
2030 MAIN STREET
STURGIS, SD. 57785
605-347-4014

NOTE: Rapid City
Bench Mark No.1012
was used for the
topographic information.