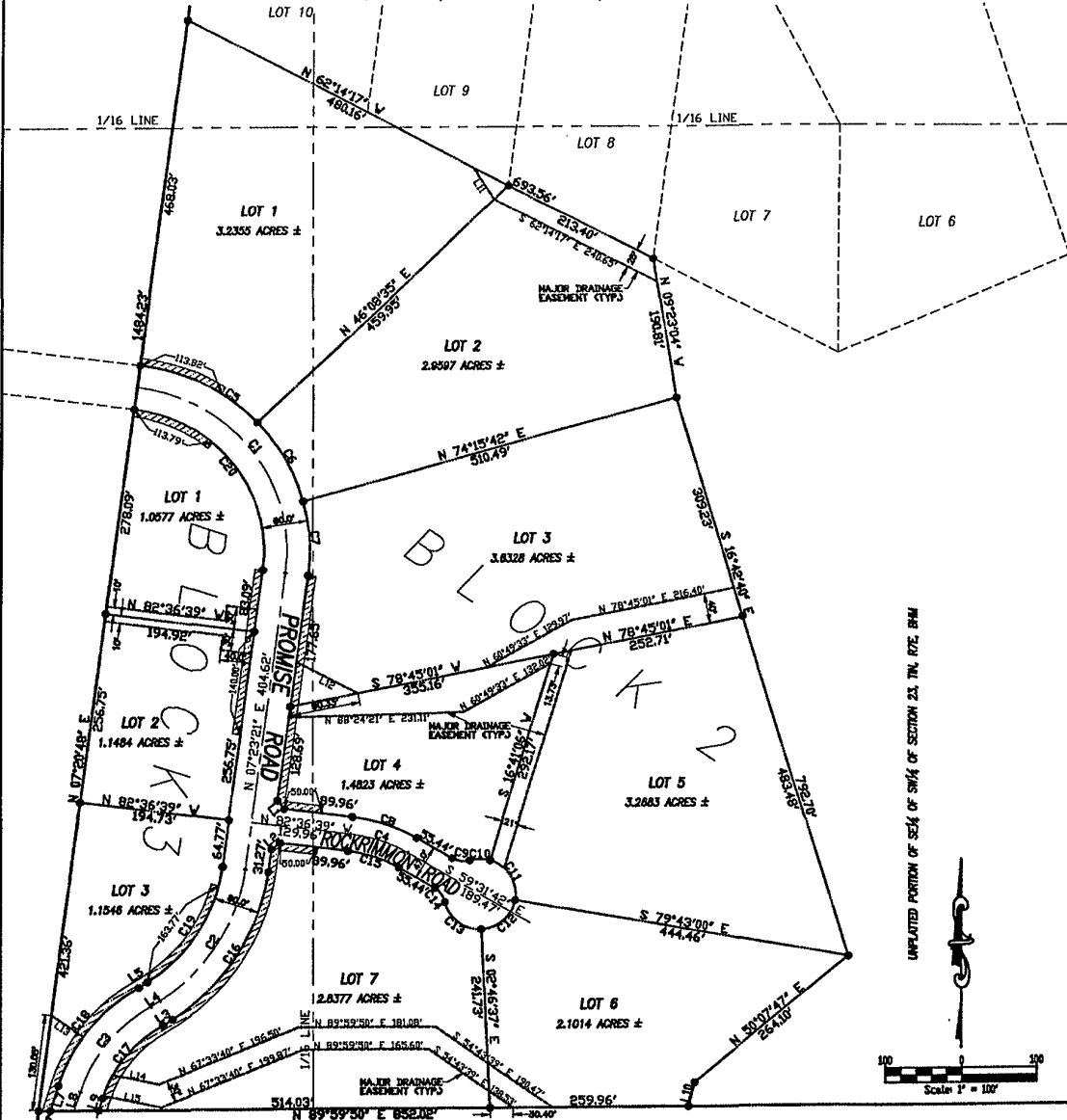


INCLUDING LOTS 1 THRU 7, BLOCK 2,  
 LOTS 1 THRU 3, BLOCK 3 AND DEDICATED STREETS

THE UNPLATTED PORTION OF SW<sup>1</sup>/<sub>4</sub> OF SW<sup>1</sup>/<sub>4</sub> & A PORTION OF  
 SE<sup>1</sup>/<sub>4</sub> OF SW<sup>1</sup>/<sub>4</sub>, NW<sup>1</sup>/<sub>4</sub> OF SW<sup>1</sup>/<sub>4</sub>, & NE<sup>1</sup>/<sub>4</sub> OF SW<sup>1</sup>/<sub>4</sub>  
 SECTION 23, T1N, R7E, BHM  
 RAPID CITY, PENNINGTON COUNTY, SOUTH DAKOTA



UNPLATTED PORTION OF SE<sup>1</sup>/<sub>4</sub> OF SW<sup>1</sup>/<sub>4</sub> OF SECTION 23, T1N, R7E, BHM

