

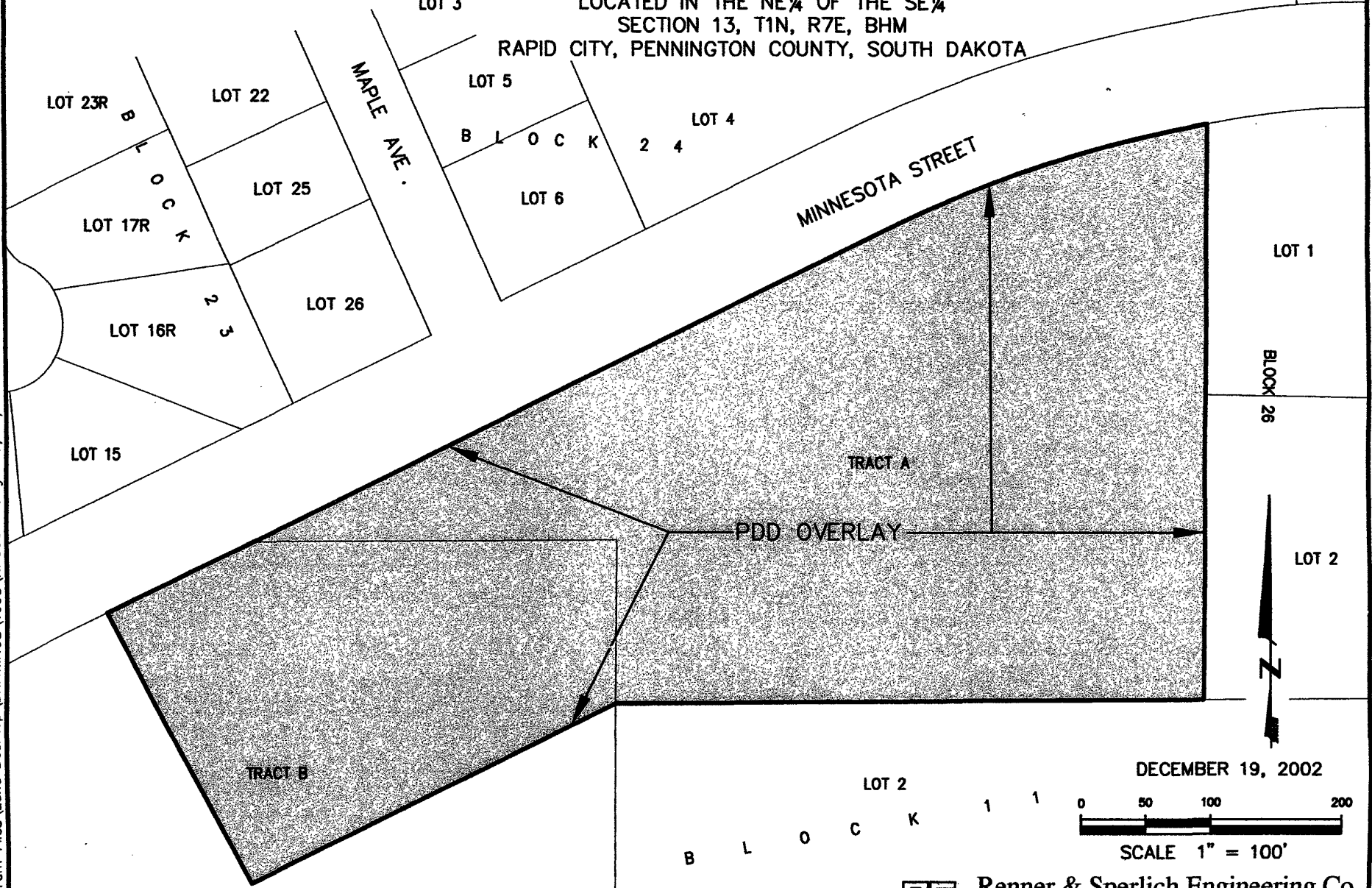
03PD001

EXHIBIT OF A PORTION OF TRACT A OF ROBBINSDALE ADDITION NO. 10 AND A PORTION OF TRACT B OF ROBBINSDALE ADDITION NO. 10

LOT 14

LOCATED IN THE NE 1/4 OF THE SE 1/4
SECTION 13, T1N, R7E, BHM

RAPID CITY, PENNINGTON COUNTY, SOUTH DAKOTA



C:\Program Files\Land Desktop\DRAWINGS\1698\RASCAMP.dwg 09/04/02 07:31:07 AM MDT



Renner & Sperlich Engineering Co.

616 Sixth St. * Rapid City, SD 57701 * 605/342-1191
FAX: 605/342-1405 * E-MAIL: RSEC@RAPIDNET.COM