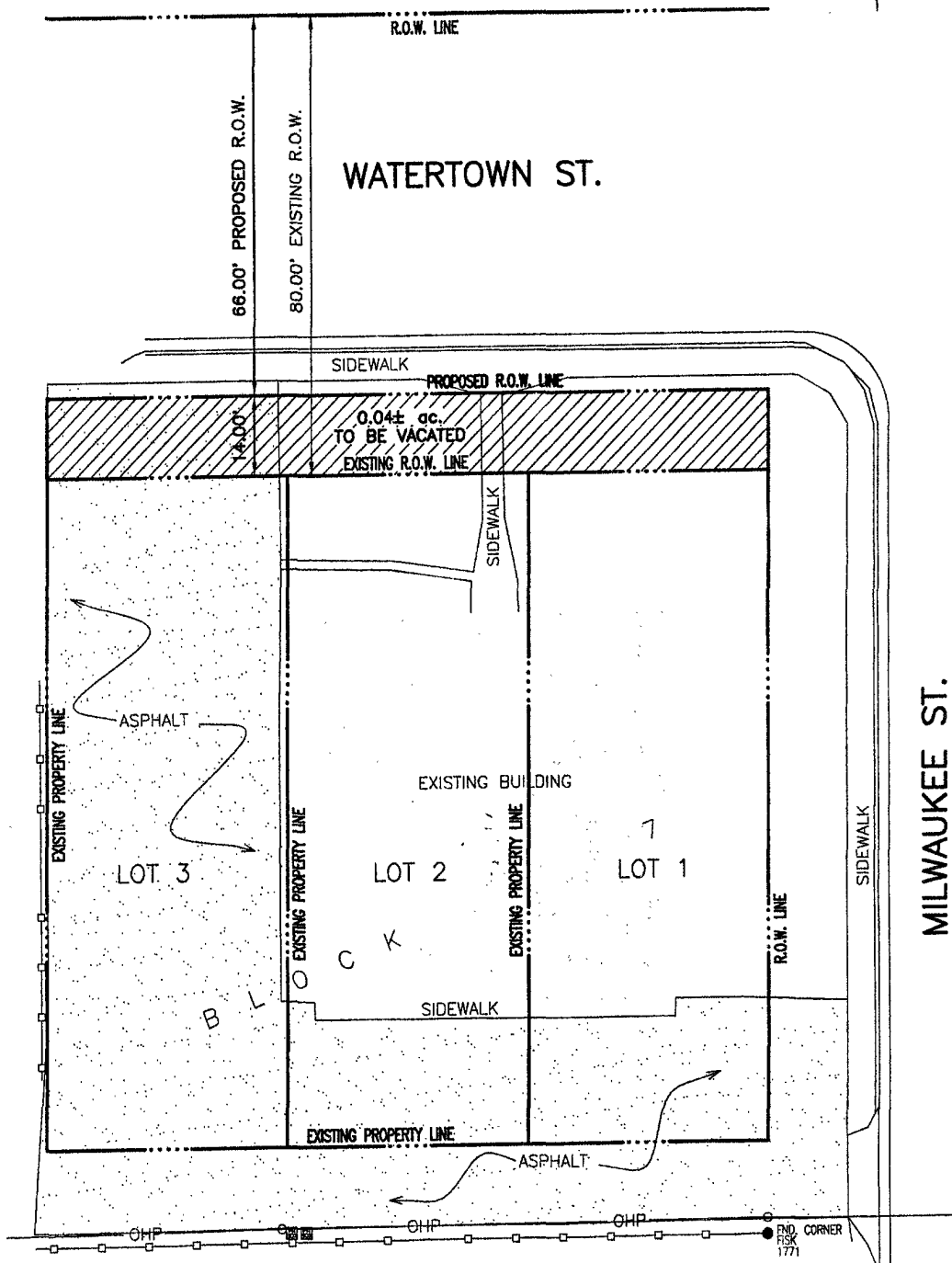
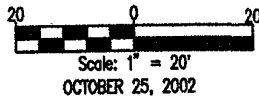


EXHIBIT A RIGHT OF WAY TO BE VACATED

LOTS 1-3, BLOCK 7
SCHNASSE SUBDIVISION
SECTION 31, T2N, R8E, BHM
RAPID CITY, PENNINGTON COUNTY, SOUTH DAKOTA.

02VR006



PREPARED BY:



D.D.I.
DREAM DESIGN INTERNATIONAL, INC.
PROFESSIONAL CIVIL & STRUCTURAL ENGINEERING CONSULTANTS
3202 MAIN ST., SUITE D, RAPID CITY, SD 57702
PH. 605-348-0630 FAX. 605-348-0645 EMAIL: engineers@dreamdesigninc.com