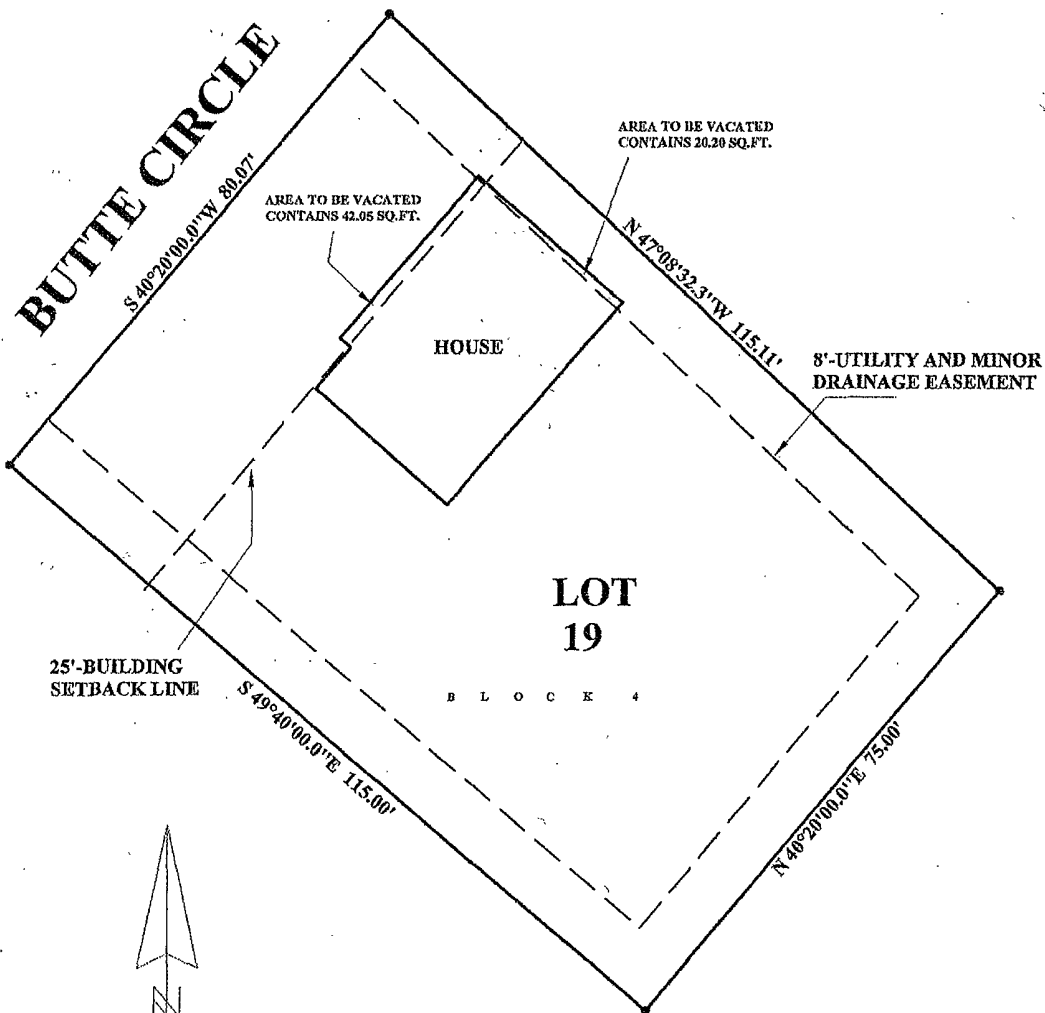


EXHIBIT "A"

VACATION OF 25' FRONT BUILDING SETBACK AND 8' UTILITY AND MINOR DRAINAGE EASEMENT

LOT 19 OF BLOCK 4 OF COUNTY HEIGHTS SUBDIVISION,
PENNINGTON COUNTY, SOUTH DAKOTA



SEPTEMBER 18, 2002

SCALE 1"=20'