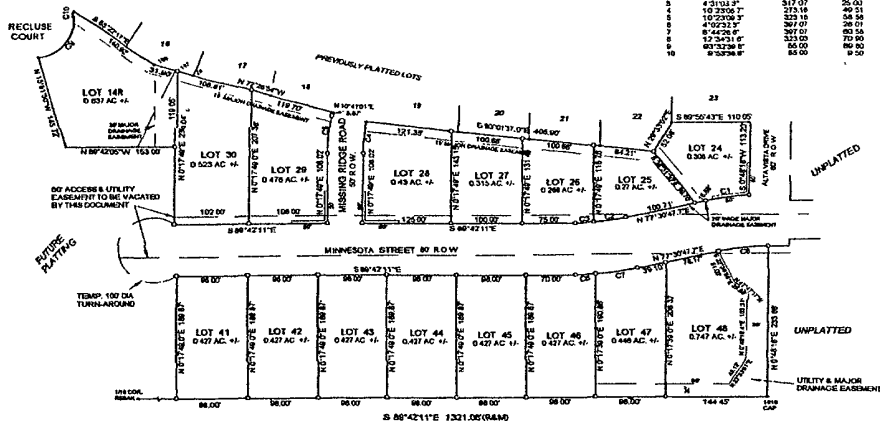
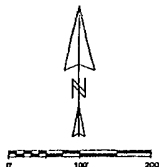


MINNESOTA RIDGE SUBDIVISION

PLAT OF LOT 14R, LOTS 24 THRU 30 AND LOTS 41 THRU 48
(FORMERLY A PORTION OF TRACT C OF ROBBINSDALE ADDITION NO. 10)
LOCATED IN SW1/4 OF SECTION 13, T1N, R7E, B.H.M.
RAPID CITY, PENNINGTON COUNTY, SOUTH DAKOTA



LEGEND

Found Survey Monument