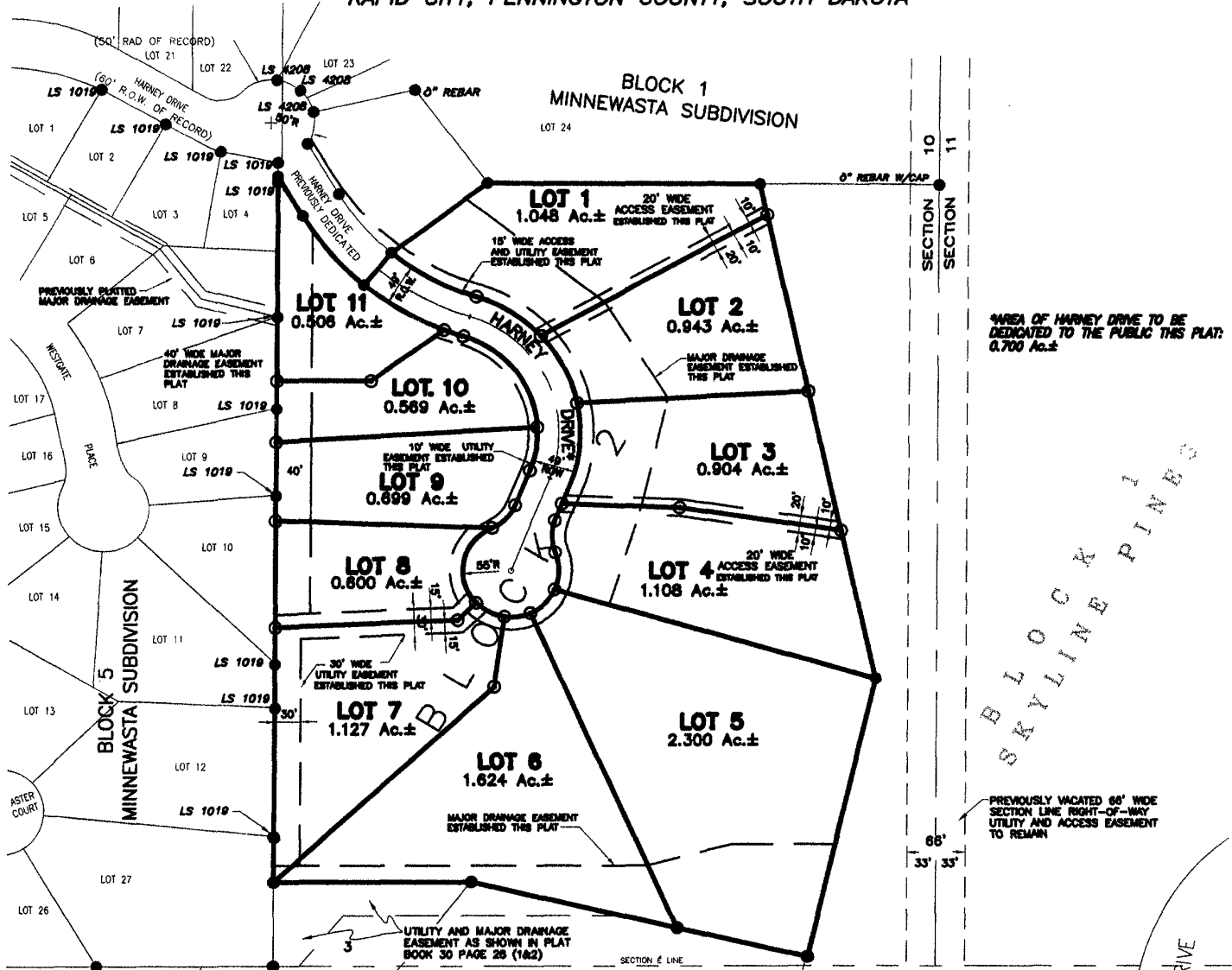


LOTS 1 THROUGH 11 OF BLOCK 2 SKYVIEW NORTH SUBDIVISION

(FORMERLY A PORTION OF THE UNPLATTED BALANCE OF THE E/2 SE/4 OF SECTION 10, T1N, R7E, BHM)
LOCATED IN THE NE/4 OF THE SE/4 OF SECTION 10, T1N, R7E, BHM
RAPID CITY, PENNINGTON COUNTY, SOUTH DAKOTA



AREA OF HARNEY DRIVE TO BE DEDICATED TO THE PUBLIC THIS PLAT: 0.700 Ac.±

BLOCK & PINES

NOTES:
BUILDINGS ON ANY LOTS HAVING DRIVEWAYS EXCEEDING 15% SLOPE SHALL BE EQUIPPED WITH AN AUTOMATED RESIDENTIAL SPRINKLER SYSTEM SUBJECT TO APPROVAL BY THE RAPID CITY FIRE DEPARTMENT.

MAXIMUM DRIVEWAY SLOPE SHALL NOT EXCEED THE LIMITS ESTABLISHED IN THE RAPID CITY STREET CRITERIA MANUAL WITHOUT WRITTEN APPROVAL OF THE CITY OF RAPID CITY.

SPECIFIC GEOTECHNICAL AND SLOPE STABILITY INFORMATION MUST BE SUBMITTED TO THE CITY OF RAPID CITY FOR REVIEW AND APPROVAL PRIOR TO THE ISSUANCE OF ANY BUILDING PERMITS.



Renner & Sperlich Engineering Co.

616 Sixth St. * Rapid City, SD 57701 * 605/342-1191
FAX: 605/342-1405 * E-MAIL: RSEC@RAPIDNET.COM

JULY 17, 2001
N.T.S.

