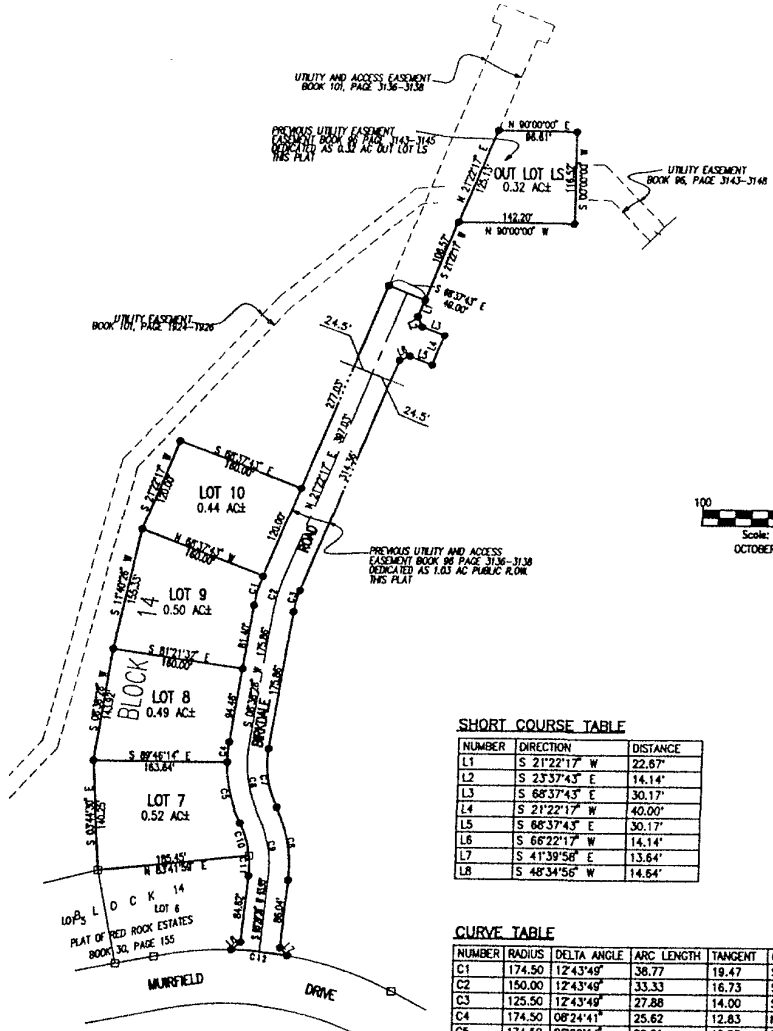


PLAT OF RED ROCK ESTATES

INCLUDING LOTS 7 THRU 10, BLOCK 14 AND
 OUTLOT LS AND DEDICATED STREETS
 THE UNPLATTED PORTION OF NW1/4
 SECTION 29, T1N, R7E, BHM
 RAPID CITY, PENNINGTON COUNTY, SOUTH DAKOTA

LEGEND

- DENOTES SET 5/8" REBAR WITH SURVEY CAP MARKED "RLS 3977"
 - DENOTES FOUND SURVEY MONUMENT
- BASIS OF BEARING: PER PREVIOUSLY RECORDED PLAT(S).



SHORT COURSE TABLE

NUMBER	DIRECTION	DISTANCE
L1	S 21°22'17" W	22.87'
L2	S 23°37'43" E	14.14'
L3	S 68°37'43" E	30.17'
L4	S 21°22'17" W	40.00'
L5	S 68°37'43" E	30.17'
L6	S 68°22'17" W	14.14'
L7	S 41°38'58" E	13.64'
L8	S 48°34'58" W	14.64'

CURVE TABLE

NUMBER	RADIUS	DELTA ANGLE	ARC LENGTH	TANGENT	CHORD DIRECTION	CHORD LENGTH
C1	174.50	12°43'49"	38.77	19.47	S 15°00'22" W	38.69
C2	150.00	12°43'49"	33.33	16.73	S 15°00'22" W	33.26
C3	125.50	12°43'49"	27.88	14.00	S 15°00'22" W	27.83
C4	174.50	08°24'41"	25.62	12.83	N 04°28'07" E	25.59
C5	174.50	28°20'14"	80.21	40.83	S 12°58'21" E	79.51
C6	150.00	34°44'55"	90.97	46.93	S 08°44'00" E	89.58
C7	125.50	34°44'55"	76.11	39.27	S 08°44'00" E	74.95
C8	174.50	31°36'04"	86.24	49.38	S 10°18'26" E	95.03
C9	150.00	31°36'04"	82.73	42.45	S 10°18'26" E	81.89
C10	125.50	19°48'27"	43.36	21.91	N 16°12'14" W	43.17
C11	125.50	11°47'37"	25.83	12.96	S 00°24'12" E	25.79
C12	438.00	17°51'29"	136.52	68.62	S 71°03'36" E	135.96