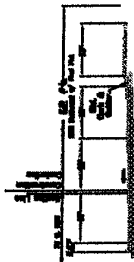
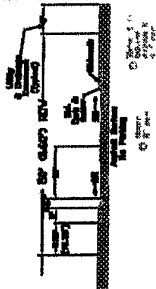




NO.	DESCRIPTION	DATE
1
2
3
4
5
6
7
8
9
10
11
12
13
14
15
16
17
18
19
20



C. SCALE 1/4" = 10' HORIZ.
SCALE 1/4" = 20' VERT.

NOTES REGARDING THIS STREET

PLANS SHOWN UTILITIES CITY WILL
RECONSTRUCT WHEN 5th STREET
PROJECT IS FINALLY BUILT.

NOTES REGARDING UTILITIES
CITY AND OTHER AGENCIES SHALL
BE CONTACTED FOR THE LOCATION OF
EXISTING UTILITIES AND TO
BE COORDINATED WITH ALL OTHER PROJECTS.

LARRY S. GARD COMPANY, INC.
1415 GARDEN CITY AVENUE
GARDEN CITY, MO 64503

