


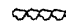


LANDSCAPE KEY:

-  CONIFER TREE -  
IE. BLACK HILLS SPRUCE
-  SHADE TREE -  
IE. GREEN ASH
-  SMALL ORNAMENTAL TREE OR SHRUB -  
IE. ASPEN, JUNIPER, LILAC
-  RETAINING WALL, TYPICAL

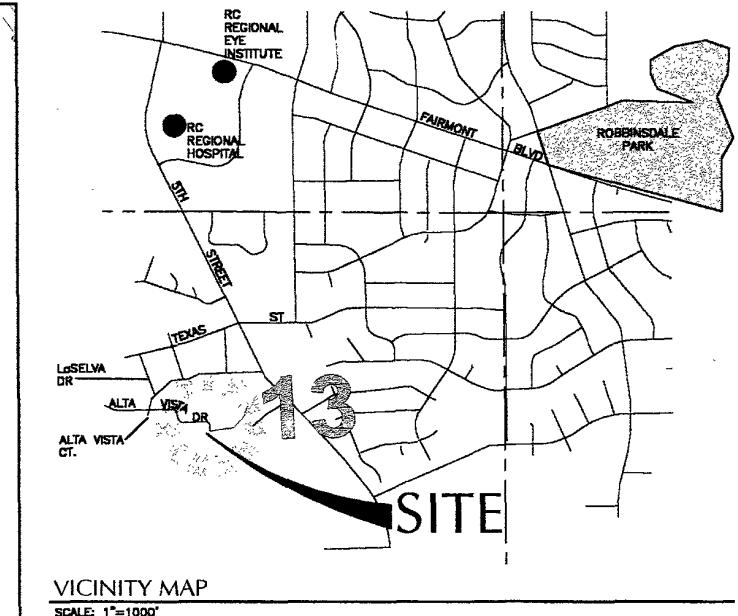
02PD064

NOTE:

LANDSCAPE ITEMS ARE CONCEPTUAL ONLY. FINAL SPECIES AND LOCATIONS ARE SUBJECT TO CHANGE.

NOTE:

ADJOINING PROPERTY OWNERS (TRACT A BLOCK 27 OF ROBBINSDALE NO. 10) HAVE BEEN INFORMED OF OPTION FOR REDUCED REAR LOT SETBACK AND SUPPORT SAID GEOMETRY



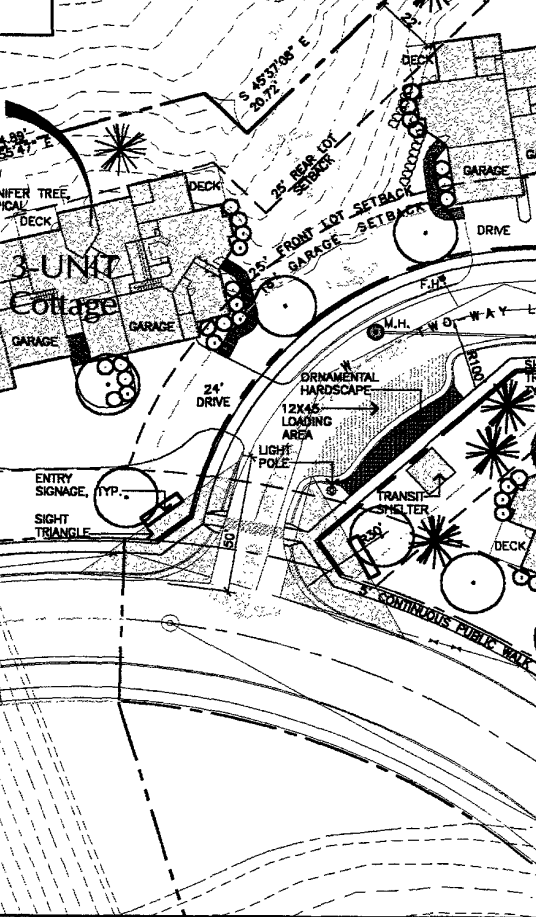
VICINITY MAP  
SCALE: 1"=1000'

GENERAL NOTES:

- Site consists of 4.30 total acres
- Plan includes twenty-three or twenty-four Duplex / Triplex cottages
- Density of approximately .18 acres per unit
- Ninety-six "off-street" lighted driveway parking spaces; two in driveway, two in garage (per unit)
- Nicely landscaped setting with buffering plantings
- One individual access point to street
- 25' Front and Back Setback
- 8' Side-lot Setback minimum for single story structure
- Emergency vehicle access to cul-de-sac / 90' diameter
- Walkout basement / Lower floor on most units
- Accessibility to all areas of site via walkways
- Building heights not to exceed 20' from finished floor
- Drainage channels indicated by gray arrows
- No parking allowed on streets, indicated by signages
- Front of units to be sodded turf / Back of units to be seeded turf
- All plantings, except seeded areas, to be irrigated with permanent underground system

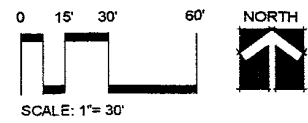
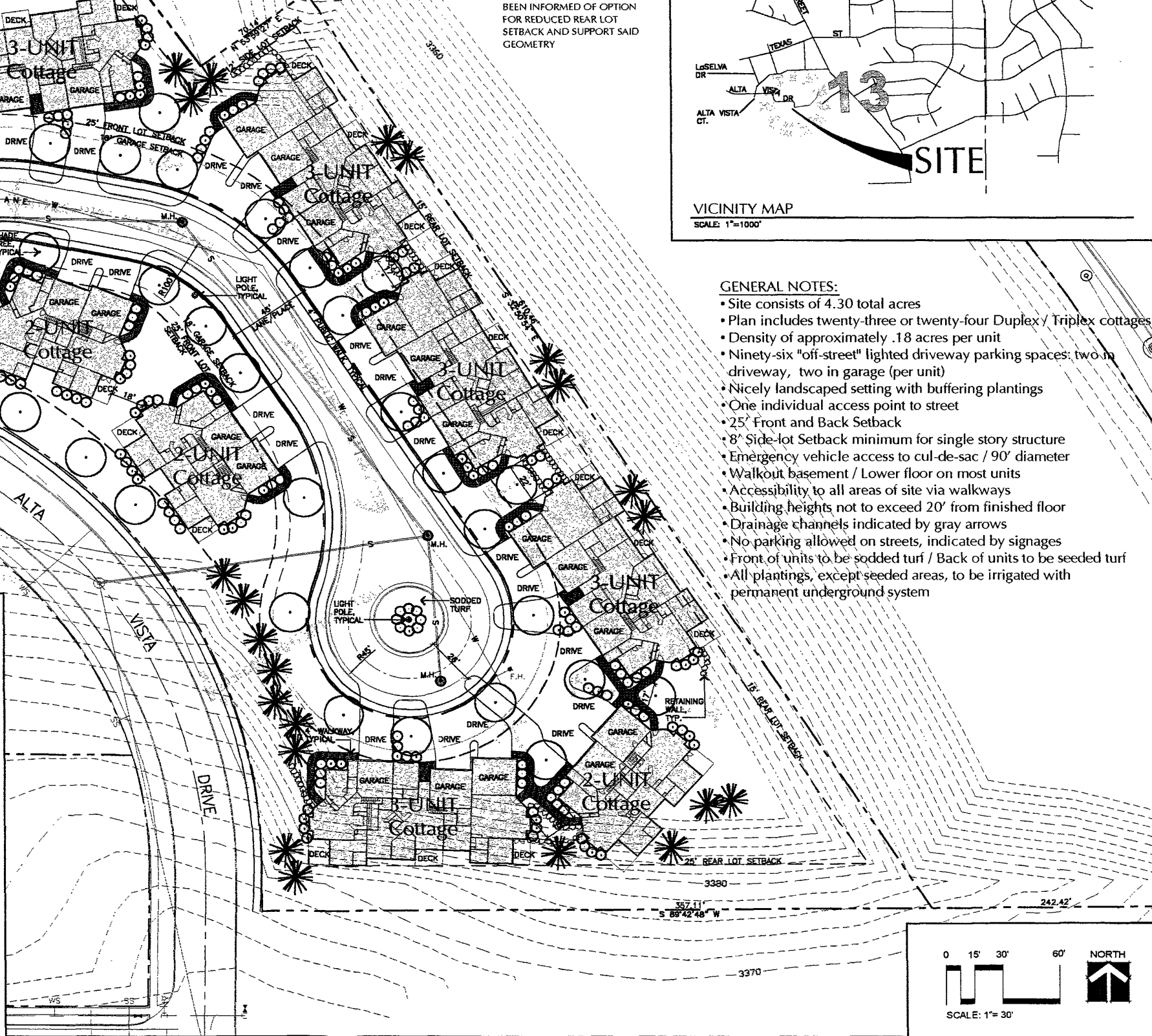
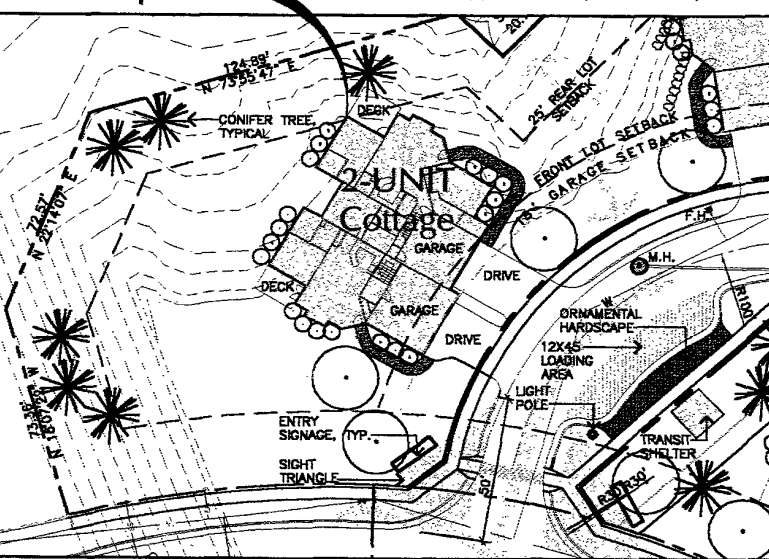
G:\DRAW West Hills Village CDs Initial Design Design-1.dwg, 36x24, 08/30/02 03:43:31 PM, A:\netre, EPSON Stylus COLOR I520.pc3, Ledger 11 x 17 in, 1:2.121

3-Unit Cottage Option



2-Unit Cottage Option

Twenty-three units: Density of approximately .19 acres per unit



**WYSS Associates, Inc.**  
 Landscape Architecture  
 Golf Course Architecture  
 Parks & Recreation Design

728 Sixth Street - Rapid City, South Dakota 57701-3870  
 Ph. 605.348.2288 Fax 605.348.8506  
 email: info@wyssassociates.com

Project Name  
**West Hills Village**

Rapid City, South Dakota

Sheet Title  
**Preliminary Development Plan**

DESIGNED BY:	EAH	
DRAWN BY:	AKW	
APPROVED BY:	PHW	
PROJECT NO.:	01503	
DATE:	August 31, 2002	
NO.	REVISION	DATE
Sheet Number	<b>1</b>	
	of 1	

Ownership of Instruments of Service: All reports, plans, specifications, computer files, field data, notes and instruments prepared by the design professional as instruments of service shall remain the property of the design professional. All common law, statutory and other reserved rights including the copyright therein.