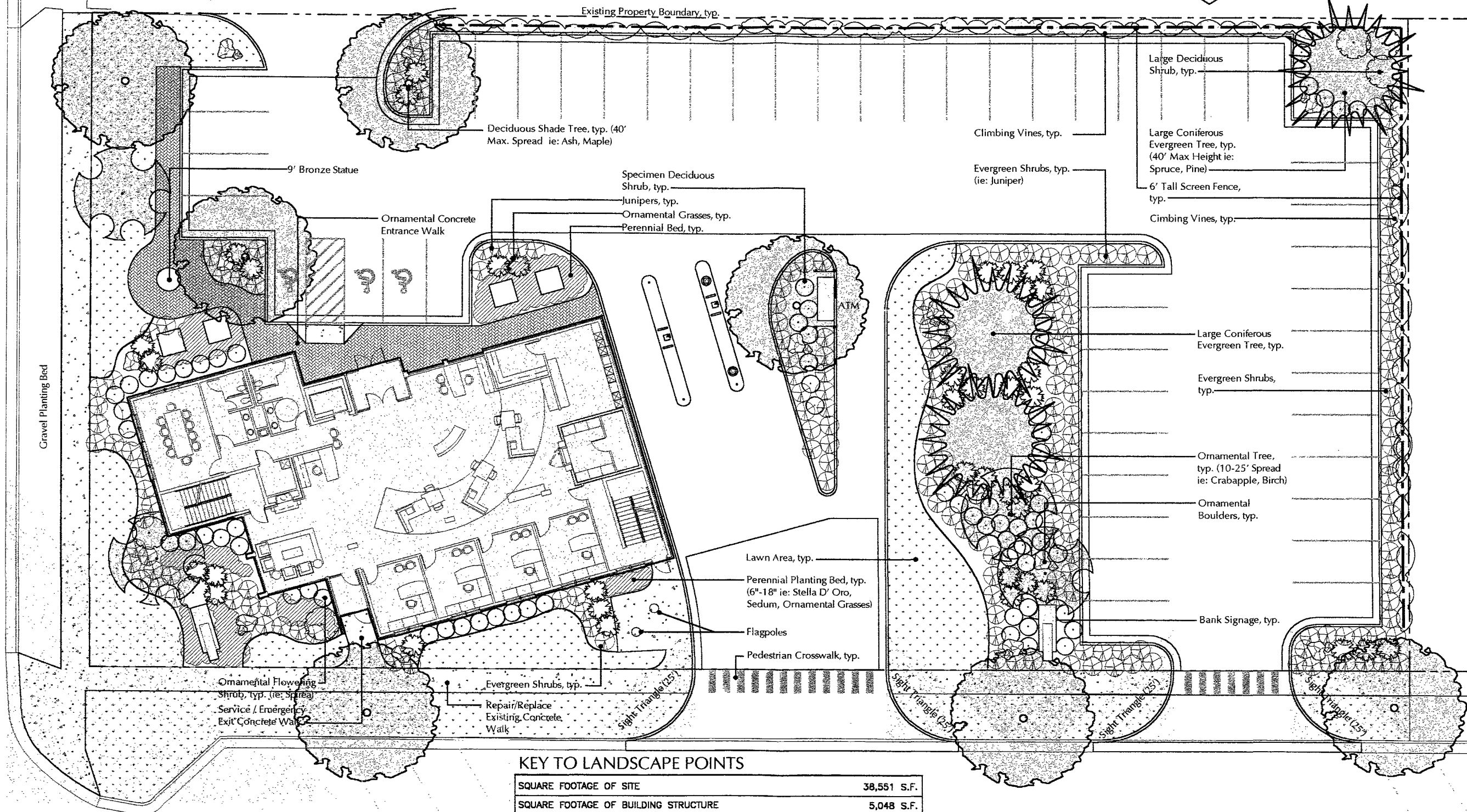


G:\DRAW Security First Bank 02502 Concept Plans Landscape Plan-2.dwg, 2-4x36 Sheet, 09/16/02 08:51:33 AM, A:\file\_EPCSON Stylus COLOR I520.pcs, Ledger II x 17 in, 12.16.089



**KEY TO LANDSCAPE POINTS**

SQUARE FOOTAGE OF SITE	38,551 S.F.	
SQUARE FOOTAGE OF BUILDING STRUCTURE	5,048 S.F.	
LANDSCAPE POINTS REQUIRED	33,503 S.F.	
<hr/>		
SODDED AREAS (SQUARE YARD)	353 S.Y. ● 10 PTS / S.Y.	3,537 PTS.
GROUND COVER (SQUARE YARD)	68 S.Y. ● 100 PTS. / S.Y.	6,800 PTS.
SHRUBS	230 ● 200 PTS EA.	46,000 PTS.
CONIFEROUS TREES (EVERGREEN)	3 ● 2,000 PTS. EA.	6,000 PTS.
DECIDUOUS TREES (SHADE)	7 ● 2,000 PTS. EA.	14,000 PTS.
ORNAMENTAL TREES	4 ● 1,000 PTS. EA.	4,000 PTS.
POINTS PROVIDED	80,337 PTS.	

Initial Landscape Plan

**SECURITY FIRST BANK**  
STOCKMENS FINANCIAL CORPORATION  
FIFTH AND QUINCY STREETS  
RAPID CITY, SOUTH DAKOTA

FIFTY THIRTEEN CORPORATION dba  
SAVAGE PALANDRI ARCHITECTS  
ARCHITECTURE & PLANNING  
5013 UNDERWOOD AVENUE  
OMAHA, NE 68132  
PHONE: (402) 551-3400  
FAX: (402) 551-8331  
E-MAIL: office@savagpalandri.com  
www.savagpalandri.com

**Wyss Associates, Inc.**  
Landscape Architecture  
Golf Course Architecture  
Parks & Recreation Design

728 Sixth Street - Rapid City, South Dakota 57701-3670  
Ph. 805.348.2268 Fax 805.348.6508  
email: info@wyssassociates.com

DATE: 13 SEPTEMBER 2002  
PROJECT NUMBER: 0244

COPYRIGHT 2002  
This Document and the information contained may not be reproduced or accepted from without the express written permission of FTY Thirteen Corp. dba Savage Palandri Architects. Unauthorized copying, disclosure or construction use are prohibited by the copyright law.