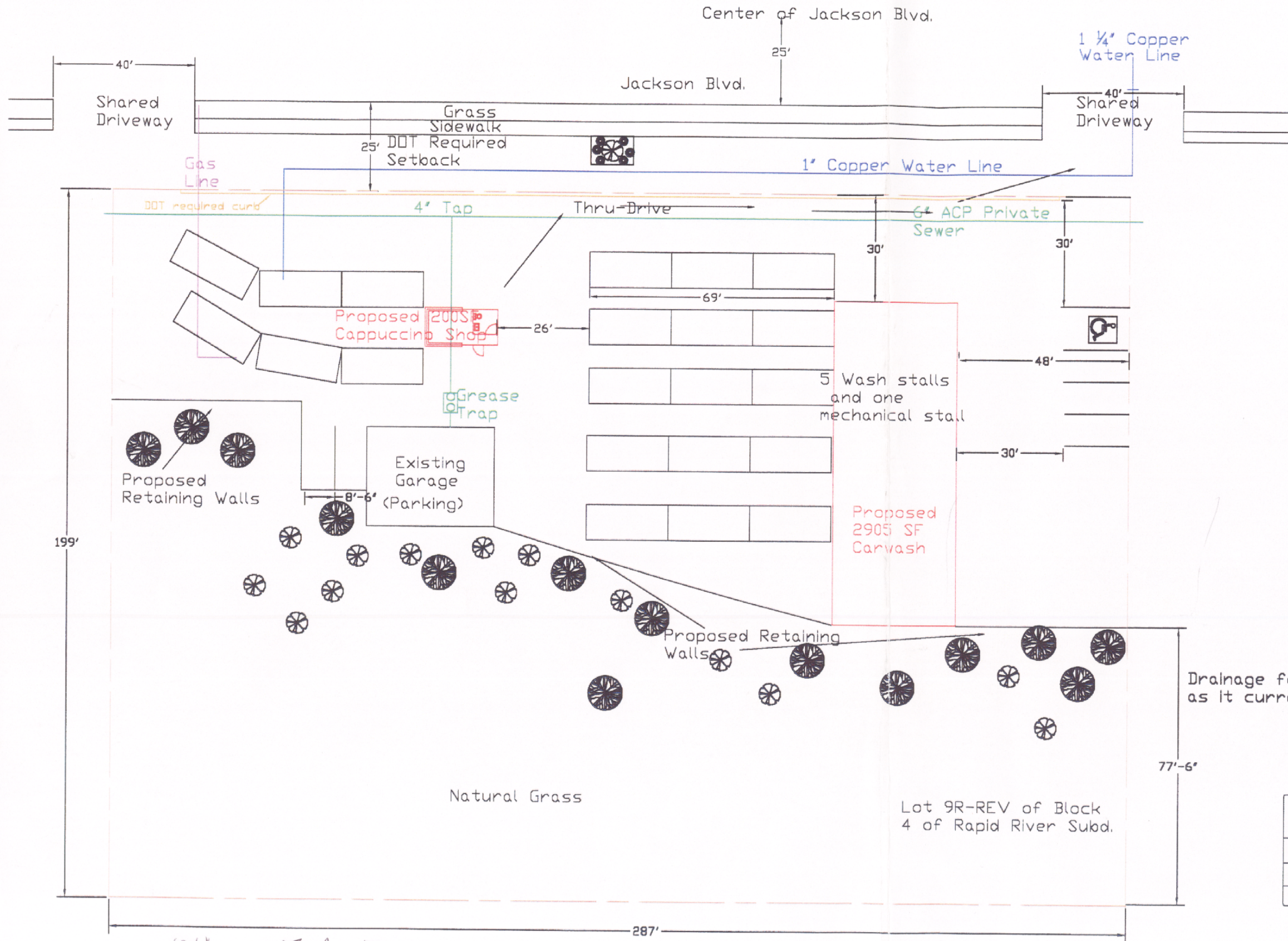


RECEIVED
 JUN 25 2002
 FIRE DEPT.



If a larger water service is required a new line will need to be brought across Jackson Blvd. A new tap can be installed in the private sewer line if required once a size has been determined by the city engineers.

Stacking Lane

Approx. 32,000 pts. required

QTY.	Plant Type	Points
14	Small Trees	7000
14	Medium tree	14,000
Over 24,000 sf of existing grass to remain		26,667

Approx. 47,000 pts. provided

Drainage for the site will run towards Jackson Blvd. as it currently does.

OK NE 2 7-10-02
 MAKE SURE OF FD ACCESS

L & S Metal Building Systems		
Bradsky Carwash		
Drawn By: Danielle J. Wiebers, EIT		
Date: January 29, 2002	Scale: 1"=30'	

RECEIVED
 JUN 2 2002
 Rapid City
 Planning Department