

# PLAT OF TRACT A OF MURPHY RANCH ESTATES SUBDIVISION

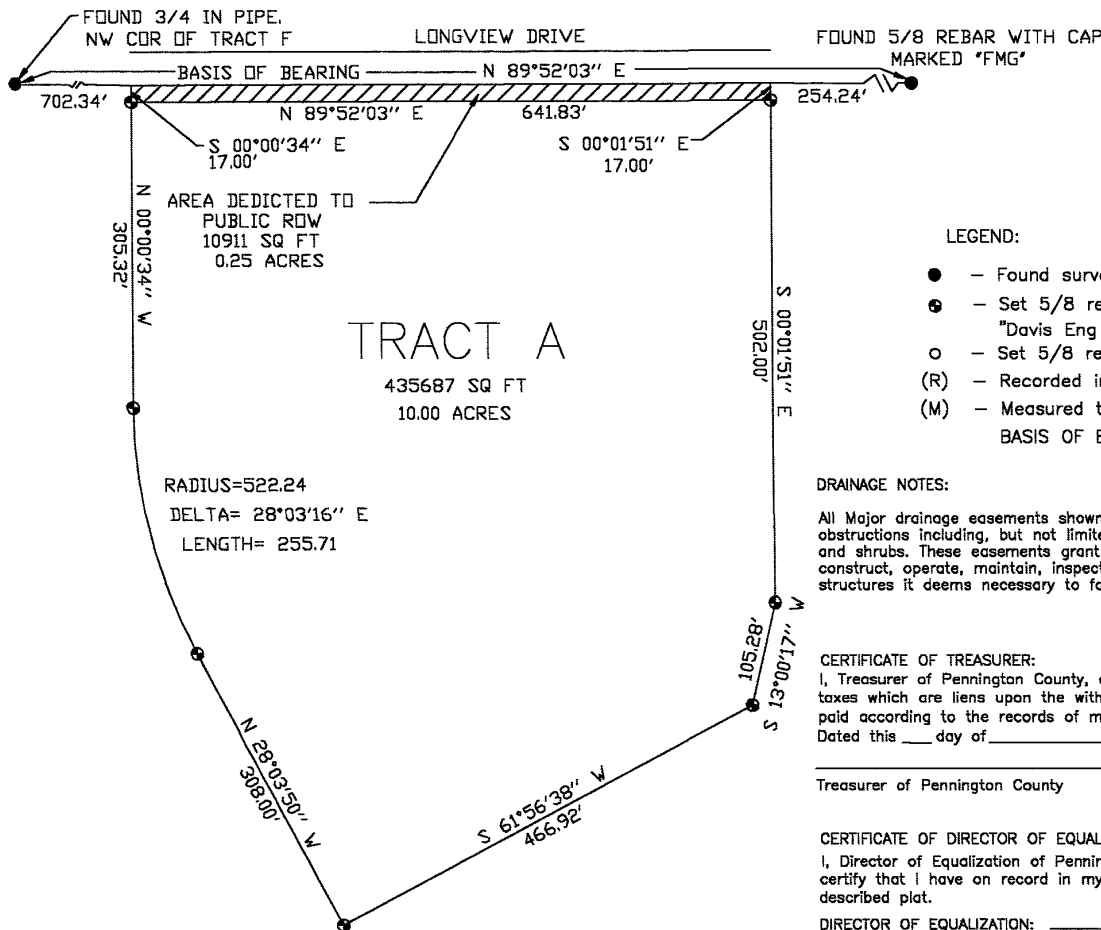
NOTICES MAY BE SENT TO:  
RON DAVIS  
1060 KINGS ROAD  
RAPID CITY, SD 57702

FORMERLY A PORTION OF TRACT F OF THE NW1/4 OF SECTION 14, T1N, R8E, BHM.

ALL LOCATED IN THE NW1/4 OF SECTION 14, T1N, R8E, BHM.



SCALE 1" = 100'  
AUGUST 16, 2002



### LEGEND:

- - Found survey monument as noted
- ◐ - Set 5/8 rebar with survey cap marked "Davis Eng 3095"
- - Set 5/8 rebar with no cap
- (R) - Recorded in previous survey
- (M) - Measured this survey

BASIS OF BEARINGS: As shown hereon

### DRAINAGE NOTES:

All Major drainage easements shown hereon shall be kept free of all obstructions including, but not limited to, buildings, walls, fences, hedges, trees, and shrubs. These easements grant to all public authorities the right to construct, operate, maintain, inspect, and repair such improvements and structures it deems necessary to facilitate drainage from any source.

### CERTIFICATE OF TREASURER:

I, Treasurer of Pennington County, do hereby certify that all taxes which are liens upon the within described lands are fully paid according to the records of my office.  
Dated this \_\_\_ day of \_\_\_\_\_, 2002.

\_\_\_\_\_  
Treasurer of Pennington County

### CERTIFICATE OF DIRECTOR OF EQUALIZATION:

I, Director of Equalization of Pennington County, do hereby certify that I have on record in my office a copy of the within described plat.

DIRECTOR OF EQUALIZATION: \_\_\_\_\_  
Dated this \_\_\_ day of \_\_\_\_\_, 2002.  
APPROVED: \_\_\_\_\_  
DATE: \_\_\_\_\_

BUILDING RESTRICTIONS: Per zoning requirements.

UTILITY & MINOR DRAINAGE EASEMENTS: