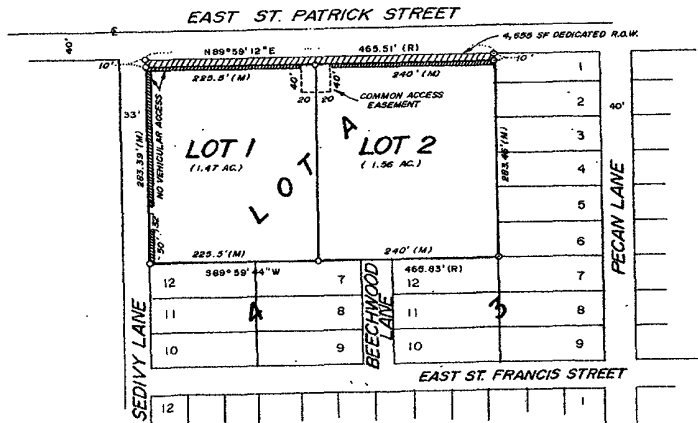


PLAT OF LOTS 1 AND 2 OF LOT A OF BLOCKS 3 AND 4 OF RAPID VALLEY SUBDIVISION AND DEDICATED RIGHT-OF-WAY

FORMERLY ALL OF LOT A OF BLOCKS 3 AND 4 OF RAPID VALLEY SUBDIVISION
 LOCATED IN THE NE 1/4 NE 1/4 OF SECTION 6, T1N, R8E, BHM,
 RAPID CITY, PENNINGTON COUNTY, SOUTH DAKOTA

02PL088



- = Found Rebar with 2199 Cap
- = Found Monument As Shown
- = Set Rebar with 6565 Cap
- (R) = Previously Recorded
- (M) = Measured this Survey

Utility and Minor Drainage Easements - 8' on the interior side of all lot lines.

All major drainage easements shown hereon shall be kept free of all obstructions, including but not limited to buildings, walls, fences, hedges, trees and shrubs. These easements grant to all public authorities the right to construct, operate, maintain, inspect and repair such improvements and structures as it deems expedient to facilitate drainage from any source.

PREPARED BY:
 Fisk Land Surveying & Consulting Engineers, Inc.
 P.O. Box 8154
 Rapid City, SD 57709
 (605) 348-1538
 Project No: 02-08-06
 August 29, 2002