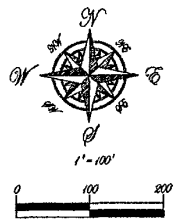
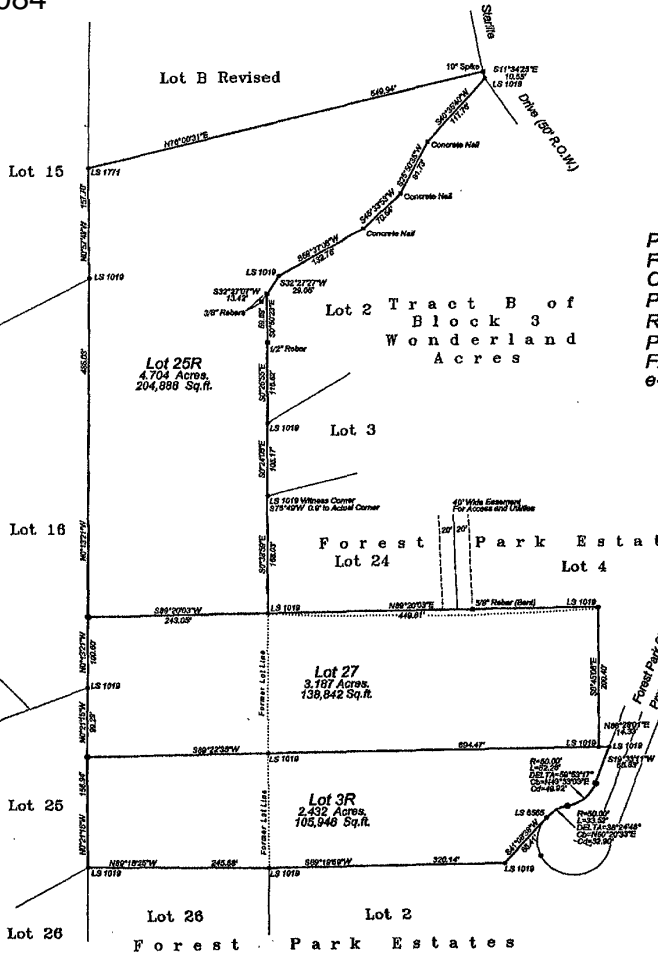


Plat of Lots 3R, 25R and 27 of Forest Park Estates Subdivision

Formerly all of Lot 3 and Lot 25 of Forest Park Estates Subdivision and the North 200' of the South 940' of the West 450' of Tract A, all in Section 16, T1N, R7E, BHM, Rapid City, Pennington County, South Dakota.

02PL084

Block 1 Carriage Hills



Prepared By:
Fisk Land Surveying and Consulting Engineers, Inc.
 P.O. Box 8154
 Rapid City, South Dakota 57709
 Ph# 605-348-1538
 Fx# 341-1112
 e-mail fisks@rapidnet.com