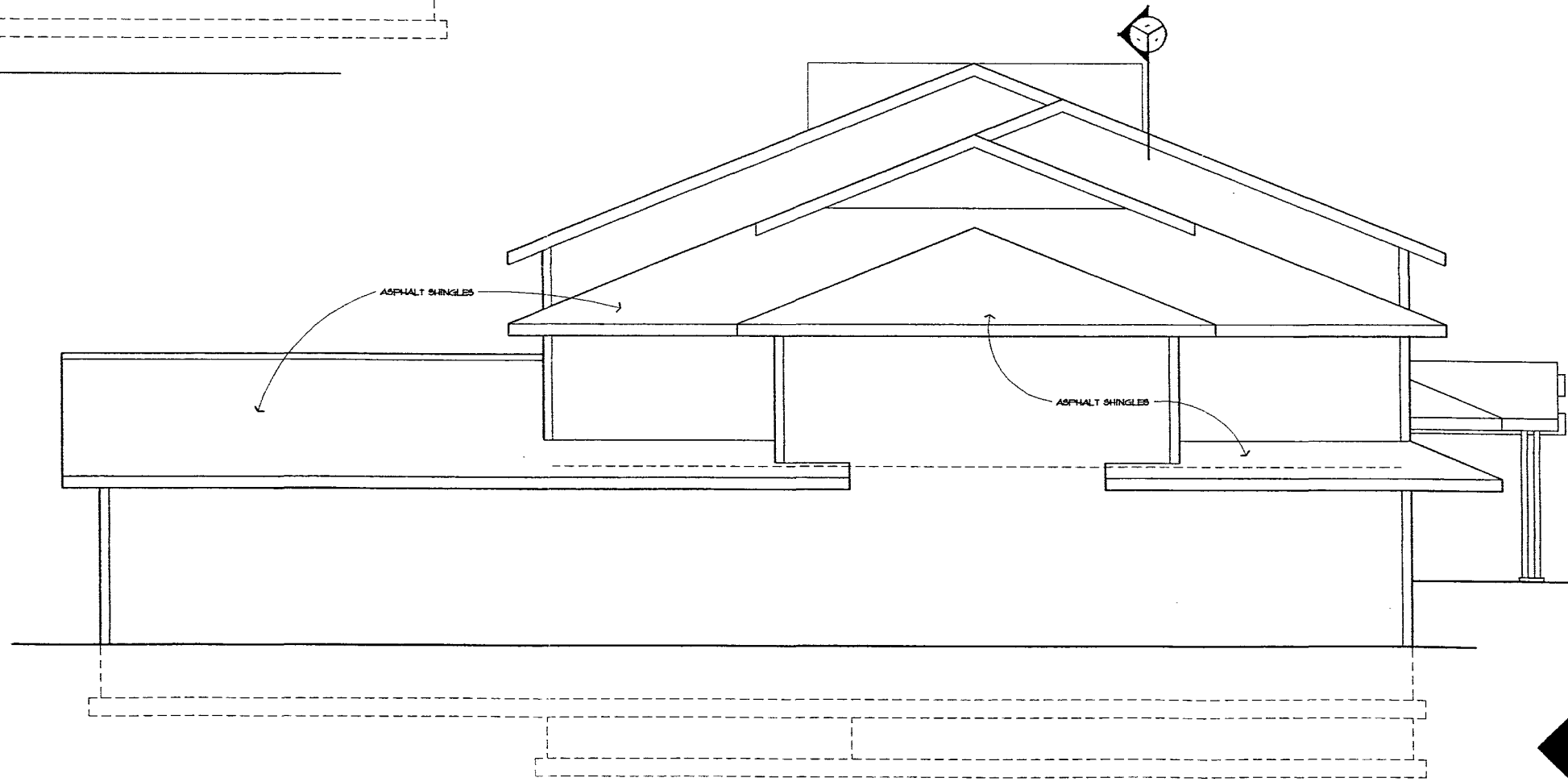




SOUTH ELEVATION
 1/4" = 1'-0"

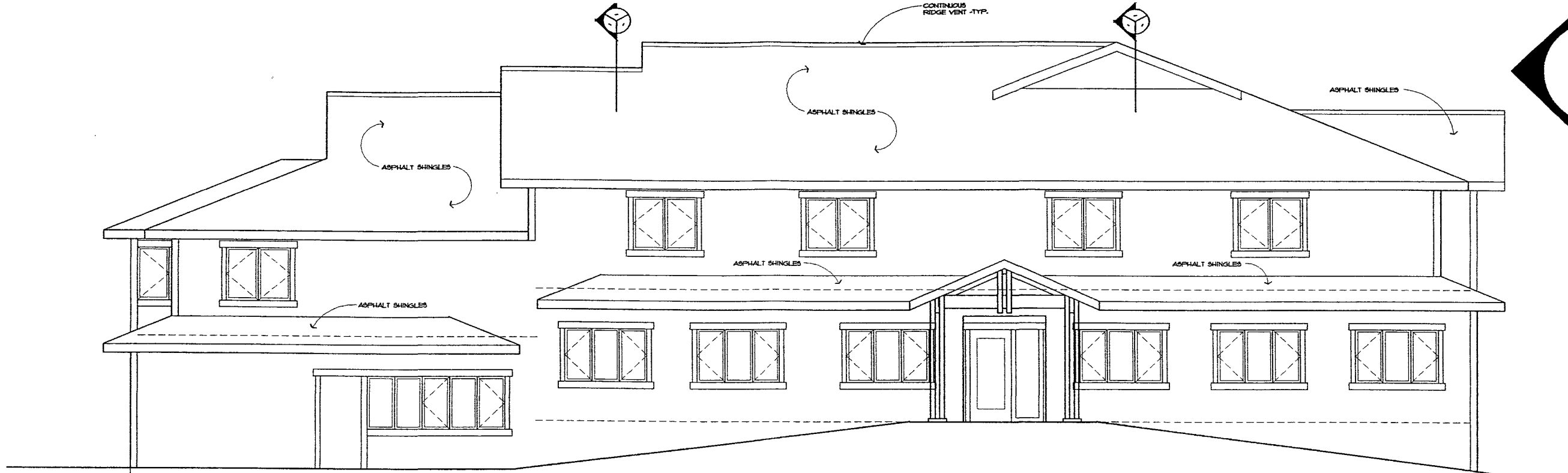



EAST ELEVATION

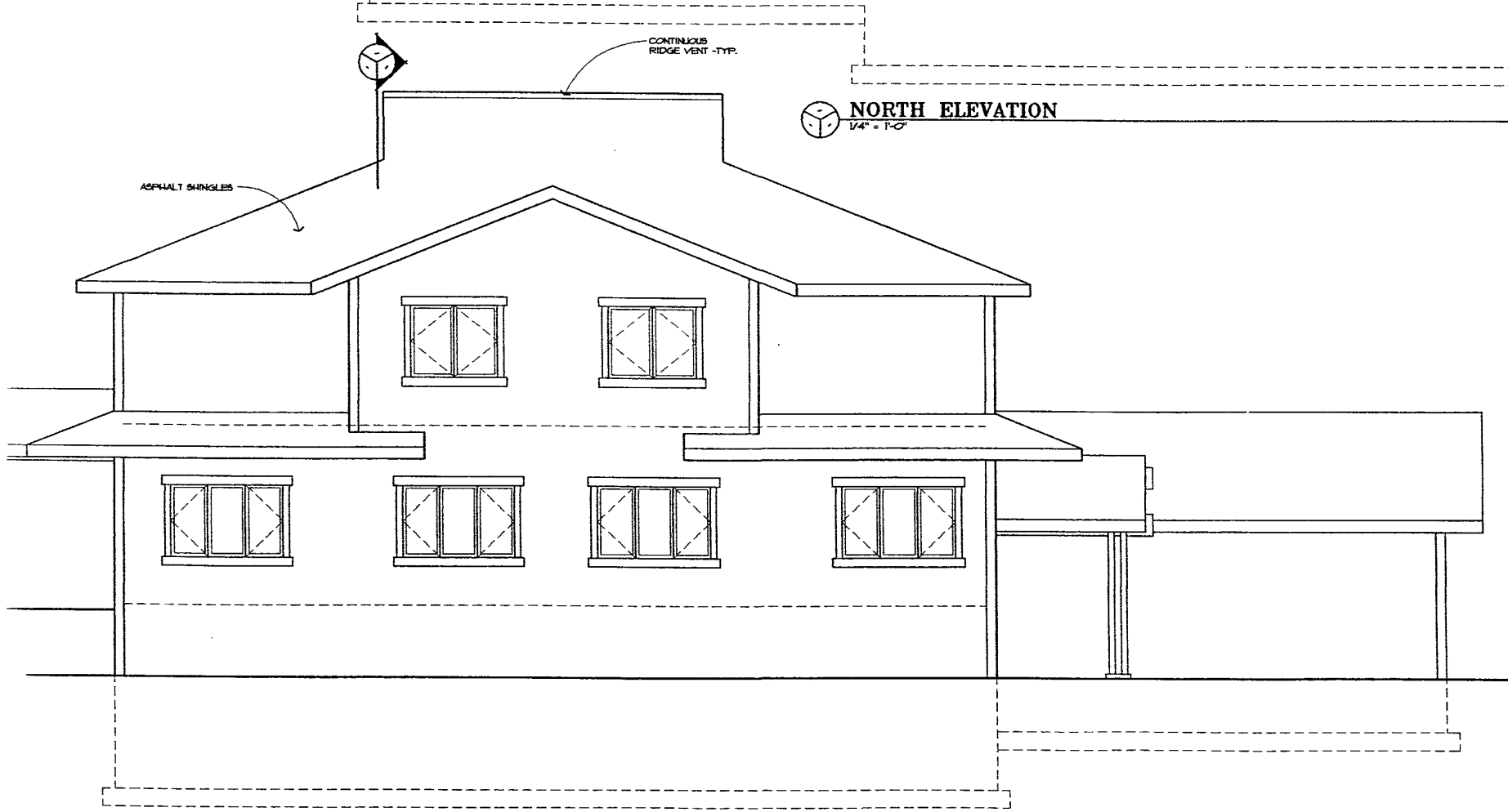
RECEIVED

JUL 26 2002

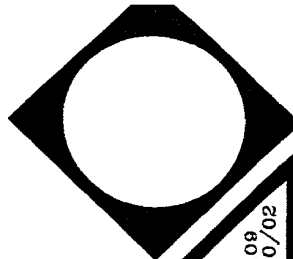
Rapid City
Planning Department



NORTH ELEVATION
1/4" = 1'-0"



WEST ELEVATION
1/4" = 1'-0"



WORKING AGAINST
VIOLENCE, INC. 109
RAPID CITY SOUTH DAKOTA 6/20/02

EXTERIOR
ELEVATIONS

COMMUNITY DEVELOPMENT
1000 East 11th Street, Rapid City, SD 57701
Phone: 605-261-1111
Fax: 605-261-1111

RECEIVED
JUL 26 2002
Rapid City
Planning Department



4.2