

LOTS 1 THRU 15 OF KEPP HEIGHTS SUBDIVISION NO. 4

(FORMERLY LOT 15 OF KEPP HEIGHTS SUBD. #3)

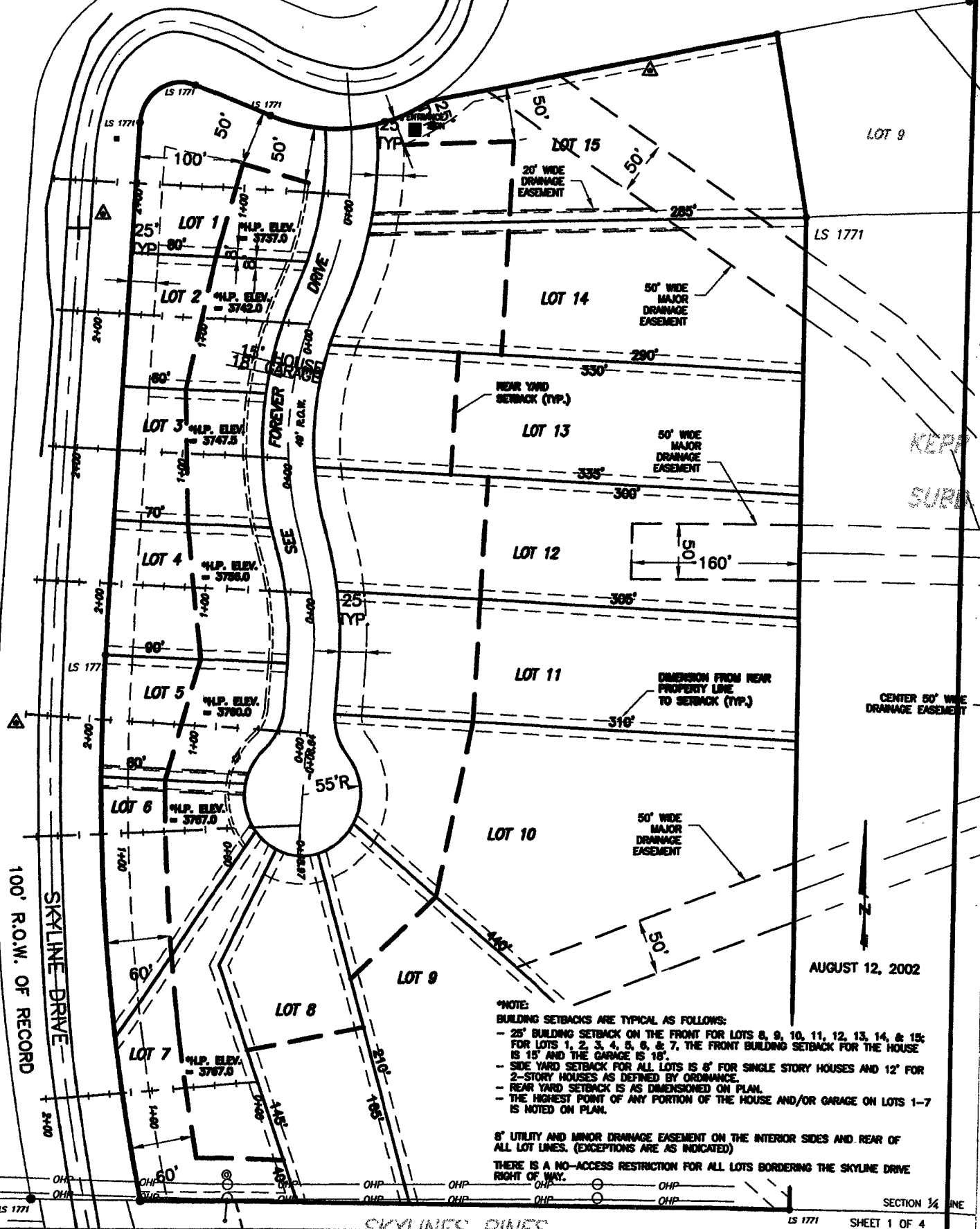
LOCATED IN THE SW 1/4 OF THE NW 1/4 OF SECTION 11, T1N, R7E, BHM
RAPID CITY, PENNINGTON COUNTY, SOUTH DAKOTA

TRACT J

TRACT H

LOT 17

LOT 9



***NOTE:**
BUILDING SETBACKS ARE TYPICAL AS FOLLOWS:
- 25' BUILDING SETBACK ON THE FRONT FOR LOTS 8, 9, 10, 11, 12, 13, 14, & 15;
FOR LOTS 1, 2, 3, 4, 5, 6, & 7, THE FRONT BUILDING SETBACK FOR THE HOUSE IS 15' AND THE GARAGE IS 18'.
- SIDE YARD SETBACK FOR ALL LOTS IS 8' FOR SINGLE STORY HOUSES AND 12' FOR 2-STORY HOUSES AS DEFINED BY ORDINANCE.
- REAR YARD SETBACK IS AS DIMENSIONED ON PLAN.
- THE HIGHEST POINT OF ANY PORTION OF THE HOUSE AND/OR GARAGE ON LOTS 1-7 IS NOTED ON PLAN.

8" UTILITY AND MINOR DRAINAGE EASEMENT ON THE INTERIOR SIDES AND REAR OF ALL LOT LINES. (EXCEPTIONS ARE AS INDICATED)
THERE IS A NO-ACCESS RESTRICTION FOR ALL LOTS BORDERING THE SKYLINE DRIVE RIGHT OF WAY.

AUGUST 12, 2002

SECTION 1/4
SHEET 1 OF 4