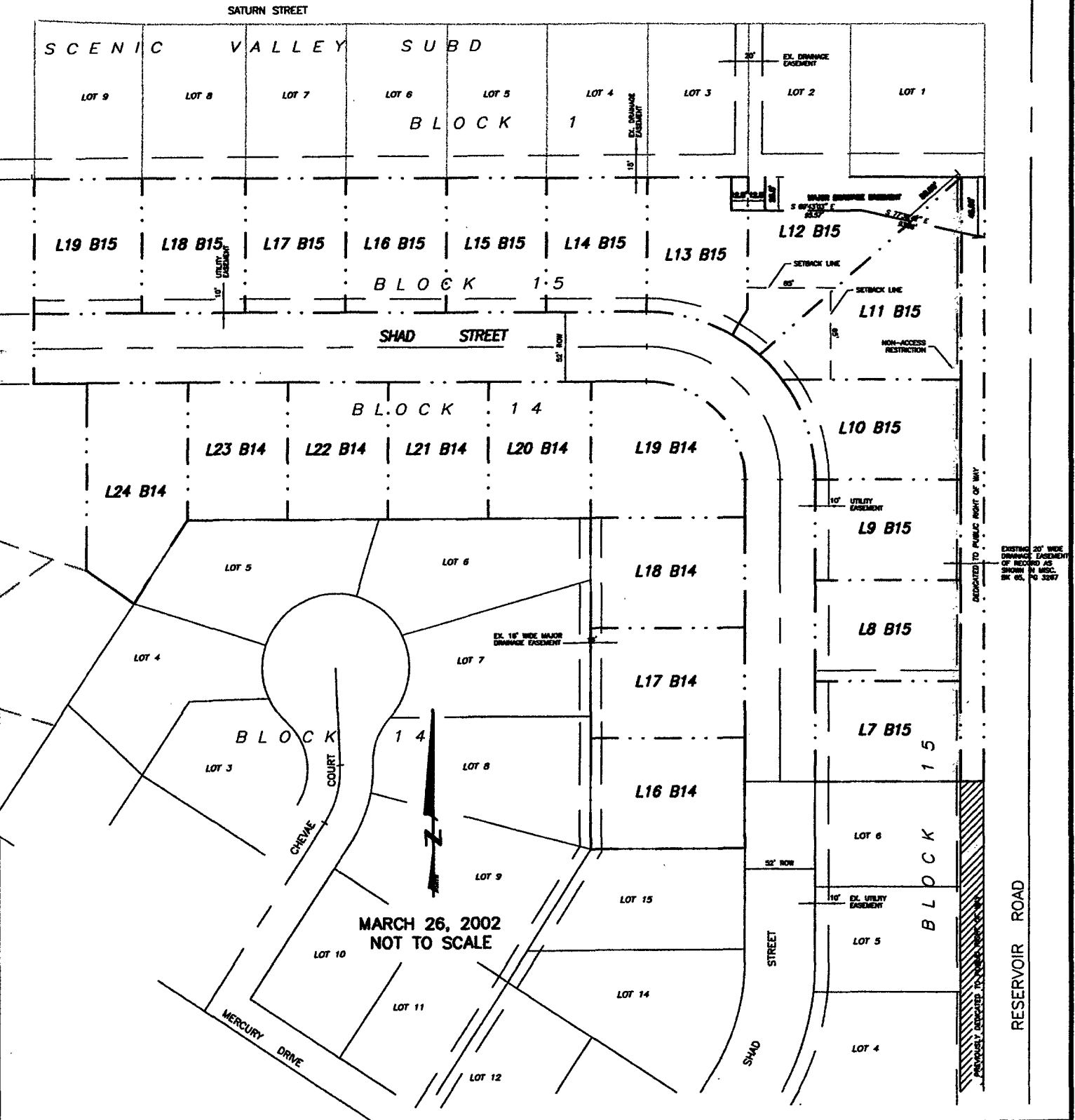


**LOTS 16 THRU 24 OF BLOCK 14
LOTS 7 THRU 19 OF BLOCK 15
(FORMERLY A PORTION OF
TRACT T OF TRAILWOOD VILLAGE)**

**LOCATED IN THE NE¹/₄ OF THE SE¹/₄ OF
SECTION 10, T1N, R8E, BHM
PENNINGTON COUNTY, SOUTH DAKOTA**



EXISTING 20' WIDE DRAINAGE EASEMENT OF RECORD AS SHOWN IN MISC. REC. PL. PG. 3267

DEDICATED TO PUBLIC RIGHT OF WAY

RESERVOIR ROAD