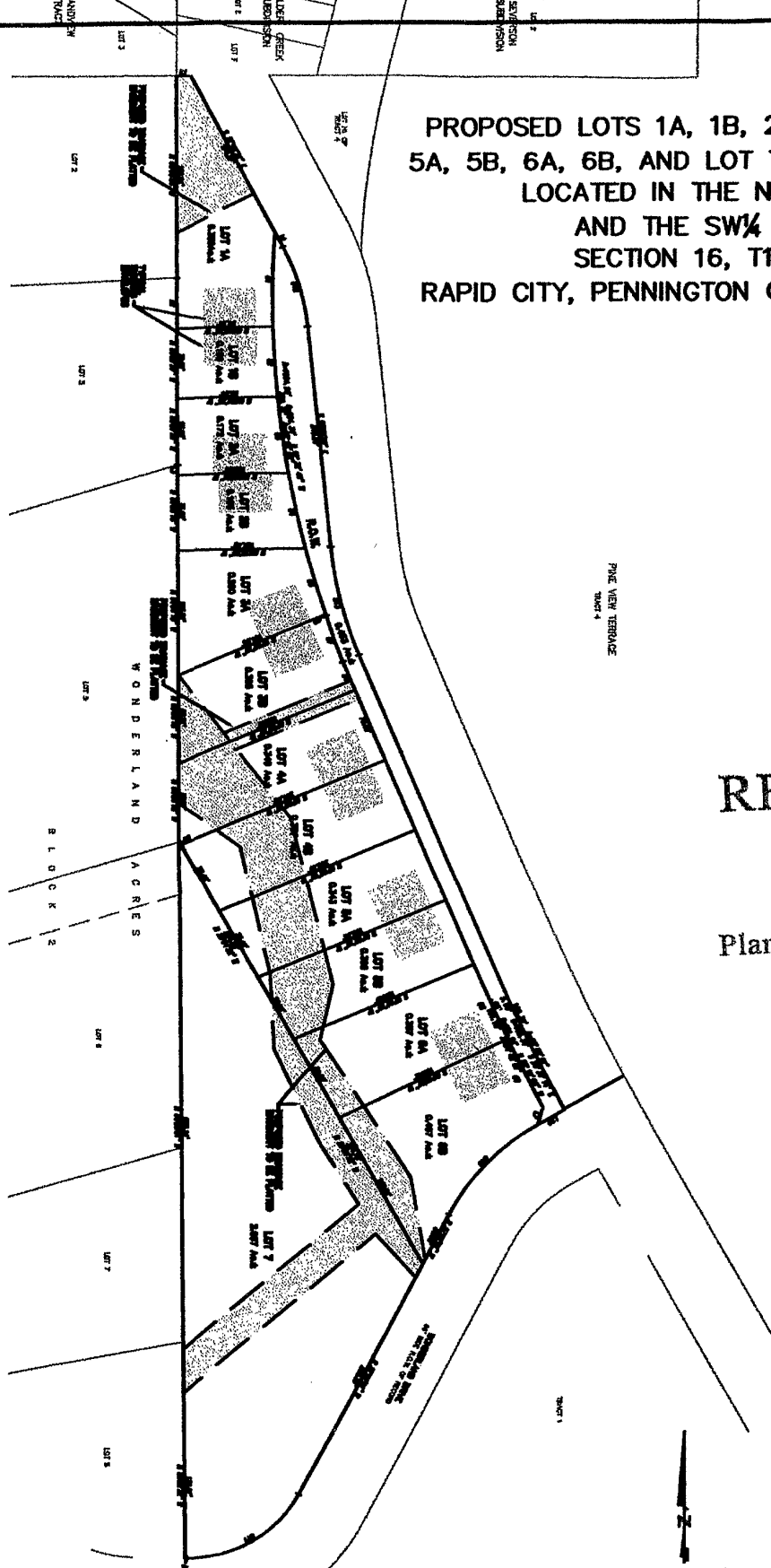


02PD031

PROPOSED LOTS 1A, 1B, 2A, 2B, 3A, 3B, 4A, 4B,
5A, 5B, 6A, 6B, AND LOT 7 OF PINE VIEW TERRACE
LOCATED IN THE NW¼ OF THE SE¼
AND THE SW¼ OF THE SE¼
SECTION 16, T1N, R7E, BHM
RAPID CITY, PENNINGTON COUNTY, SOUTH DAKOTA



RECEIVED

JUL 18 2002

Rapid City
Planning Department