

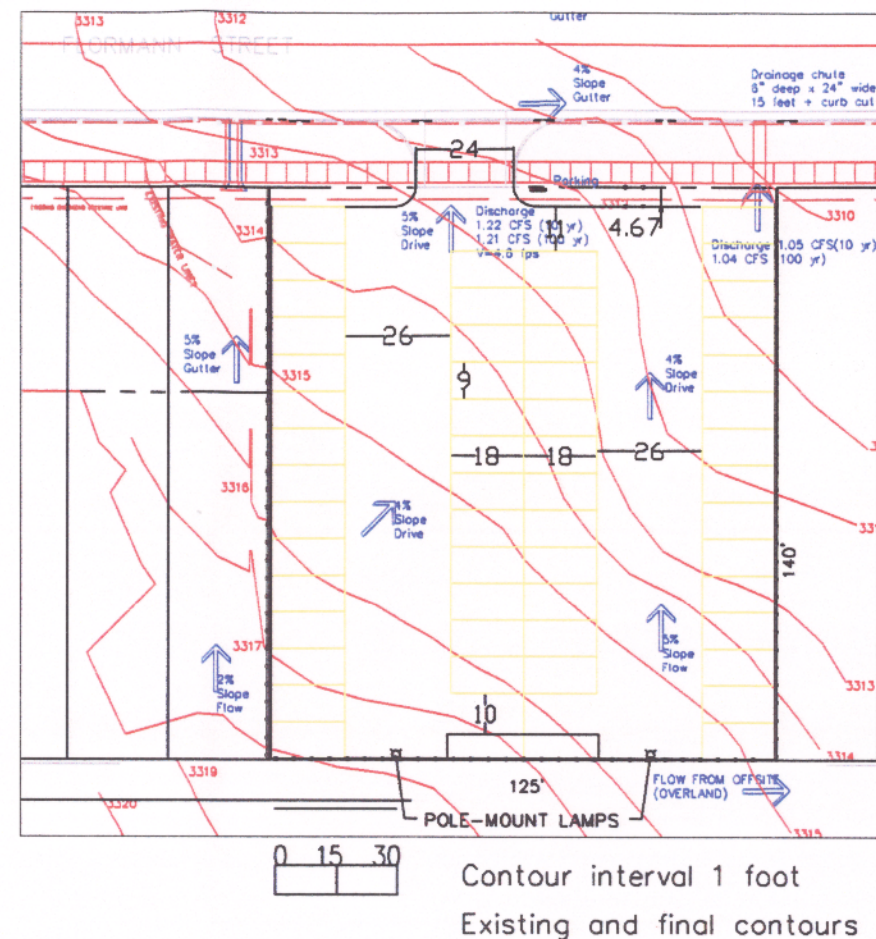
DETAIL 1. CURB CUT AND DRAIN CHUTE

The Flormann Street curb will be cut and a drain chute will be placed in the northeast corner of the parking area, to prevent runoff over the curb and allow for drainage of that portion of the site. The chute will be 6 inches deep by 24 inches wide with a 2-4% slope to the north, and will have concrete floor and vertical sides (min 4" thick). The chute will extend back 15 feet from the front of the curb, open in the grass areas and with an embossed ("slip-free") steel grate (60" x 28" x 0.5") for the sidewalk. The parking curb will extend over the chute, and the parking pavement will flare out from this opening.

LANDSCAPE SCHEDULE:

KEY	QTY.	BOTANICAL NAME
FP	8	Populus tremidoides
RA	5	Spirea prunifolia
CL	5	Cotoneaster lucidus
JS	4	Juniperus sabina

DRAINAGE PLAN See drainage study for additional information.



DRAINAGE SUMMARY

Drainage from site discharge is entirely onto Flormann Street. There is no on-flow; alley now drains to east along rutting and will continue with curb on south edge of property. Current discharges: 1.2 cfs (100-year), 0.7 cfs (10-year).

Discharges as proposed:

Through driveway, 9,950 SF will discharge 1.0 cfs (100-year) to 0.6 cfs (10-year). Through chute, 10,175 SF will discharge 1.4 cfs (100-year) to 0.9 cfs (10-year). Discharges will be to gutter on South curb of Flormann Street and will not significantly increase total flows to storm sewer inlets on Flormann just west of Fifth Street.

Design details

Aspen Medical Center
South Parking

Rapid City, South Dakota

FILE NAME: 5020-05A.dwg
DATE: 11 JUN 2002



Scale as shown

PREPARED BY: NATHAN A. BARTON, PE, DEE

SITE INFORMATION:

615-619 FLORMANN ST.
Current Zoning: Medium-Density Residential
Proposed Zoning: Office Commercial
Size: 17,500 SF (0.40 acres)
Lots 7-11, Block 17, South Blvd. Addn., 12-1N-7E
Adjacent Zoning: North/West: Office Commercial.
East/South: Medium-Density Residential

NOTE REGARDING SITE PLAN DATA:

THE SITE & TOPOGRAPHICAL INFORMATION SHOWN ON THIS SITE PLAN IS COMPILED FROM VARIOUS MAPPING SOURCES NECESSARY FOR PLANNING WORK. SITE CONDITIONS SHOWN MAY NOT ACCURATELY DEPICT ALL ON-SITE CONDITIONS PRIOR TO THE START OF CONSTRUCTION. IT IS THE RESPONSIBILITY OF THE USER TO VERIFY THE ACCURACY OF THE DATA INCLUDED IN THIS SITE PLAN.