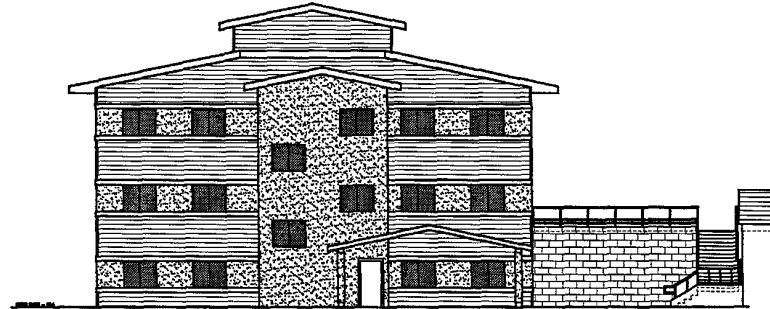
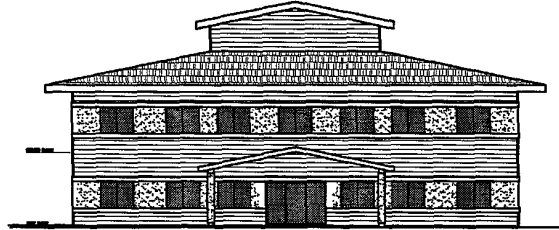


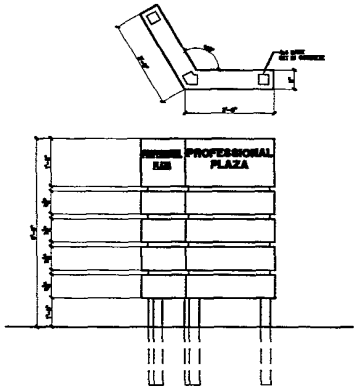
WEST ELEVATION  
SCALE: 1/8" = 1'-0"



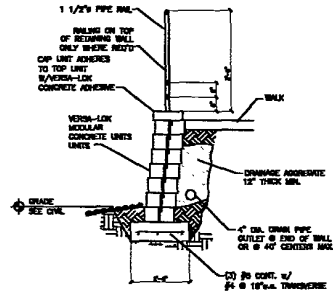
SOUTH ELEVATION  
SCALE: 1/8" = 1'-0"



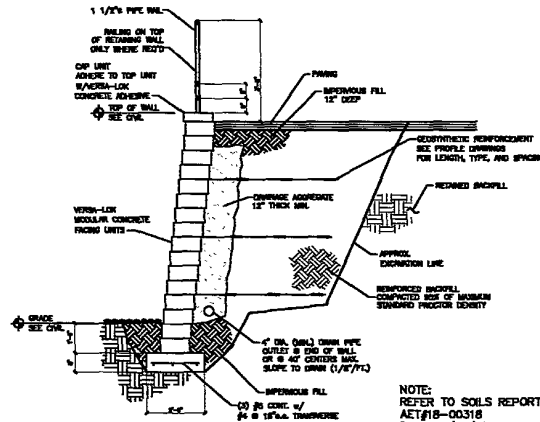
NORTH ELEVATION  
SCALE: 1/8" = 1'-0"



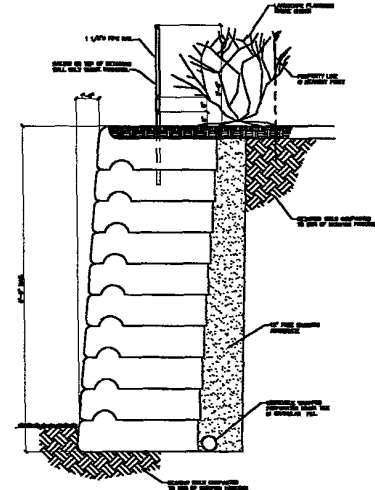
GROUND MOUNTED BUILDING SIGN ELEVATION  
SCALE: 1/8" = 1'-0"



TYPICAL SECTION—UNREINFORCED RETAINING WALL  
SCALE: NONE



TYPICAL SECTION—REINFORCED RETAINING WALL  
SCALE: NONE



SECTION — REDI-ROCK RETAINING WALL  
SCALE: NONE

NOTE:  
REFER TO SOILS REPORT:  
AET#18-00318  
DATE: 3/19/01