

PROPERTY LINE CURVES			
Key	A	R	L
①	13° 38' 00"	350.00	83.28
②	26° 09' 56"	201.70	92.11
③	31° 54' 23"	170.00	124.34
④	33° 24' 50"	170.00	108.49
⑤	108° 34' 19"	38.00	72.01
⑥	92° 33' 06"	180.00	232.92
⑦	26° 09' 56"	301.70	137.78
⑧	47° 28' 39"	170.00	140.87

SHORT PROPERTY LINES		
Key	Bearing	Dist
⑩	S 88° 00' 34" W	123.69
⑪	N 80° 10' 00" W	123.00
⑫	S 87° 00' 00" W	76.00
⑬	S 67° 00' 00" W	116.30
⑭	N 31° 04' 32" W	115.49
⑮	N 06° 53' 04" W	48.54
⑯	S 06° 24' 34" E	107.14
⑰	S 31° 34' 32" E	66.76
⑱	N 88° 62' 52" W	161.89
⑲	S 03° 07' 08" W	116.02
⑳	S 68° 46' 22" E	76.23
㉑	S 69° 37' 28" E	61.19
㉒	S 69° 37' 28" E	51.26
㉓	N 00° 00' 00" W	40.00

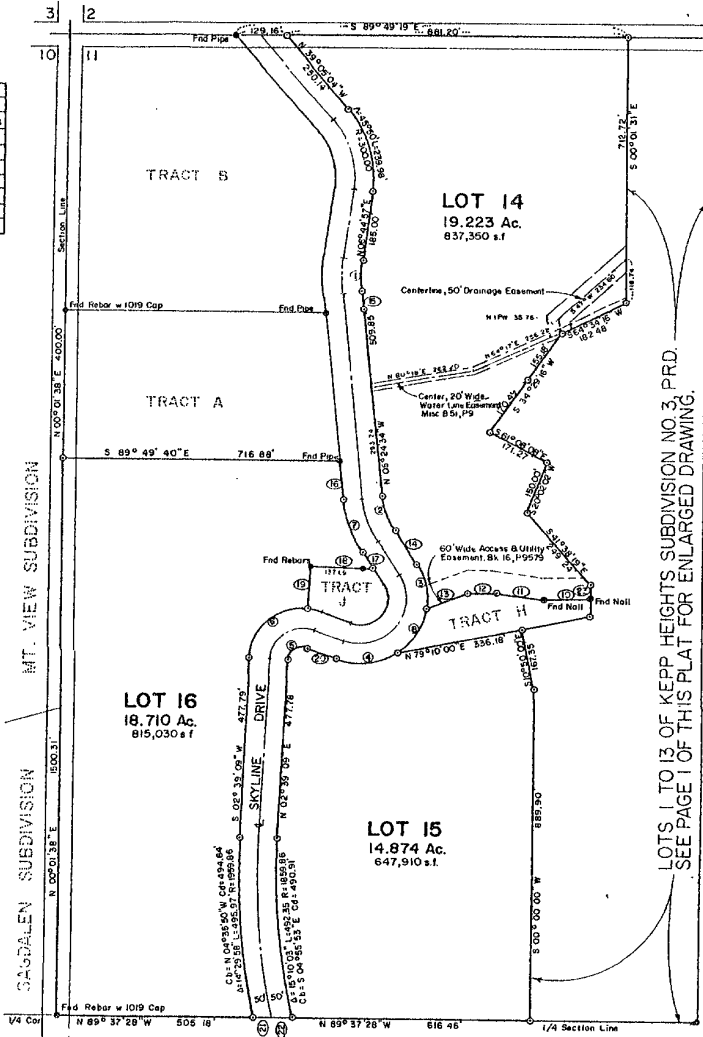
Handwritten signature: Thomas R. Smith

FISK ENGINEERING, INC.
 P.O. Box 8154
 Rapid City
 South Dakota
 57709
 (605) 348-1538
 Project No. 91-06-04

All major drainage easements shown hereon shall be kept free of all obstructions, including but not limited to buildings, walls, fences, hedges, trees and shrubs. These easements grant to all public authorities the right to construct, operate, maintain, inspect and repair such improvements and structures as it deems expedient to facilitate drainage from any source.

Utility and Minor Drainage Easements - 8' on the interior side of all side and rear lot lines.

BUILDING PERMITS WILL NOT BE ISSUED FOR LOTS 14, 15 OR 16 UNTIL ADEQUATE ON-SITE OR CENTRAL WASTE DISPOSAL SYSTEMS ARE APPROVED BY THE CITY OF RAPID CITY.



LOTS 1 TO 13 OF KEPP HEIGHTS SUBDIVISION NO. 3, PRD. SEE PAGE 1 OF THIS PLAT FOR ENLARGED DRAWING.

CERTIFICATE OF STREET AUTHORITY State of South Dakota County of Pennington ss

The location of the proposed access road to the County or State Highway or City Street as shown hereon is hereby approved. Any change in the location of the proposed access shall require additional approval.

Street Authority Robyn J. Suddick Date Jan 24, 1992

CERTIFICATE OF COUNTY TREASURER State of South Dakota County of Pennington ss

I, Treasurer of Pennington County, do hereby certify that all taxes which are liens upon the within described lands have been fully paid according to the records of my office.

Dated this 17 day of January, 1992 Pennington County Treasurer Wendy S. Pay Deputy

CERTIFICATE OF DIRECTOR OF EQUALIZATION State of South Dakota County of Pennington ss

I, Director of Equalization of Pennington County, do hereby certify that I have on file in my office a copy of the within described plat of land.

Signed this 27th day of January, 1992 Pennington County Director of Equalization Ronald H. Richmond by me

APPROVED: Larry J. Auger DATE: Jan. 27, 1991

CERTIFICATE OF FINANCE OFFICER State of South Dakota County of Pennington ss

I, Finance Officer of the City of Rapid City, do hereby certify that all special assessments which are liens upon the within described lands are fully paid according to the records of my office.

Dated this 16 day of November, 1991 Finance Officer of the City of Rapid City R. K. Wellstrom

RESOLUTION OF GOVERNING BOARD State of South Dakota County of Pennington ss

I, Finance Officer of the City of Rapid City, do hereby certify that at an official meeting held on the 20th day of Jan., 1992, the Rapid City Common Council did by resolution approve the within plat.

Dated this 24 day of Jan, 1992 Finance Officer of the City of Rapid City M. Wells

CERTIFICATE OF THE REGISTER OF DEEDS State of South Dakota County of Pennington ss # 90879

Filed for record this 27th day of January, 1992 at 4:30 o'clock P. M., and recorded in Book 24 of Plats on Page 103-104

Pennington County Register of Deeds T. Marlye Dyer by her board Fees 5.00