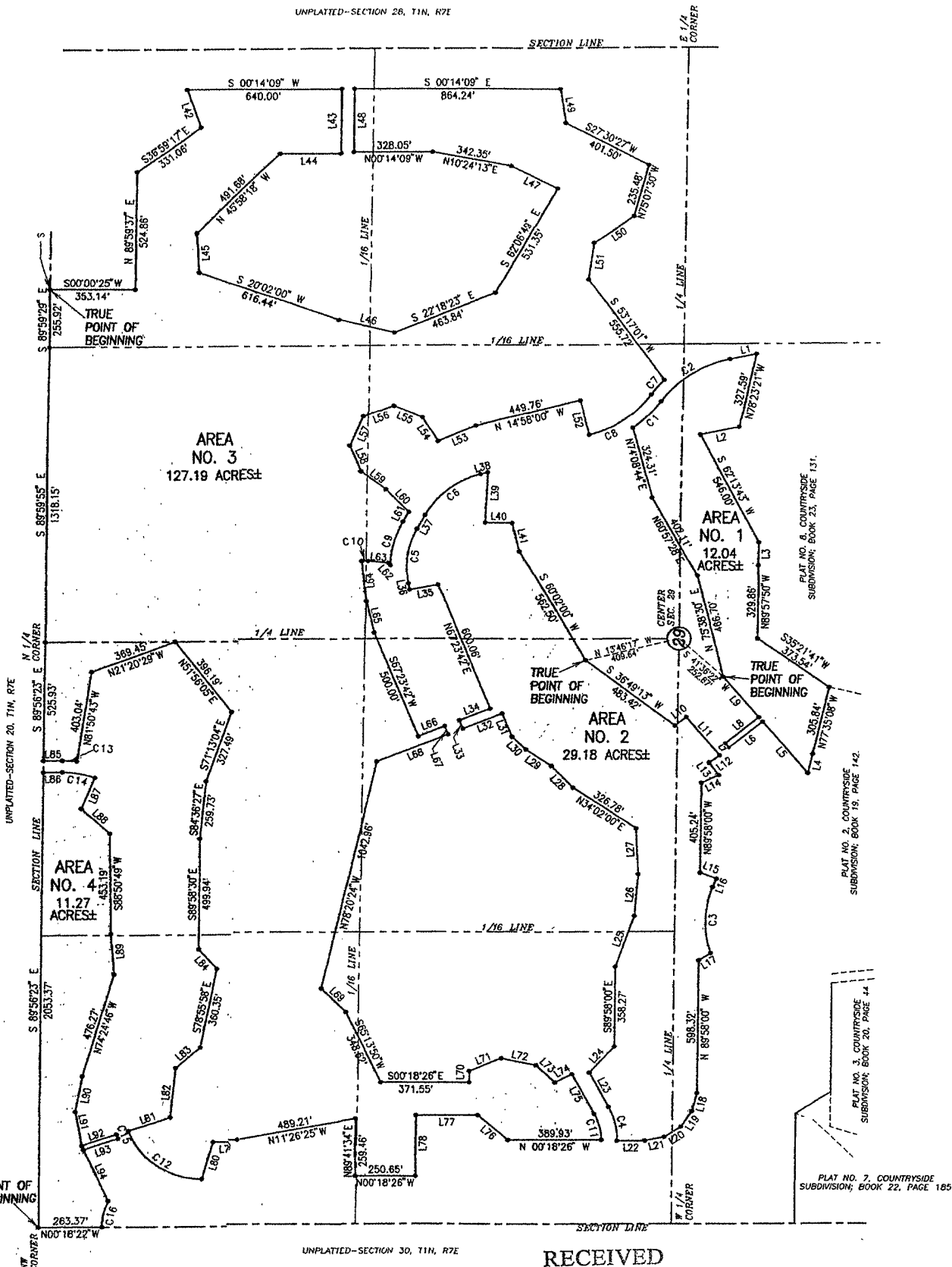


L92	N19°17'53" W	150.00'
L93	S18°17'53" E	150.00'
L94	N85°34'24" E	264.94'

UNPLATTED-SECTION 26, T1N, R7E



PLAT NO. 8, COUNTRYSIDE SUBDIVISION; BOOK 23, PAGE 131.

PLAT NO. 2, COUNTRYSIDE SUBDIVISION; BOOK 19, PAGE 142.

PLAT NO. 3, COUNTRYSIDE SUBDIVISION; BOOK 20, PAGE 44.

PLAT NO. 7, COUNTRYSIDE SUBDIVISION; BOOK 22, PAGE 185.

RECEIVED

11/19/02

Rapid City Planning Department

PREPARED FOR DREAM DESIGN INTERNATIONAL, INC. 3202 W. MAIN RAPID CITY, S (605) 348-00

PREPARED BY: ARLETH & ASSOCIATES 382 MAIN STREET DEADWOOD, SD 57732 605-578-1637

JOB NO. 98-0040.C

DATE: 5/22/01 SCALE: 1" = 300'

APPROVED:

DRAWN: WRD, REV 1/16

DWG: PAGE-DEU.DWG