

CLIENT COPY
PRINTED

MAR 09 2001

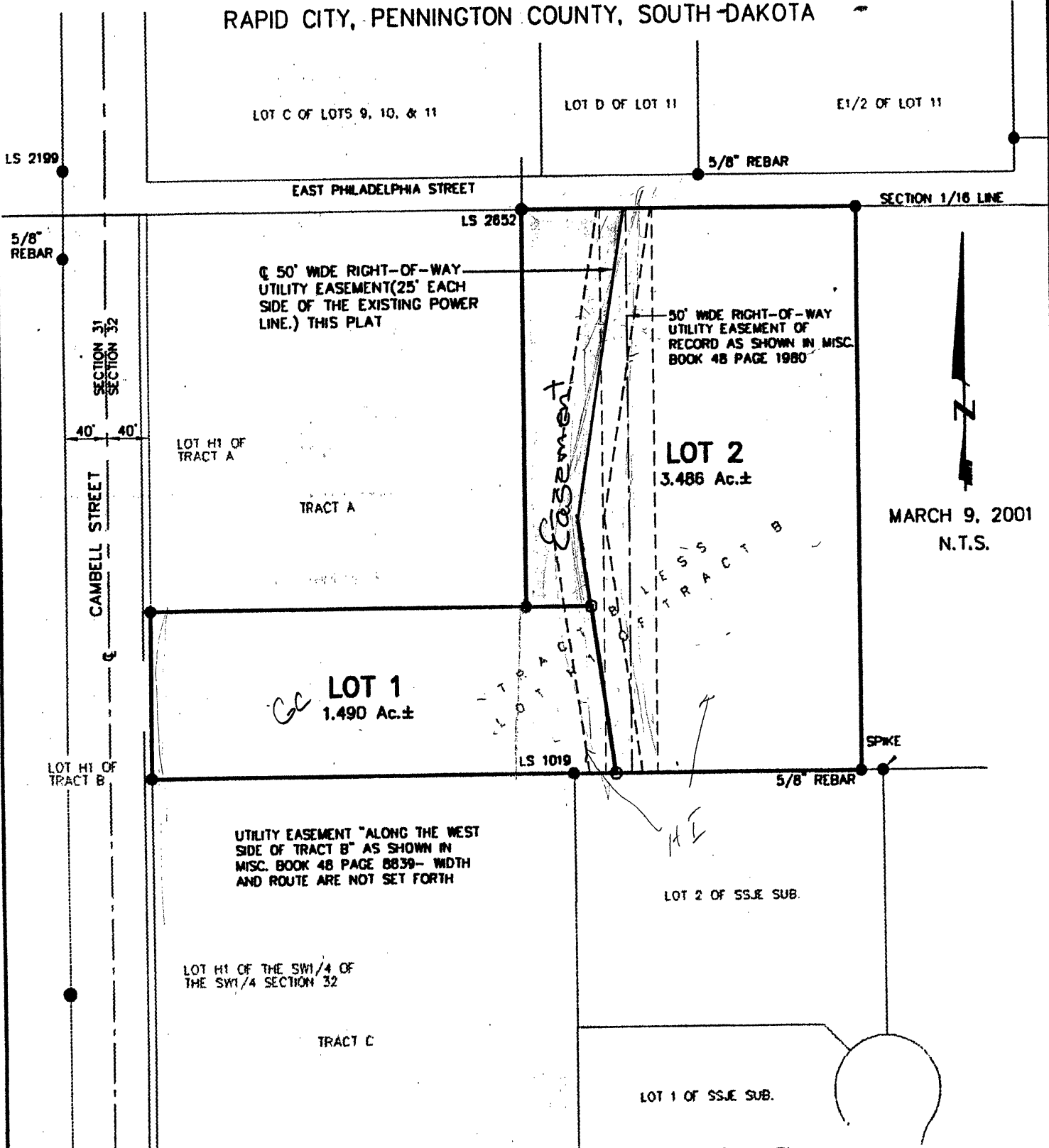
LAYOUT PLAT OF
LOTS 1 AND 2
DEVINE SUBDIVISION

(formerly Tract B less Lot H1 of Tract B)

LOCATED IN SW¹/₄ OF THE SW¹/₄

SECTION 32, T2N, R8E, BHM

RAPID CITY, PENNINGTON COUNTY, SOUTH DAKOTA



MARCH 9, 2001
N.T.S.



Renner & Sperlich Engineering Co.

616 Sixth St. • Rapid City, SD 57701 • 605/342-1191
FAX: 605/342-1405 • E-MAIL: RSEC@RAPIDNET.COM