

02PD021

OFFICE BUILDING
SITE = 51,000 SF
STRUCTURE = 6,750 SF

LANDSCAPING POINTS REQUIRED = 44,250 POINTS
LANDSCAPING PROVIDED :

8 LARGE TREES @ 2000 = 16,000 POINTS
3500 SY GRASS @ 10 = 35,000 POINTS
64 SHRUBS @ 250 = 16,000 POINTS
TOTAL POINTS PROVIDED = 67,000 POINTS

DACOTAH BANK
SITE = 27,312 SF
STRUCTURE W/ CANOPY = 5,045 SF

LANDSCAPING POINTS REQUIRED = 22,267 POINTS
LANDSCAPING PROVIDED :

55 SHRUBS @ 250 = 13,750 POINTS
3 LARGE TREES @ 2000 = 6,000 POINTS
948 SY GRASS @ 10 = 9,480 POINTS
TOTAL POINTS PROVIDED = 29,230 POINTS



LANDSCAPE LEGEND

Grass

○ LARGE TREE

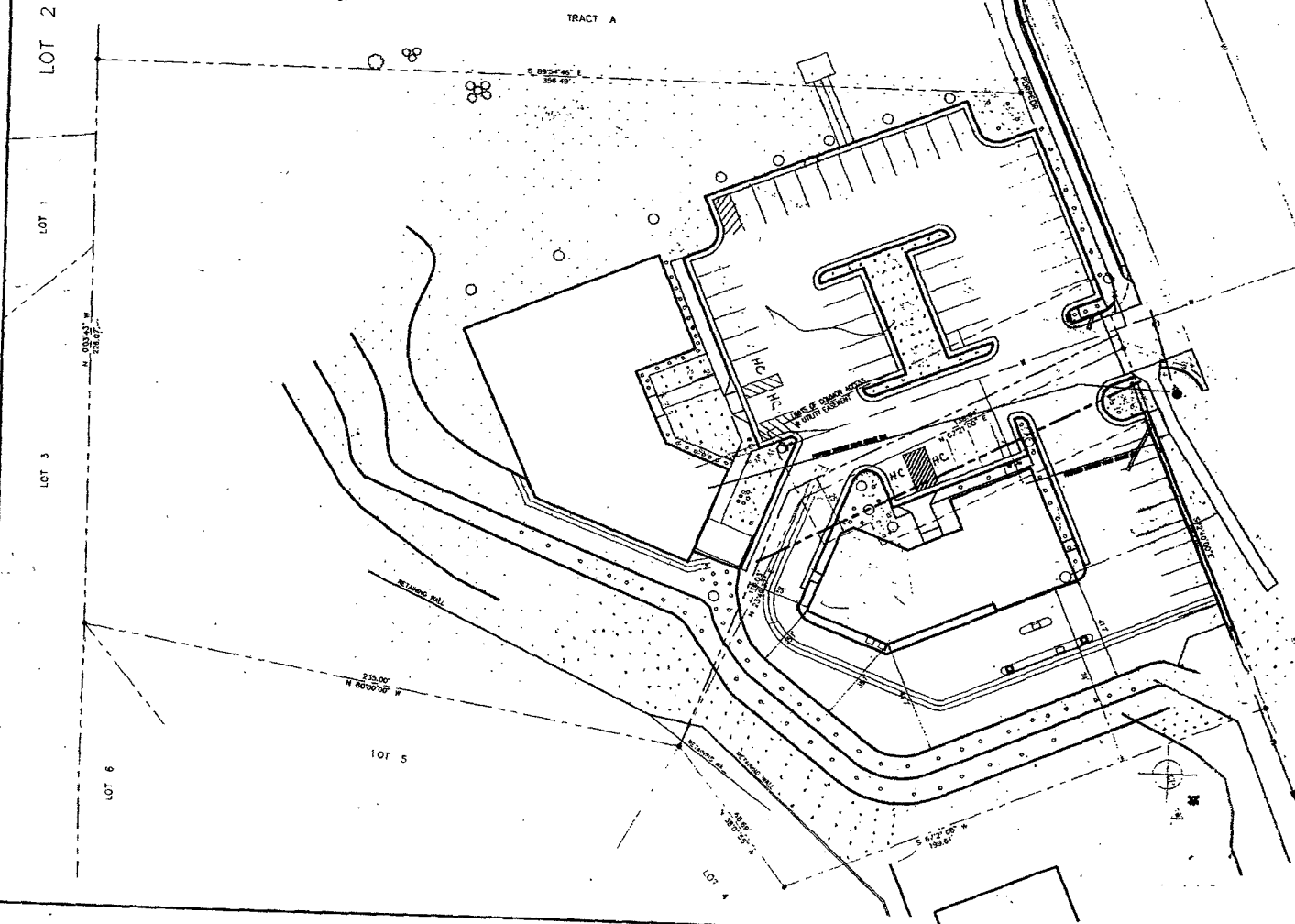
• SHRUB

PARKING REQUIREMENTS:

BANK AREA = 4,450 SF @ 4 = 1118 SPACES
BASEMENT = 1,940 SF @ .25 = 0.48 SPACES

OFFICE BLDG AREA = 6,650 SF @ 5 = 33.25 SPACES

TOTAL PARKING REQUIRED = 51.53
TOTAL PARKING PROVIDED = 58 SPACES



DREAM DESIGN INTERNATIONAL, INC.
D.D.I. PROFESSIONAL STRUCTURAL & CIVIL ENGINEERING CONSULTANTS
100 WEST 20TH AVENUE, SUITE 300, DENVER, CO 80202-2000
TELEPHONE (303) 241-0700

**DACOTAH BANK
SITE PLAN**

DESIGNED BY	DATE
DRAWN BY	SCALE: AS SHOWN
CHECKED BY	DATE

2/5

DEA COPY