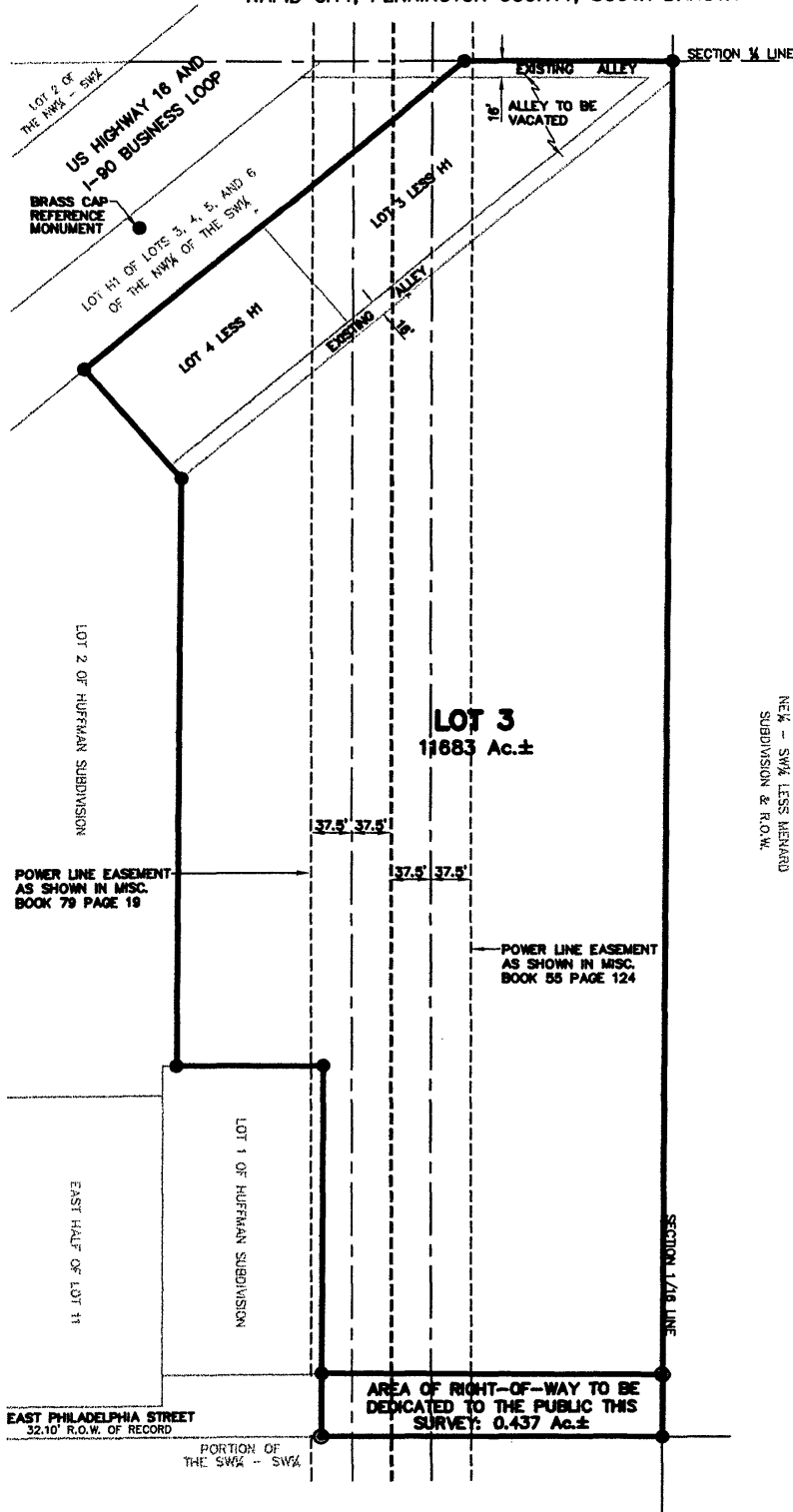


02PL032

PLAT OF LOT 3 OF HUFFMAN SUBDIVISION

(formerly Lots 3 & 4 of the NW1/4 of the SW1/4 of Section 32 less Lot H1 of Lots 3, 4, 5 & 6 of the NW1/4 of the SW1/4 Section 32,
and the unplatted portion of the NW1/4 of the SW1/4 of Section 32 and the existing 16' wide alley)

SECTION 32, T2N, R8E, BHM
RAPID CITY, PENNINGTON COUNTY, SOUTH DAKOTA



MARCH 25, 2002
N.T.S.

NEW - SWA LESS MENARD
SUBDIVISION & R.O.W.



Renner & Sperlich Engineering Co.

616 Sixth St. • Rapid City, SD 57701 • 605/342-1191
FAX: 605/342-1405 • E-MAIL: X19FIAT@AOL.COM

C:\Program Files\Land Desktop\Drawings\1448\1448REV.dwg 03/25/02 08:37:53 AM MST