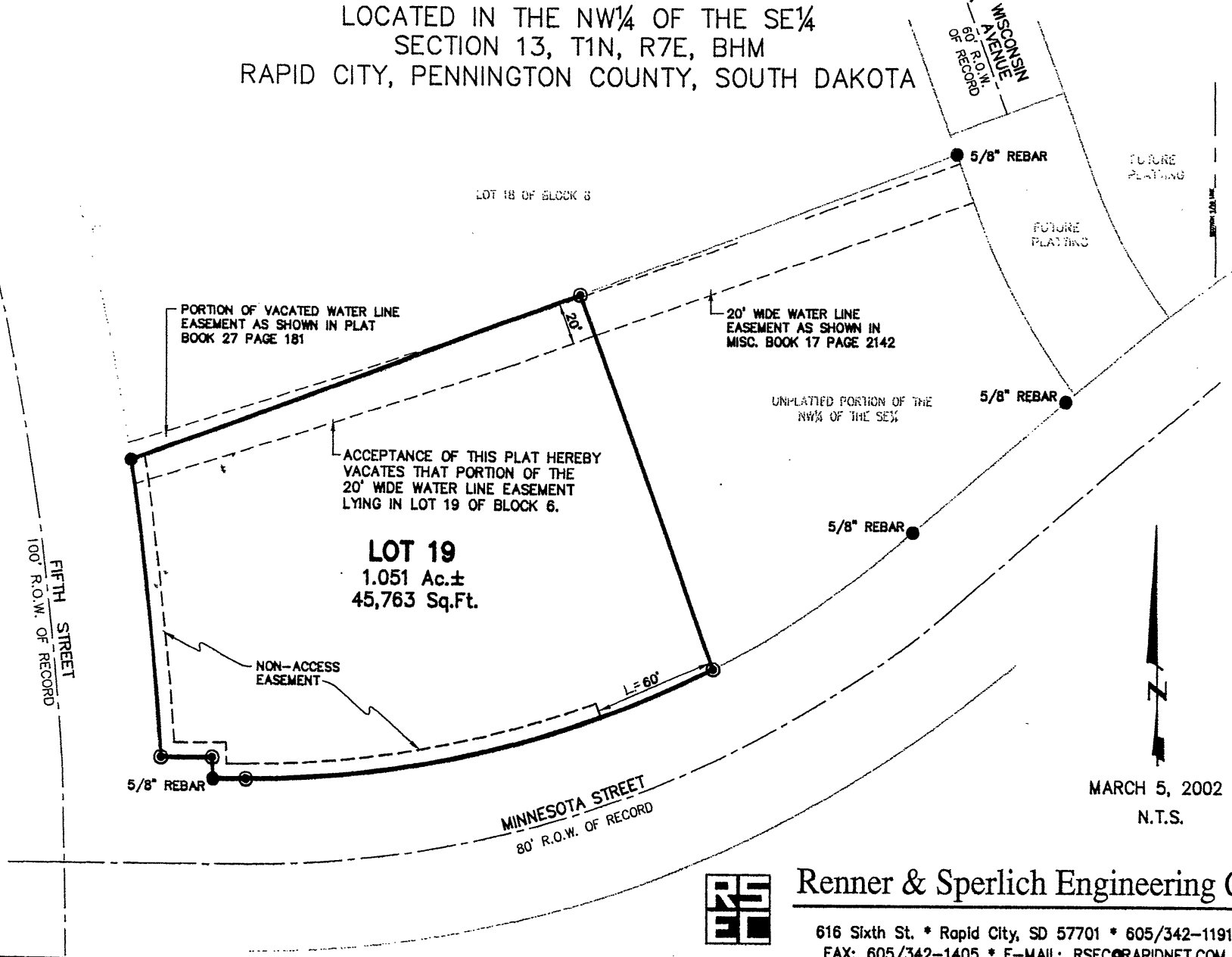


PLAT OF
LOT 19 OF BLOCK 6
ROBBINSDALE ADDITION NO. 10
 (formerly a portion of the NW¼ of the SE¼ of Section 13)
 LOCATED IN THE NW¼ OF THE SE¼
 SECTION 13, T1N, R7E, BHM
 RAPID CITY, PENNINGTON COUNTY, SOUTH DAKOTA



Renner & Sperlich Engineering Co.

616 Sixth St. * Rapid City, SD 57701 * 605/342-1191
 FAX: 605/342-1405 * E-MAIL: RSEC@RAPIDNET.COM