

**East Elevation**  
Scale 1/8"=1'-0"



**West Elevation**  
Scale 1/8"=1'-0"



**North Elevation**  
Scale 1/8"=1'-0"



**South Elevation**  
Scale 1/8"=1'-0"

Revisions	
No.	Description



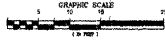
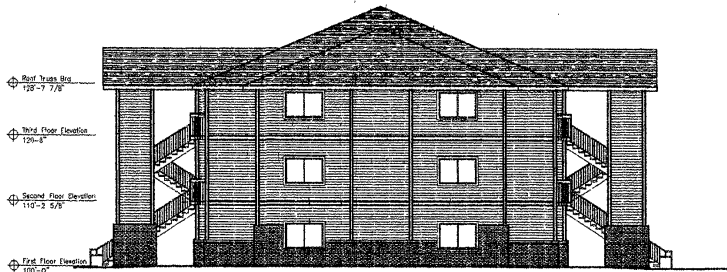
Lyle H. Hennrich, Architect  
528 Saint Joseph Street, Suite A  
Rapid City, South Dakota 57701  
Phone (605) 384-0188



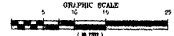
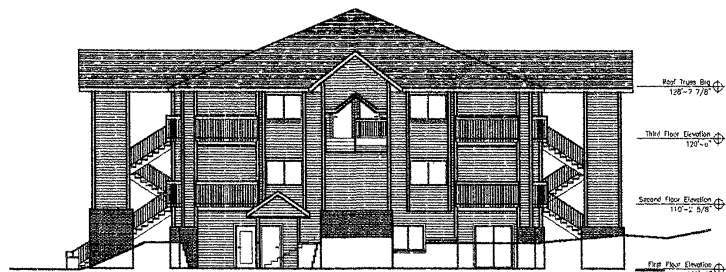
Building Elevations  
1887 Harmony Heights Lane  
Harmony Heights Apartments  
Rapid City, South Dakota



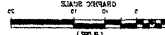
**A10.1**  
Drawing Number



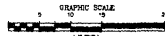
**North Elevation**  
Scale 1/8"=1'-0"



**South Elevation**  
Scale 1/8"=1'-0"



**West Elevation**  
Scale 1/8"=1'-0"



**East Elevation**  
Scale 1/8"=1'-0"

Revisions	
No.	Description



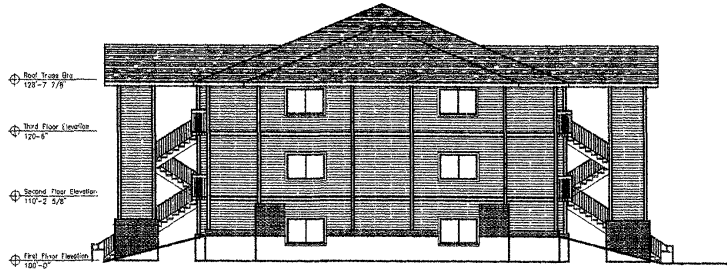
**Lyle H. Henriksen, Architect**  
528 Saint Joseph Street, Suite A  
Rapid City, South Dakota 57701  
Phone (605) 394-0188



**Building Elevations**  
1881 Harmony Heights Lane  
Harmony Heights Apartments  
Rapid City, South Dakota



**A10.2**  
Drawing Number



**West Elevation**  
Scale 1/8"=1'-0"



**East Elevation**  
Scale 1/8"=1'-0"



**South Elevation**  
Scale 1/8"=1'-0"



**North Elevation**  
Scale 1/8"=1'-0"

Revisions	
No.	Description



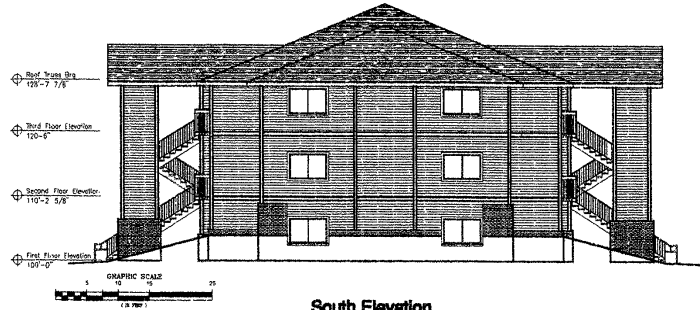
**Lyle H. Henriksen, Architect**  
528 Saint Joseph Street, Suite A  
Rapid City, South Dakota 57701  
Phone (605) 384-0188



**Building Elevations**  
1838 Harmony Heights Lane  
Harmony Heights Apartments  
Rapid City, South Dakota



**A10.3**  
Drawing Number



**South Elevation**  
Scale 1/8"=1'-0"



**North Elevation**  
Scale 1/8"=1'-0"



**East Elevation**  
Scale 1/8"=1'-0"



**West Elevation**  
Scale 1/8"=1'-0"

Revisions	
No.	Description



Lyle H. Henriksen, Architect  
558 Saint Joseph Street, Suite A  
Rapid City, South Dakota 57701  
Phone (605) 384-0128



Building Elevations  
1721 Harmony Heights Lane  
Harmony Heights Apartments  
Rapid City, South Dakota



**A10.6**  
Drawing Number