

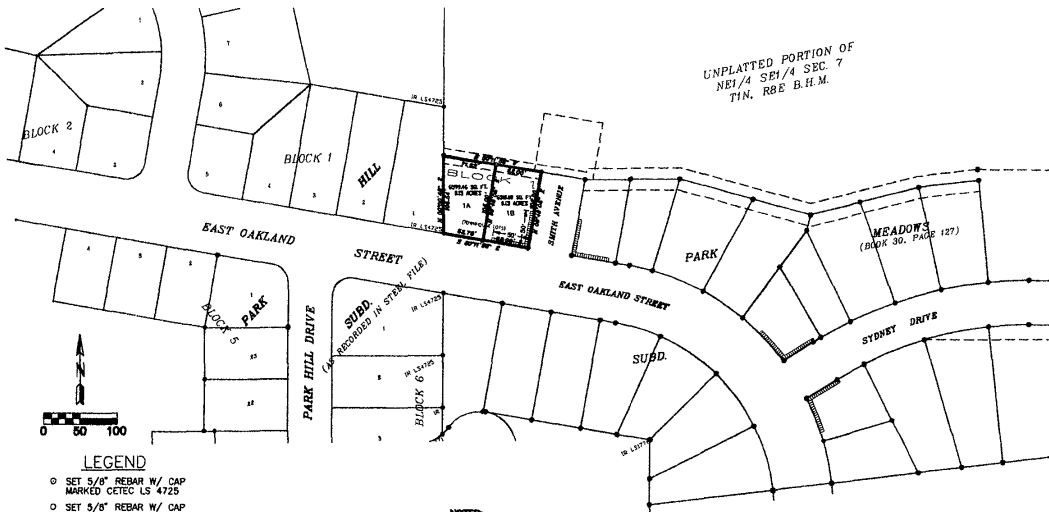
**PLAT OF
LOTS 1A AND 1B OF BLOCK 1,
FORMERLY LOT 1 OF BLOCK 1
OF PARK MEADOWS SUBDIVISION**

LOCATED IN THE NE1/4 OF SE1/4

SECTION 7, T1N, R8E, B.H.M.

RAPID CITY, PENNINGTON COUNTY, SOUTH DAKOTA

02PL014



UNPLATTED PORTION OF
NE1/4 SE1/4 SEC. 7
T1N. R8E B.H.M.

LEGEND

- SET 5/8" REBAR W/ CAP MARKED CETEC LS 4725
- SET 5/8" REBAR W/ CAP MARKED CETEC LS 4725 ROW P.C.'s, P.T.'s, AND EASEMENT CORNERS
- FOUND SURVEY MONUMENT
- (A) INDICATES DIMENSION PREVIOUSLY RECORDED

NOTES

1. Building Setback requirements are as stated in the zoning and/or plotting regulations.
2. Utility and Minor Drainage Easements - 5' on the interior side of all front, side and rear lot