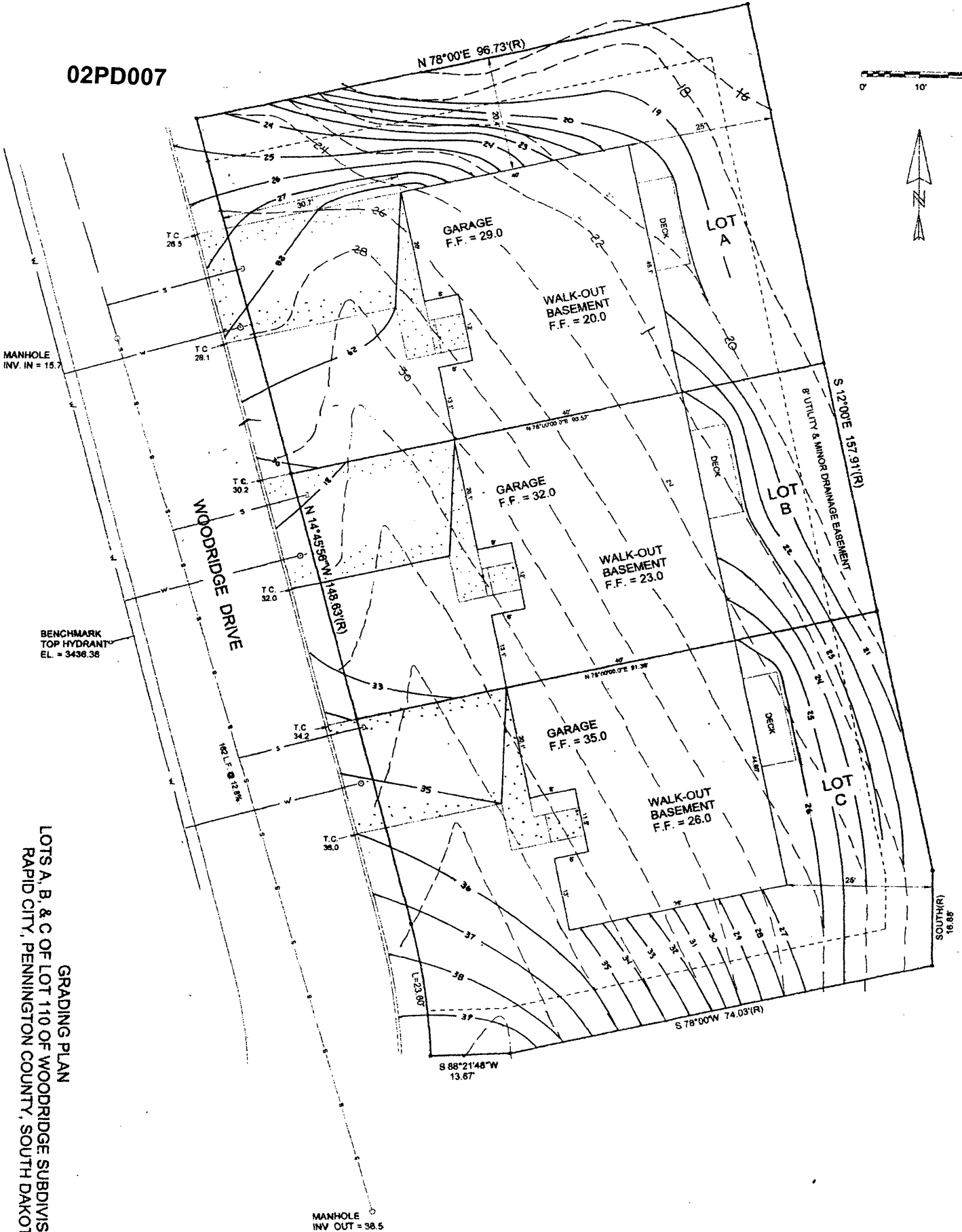
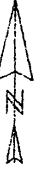
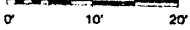


02PD007



MANHOLE
INV. IN = 15.7

WOODRIDGE DRIVE

BENCHMARK
TOP HYDRANT
EL. = 3436.38

GARAGE
F.F. = 29.0

WALK-OUT
BASEMENT
F.F. = 20.0

GARAGE
F.F. = 32.0

WALK-OUT
BASEMENT
F.F. = 23.0

GARAGE
F.F. = 35.0

WALK-OUT
BASEMENT
F.F. = 26.0

LOT A

LOT B

LOT C

UTILITY & MINOR DRAINAGE EASEMENT
S 12°00'E 157.91'(R)

S 88°21'48"W
13.67'

S 78°00'W 74.03'(R)

MANHOLE
INV. OUT = 38.5

GRADING PLAN
LOTS A, B, & C OF LOT 110 OF WOODRIDGE SUBDIVISION
RAPID CITY, PENNINGTON COUNTY, SOUTH DAKOTA