

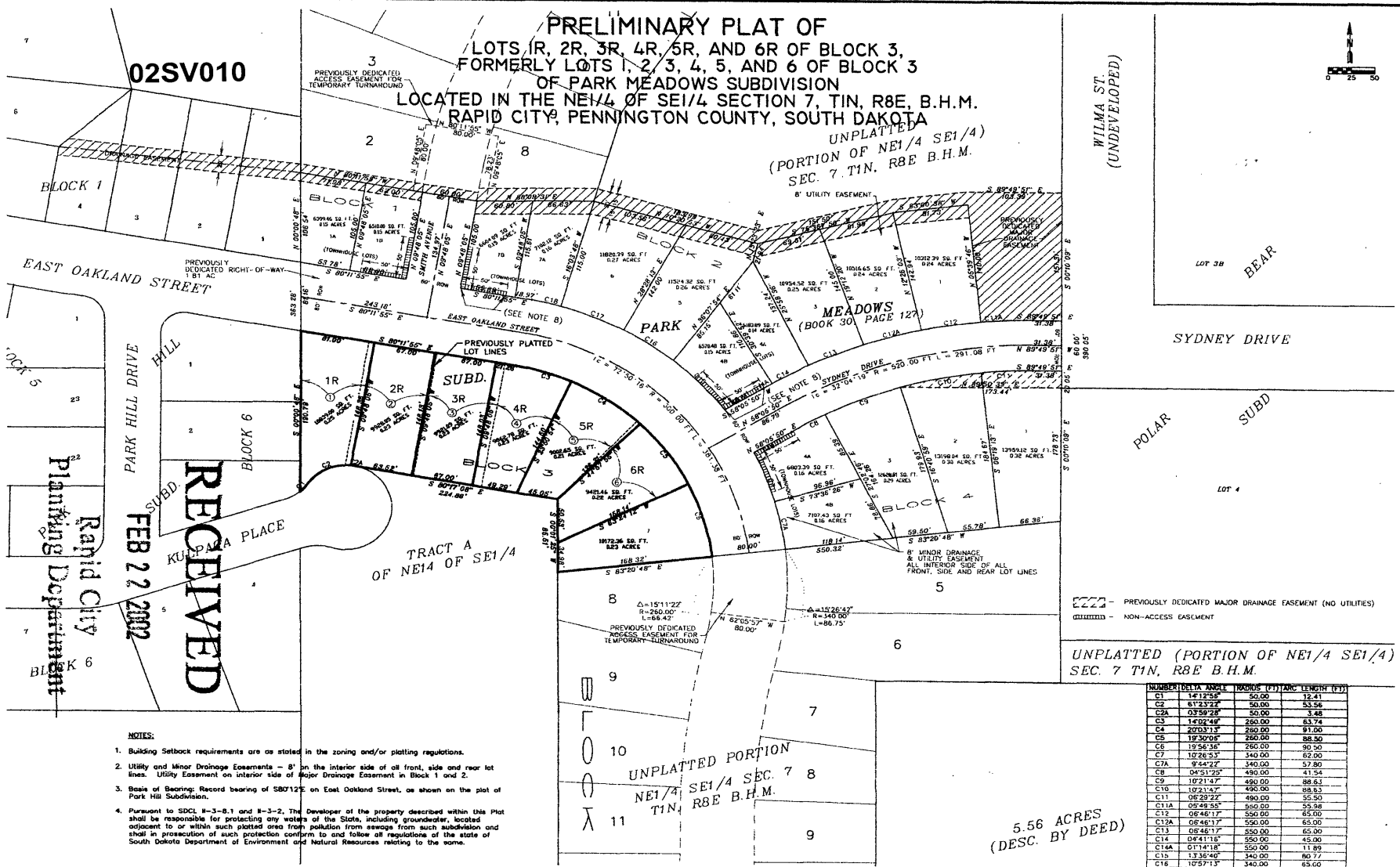
02SV010

**PRELIMINARY PLAT OF
LOTS 1R, 2R, 3R, 4R, 5R, AND 6R OF BLOCK 3,
FORMERLY LOTS 1, 2, 3, 4, 5, AND 6 OF BLOCK 3
OF PARK MEADOWS SUBDIVISION
LOCATED IN THE NE 1/4 OF SE 1/4 SECTION 7, T1N, R8E, B.H.M.
RAPID CITY, PENNINGTON COUNTY, SOUTH DAKOTA**

UNPLATTED
(PORTION OF NE 1/4 SE 1/4)
SEC. 7 T1N, R8E B.H.M.



WILMA ST.
(UNDEVELOPED)



----- PREVIOUSLY DEDICATED MAJOR DRAINAGE EASEMENT (NO UTILITIES)
----- NON-ACCESS EASEMENT

UNPLATTED (PORTION OF NE 1/4 SE 1/4)
SEC. 7 T1N, R8E B.H.M.

NUMBER	DELTA	ANGLE	RADIUS (FT)	ARC LENGTH (FT)
C1	141.256		50.00	12.41
C2	61.2323		50.00	53.56
C2A	03.5922		50.00	3.48
C3	140.2246		260.00	83.74
C4	200.3113		260.00	91.00
C5	19.5000		260.00	88.50
C6	19.5436		250.00	90.50
C7	10.2653		340.00	62.00
C7A	9.4422		340.00	57.80
C8	04.5123		450.00	41.54
C9	10.7147		450.00	88.63
C10	10.7147		450.00	88.63
C11	05.2932		450.00	55.50
C11A	05.2955		450.00	55.58
C12	06.4617		550.00	65.00
C12A	05.4617		550.00	65.00
C13	05.4617		550.00	65.00
C14	04.4118		550.00	45.00
C14A	03.4118		550.00	11.99
C15	1.3640		340.00	60.77
C16	10.9713		340.00	85.00
C17	12.2425		340.00	73.62
C18	05.2857		340.00	52.53

5.56 ACRES
(DESC. BY DEED)

NOTES:

- Building setback requirements are as stated in the zoning and/or platting regulations.
- Utility and Minor Drainage Easements - 8' on the interior side of all front, side and rear lot lines. Utility Easement on interior side of Major Drainage Easement in Block 1 and 2.
- Base of Bearing: Record bearing of S80°12'E on East Oakland Street, as shown on the plat of Park Hill Subdivision.
- Pursuant to SDCL §§3-8.1 and 8-3-2, The developer of the property described within the Plat shall be responsible for protecting any waters of the State, including groundwater, located adjacent to or within such platted area from pollution from sewage from such subdivision and shall in prosecution of such protection conform to and follow all regulations of the state of South Dakota Department of Environment and Natural Resources relating to the same.

FEB 22 2002

RECEIVED

Rapid City
Planning Department

1650 West Fulton Street
Rapid City, SD 57701
1017 Junction Avenue
Rapid City, SD 57705
Phone: (605) 341-7800
Fax: (605) 341-7800
e-mail: info@celec.com

CELEC
Engineering & Surveying, Inc.

DESIGNED: DT
DRAWN: BR
CHECKED: BR
APPROVED: DT
DATE: 2/22/02

PRELIMINARY PLAT
LOTS 1R, 2R, 3R, 4R, 5R, AND
6R OF BLOCK 3
OF PARK MEADOWS SUBDIVISION

PARK MEADOWS SUBDIVISION
PHASE 1

3 OF 19