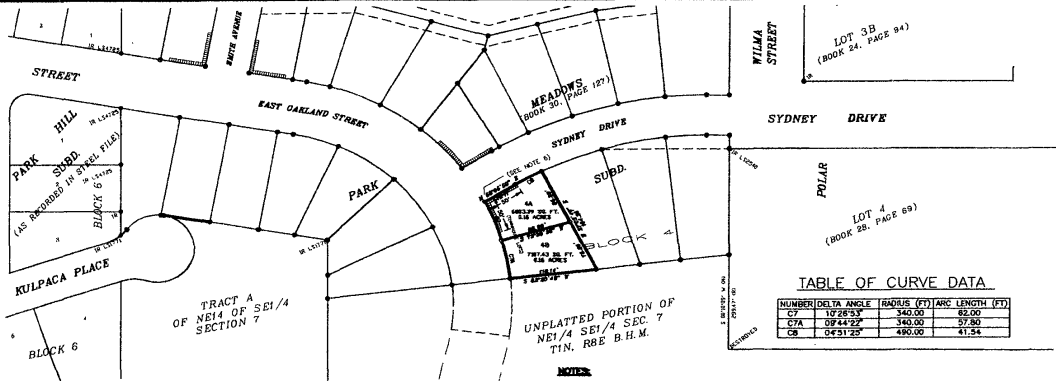


02PL015

**PLAT OF
LOTS 4A AND 4B OF BLOCK 4,
FORMERLY LOT 4 OF BLOCK 4
OF PARK MEADOWS SUBDIVISION**

LOCATED IN THE NE1/4 OF SE1/4
SECTION 7, T1N, R8E, B.H.M.
RAPID CITY, PENNINGTON COUNTY, SOUTH DAKOTA



LOT 3B
(BOOK 24, PAGE 84)

SYDNEY DRIVE

POLAR

LOT 4
(BOOK 28, PAGE 69)

TABLE OF CURVE DATA

NUMBER	DELTA ANGLE	RADIUS (FT)	ARC LENGTH (FT)
C7	10°26'53"	340.00	82.00
C7A	09°44'22"	340.00	57.80
C8	04°51'25"	490.00	41.54

UNPLATTED PORTION OF
NE1/4 SE1/4 SEC. 7
T1N, R8E B.H.M.

NOTES

1. Building setback requirements are as stated in the zoning and/or plotting regulations.