

02SV004

LOT 3
RIMROCK RANCH

NE 1/4 NE 1/4

NO ACCESS ONTO SD
HIGHWAY 841
PLAT BOOK 27
PAGE 148

C1
R=1221.00'
L=68.30'
DELTA= 1°10'32"
CB=108°30'4"W
CB=88.00'

C2
R=1221.00'
L=68.30'
DELTA= 3°11'32"
CB=148°46'52"W
CB=88.00'

C3
R=1221.00'
L=102.78'
DELTA= 7°10'07"
CB=183°57'41"W
CB=182.00'

COMMON ACCESS EASEMENT
THIS PLAT

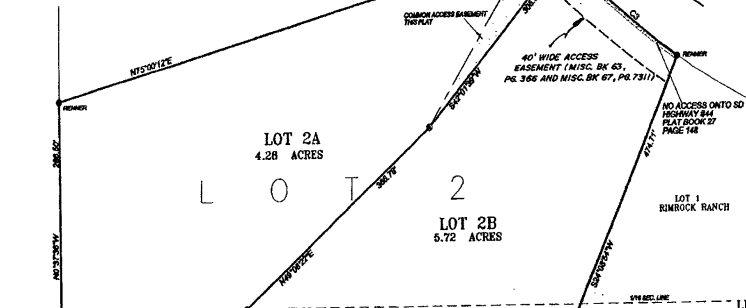
40' WIDE ACCESS
EASEMENT (MISC. BK 63,
PG. 366 AND MISC. BK 67, PG. 7311)

NO ACCESS ONTO SD
HIGHWAY 841
PLAT BOOK 27
PAGE 148

LOT 2A
4.28 ACRES

LOT 2B
5.72 ACRES

LOT 1
RIMROCK RANCH



LEGEND

- = SET REBAR WITH RW FISK 6565 CAP
- = FOUND MONUMENT AS NOTED
- = FOUND USFS ALUMINUM MONUMENT

NOTES

UTILITY AND MINOR DRAINAGE EASEMENTS
8' ON THE INTERIOR SIDE OF ALL LOT LINES

Any major drainage easement shown hereon shall be kept free of all obstructions including but not limited to buildings, walls, fences, hedges, trees and shrubs. These easements grant to all public authorities the right to construct, operate, maintain, inspect and repair such improvements and structures as it deems expedient to facilitate drainage from any source.

LOT 1

LOT 2

LOT 3

LOT 4

TRACT H

SE 1/4 NE 1/4