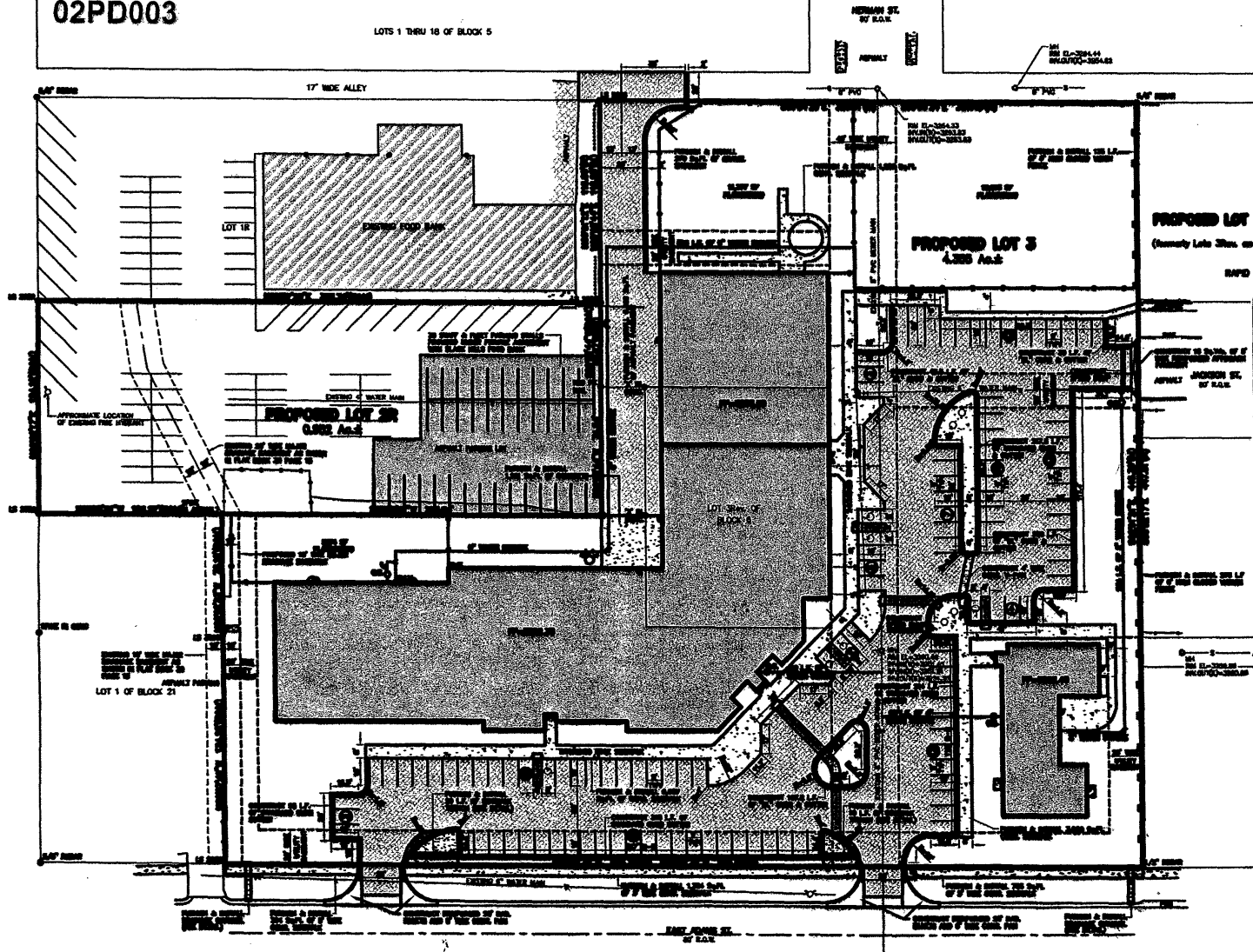
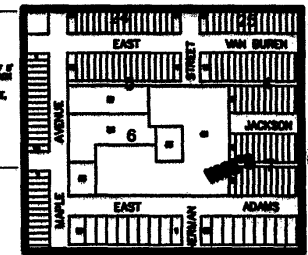


02PD003

LOTS 1 THRU 18 OF BLOCK 5



LEGAL DESCRIPTION
PROPOSED LOT 2R AND PROPOSED LOT 3 OF BLOCK 5
 (Formerly Lots 2R and 3R of Block 5, and Lot 2 of Block 21, West's Addition)
 LOCATED IN THE CITY OF RENO,
 SECTION 20, T34S, R05E, S04S
 RENO CITY, FERNANDO COUNTY, SOUTH DAKOTA



LEGEND

- 0.5" = 1' FIRE HYDRANT
- 1" = 1' WALK
- 2" = 1' WALK
- 3" = 1' WALK
- 4" = 1' WALK
- 5" = 1' WALK
- 6" = 1' WALK
- 7" = 1' WALK
- 8" = 1' WALK
- 9" = 1' WALK
- 10" = 1' WALK
- 11" = 1' WALK
- 12" = 1' WALK
- 13" = 1' WALK
- 14" = 1' WALK
- 15" = 1' WALK
- 16" = 1' WALK
- 17" = 1' WALK
- 18" = 1' WALK
- 19" = 1' WALK
- 20" = 1' WALK
- 21" = 1' WALK
- 22" = 1' WALK
- 23" = 1' WALK
- 24" = 1' WALK
- 25" = 1' WALK
- 26" = 1' WALK
- 27" = 1' WALK
- 28" = 1' WALK
- 29" = 1' WALK
- 30" = 1' WALK
- 31" = 1' WALK
- 32" = 1' WALK
- 33" = 1' WALK
- 34" = 1' WALK
- 35" = 1' WALK
- 36" = 1' WALK
- 37" = 1' WALK
- 38" = 1' WALK
- 39" = 1' WALK
- 40" = 1' WALK
- 41" = 1' WALK
- 42" = 1' WALK
- 43" = 1' WALK
- 44" = 1' WALK
- 45" = 1' WALK
- 46" = 1' WALK
- 47" = 1' WALK
- 48" = 1' WALK
- 49" = 1' WALK
- 50" = 1' WALK

NOTES
 1. SEE SHEET 02PD002 FOR LEGAL DESCRIPTION AND SURVEY DATA.
 2. ALL DIMENSIONS ARE TO FACE UNLESS OTHERWISE NOTED.
 3. ALL UTILITIES SHOWN ARE BASED ON RECORD DRAWINGS AND FIELD SURVEY.
 4. THE OWNER SHALL BE RESPONSIBLE FOR OBTAINING ALL NECESSARY PERMITS.
 5. THE ENGINEER'S RESPONSIBILITY IS LIMITED TO THE DESIGN AND CONSTRUCTION OF THE PROPOSED STRUCTURES.

The location of utility underground utilities are shown as best as can be determined from records and field survey. The engineer is not responsible for the accuracy of the utility locations shown on this plan. The owner shall be responsible for obtaining all necessary permits and for the safety of the construction.



Renner & Spedick Engineering Co.
 7196
 STATE OF SOUTH DAKOTA
 PROFESSIONAL ENGINEERS

Y & F SERVICES
 ADDITION & REMODEL
 5000 13TH AVE S
 SUITE 100
 BISMARCK SD 58102

SITE PLAN

ACQUISITIONS