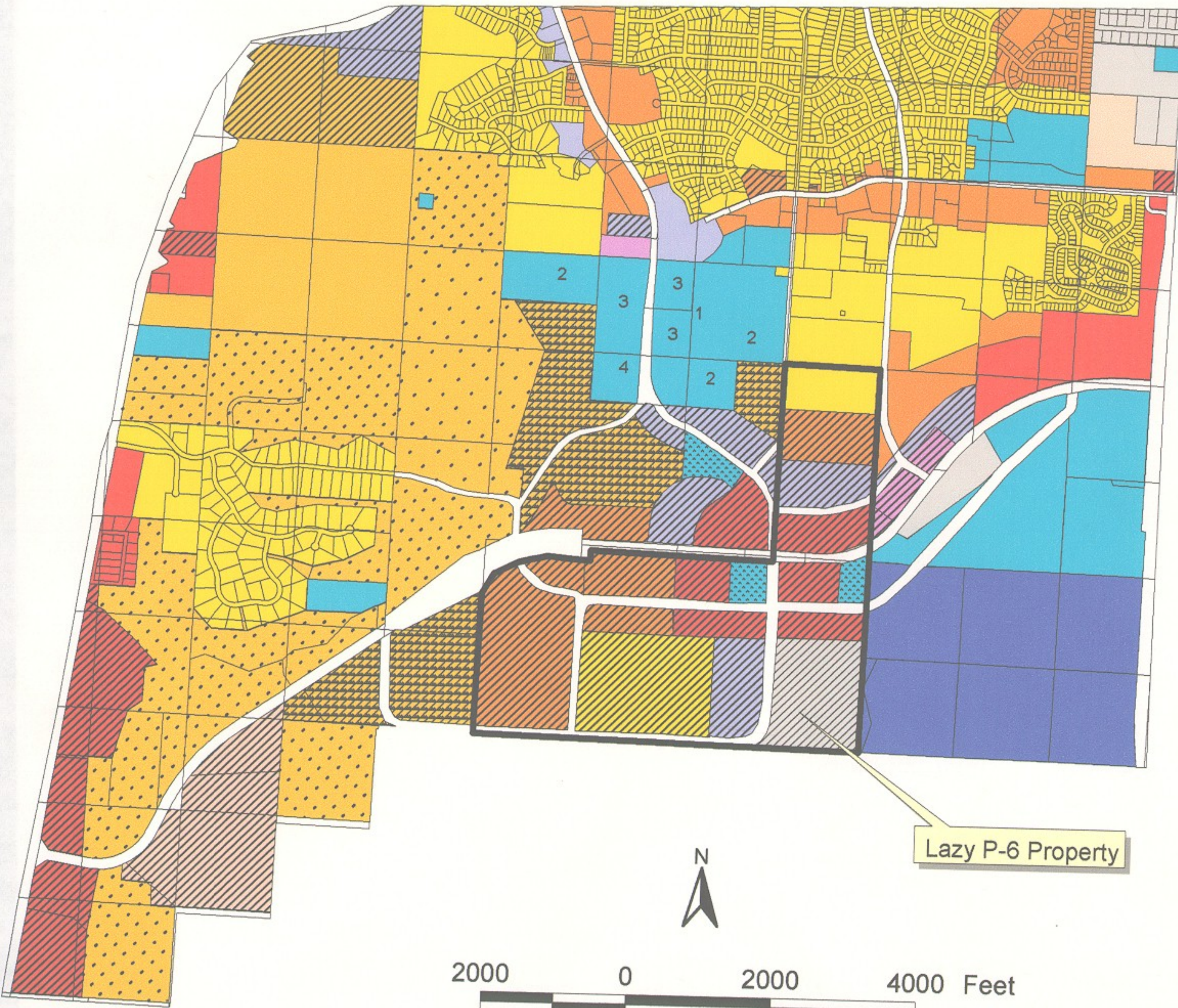


# Lazy P-6 Property as proposed by the City Council



- Future Land Use Designations**
- Low Density Residential
  - LDR w/PRD
  - Medium Density Residential
  - MDR w/PRD
  - Mobile Home Park
  - Mobile Home Residential
  - PRD Max Density 1 du / 3ac
  - PRD Max Density 1 du / 2ac
  - PRD Max Density 1 du / ac
  - PRD Max Density 2.5 du / ac
  - PRD Max Density 6.7 du/ac
  - Planned Unit Development
  - Neighborhood Commercial
  - NC w/PCD
  - Office Commercial
  - OC w/PCD
  - General Commercial
  - GC w/PCD
  - Light Industrial
  - LI w/PLID
  - Heavy Industrial
  - Public
  - Public Drainage
  - ROW

- Alternate Land Use**
1. LDR
  2. PRD Max Density 6.7 du/ac
  3. OC w/PCD 400 feet back from ROW
  4. Drainage

Lazy P-6 Property

