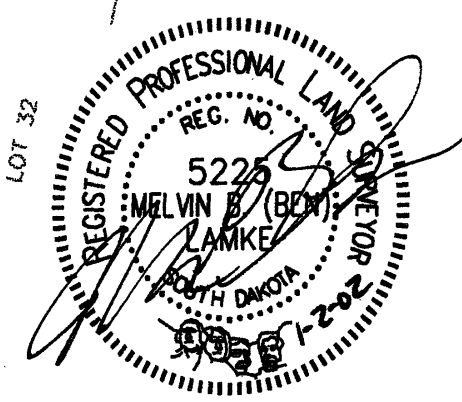
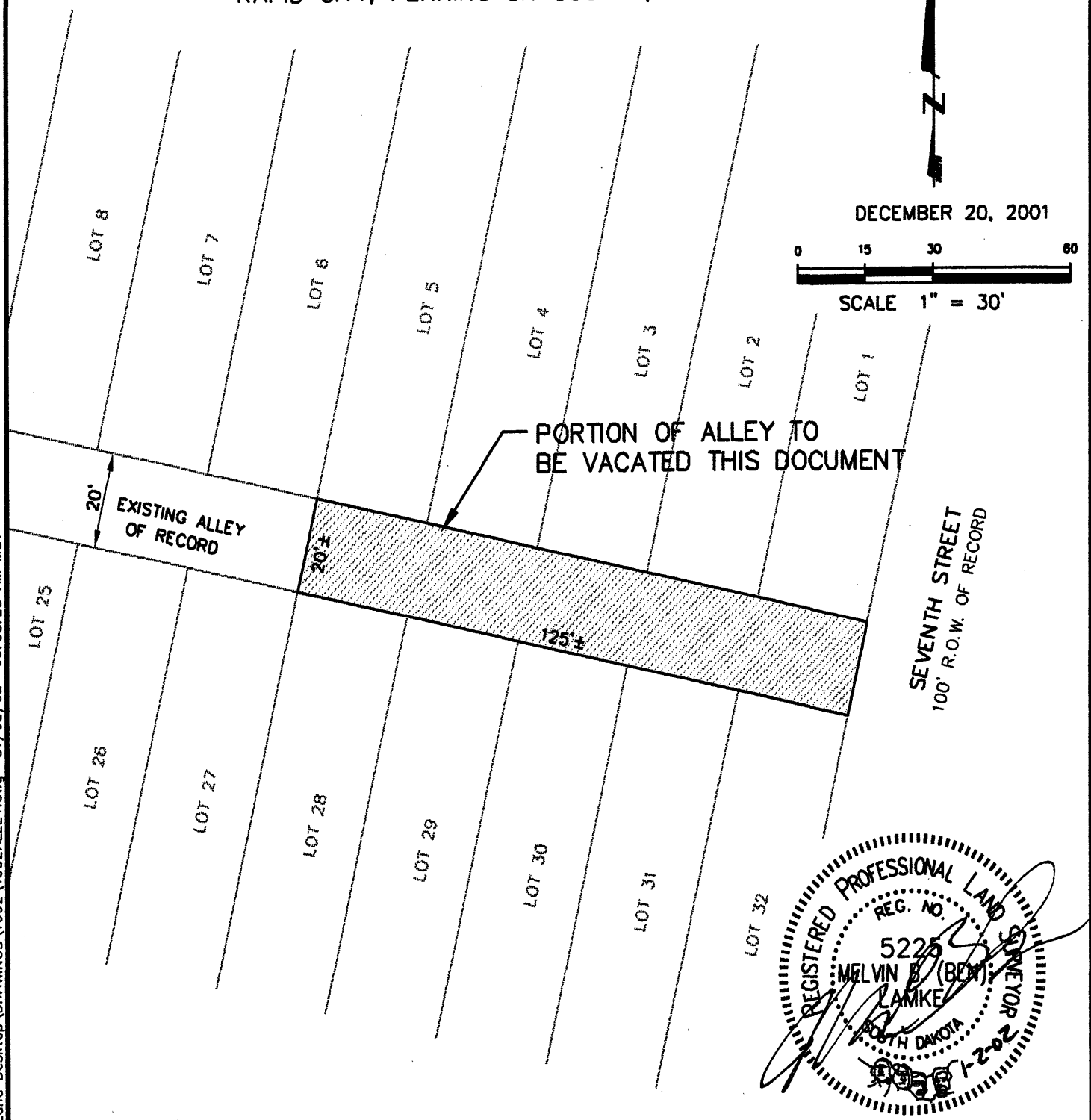


EXHIBIT 'A'  
VACATION OF THAT PORTION OF THE ALLEY ADJACENT  
TO LOTS 1 - 5 AND LOTS 28 - 32 OF BLOCK 103  
ORIGINAL TOWN OF RAPID CITY

02VR001

LOCATED IN THE NW¼ OF THE NW¼  
SECTION 1, T1N, R7E, BHM  
RAPID CITY, PENNINGTON COUNTY, SOUTH DAKOTA



Renner & Sperlich Engineering Co.

616 Sixth St. • Rapid City, SD 57701 • 605/342-1191  
FAX: 605/342-1405 • E-MAIL: RSEC@RAPIDNET.COM

C:\Program Files\Land Desktop\DRAWINGS\1692\1692ALLEY.dwg 01/02/02 09:08:28 AM MST

DMM