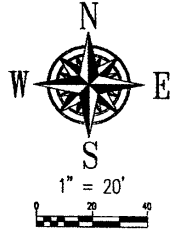


02UR001

RECEIVED

DEC 28 2001

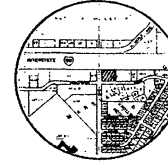
Rapid City
Planning Department



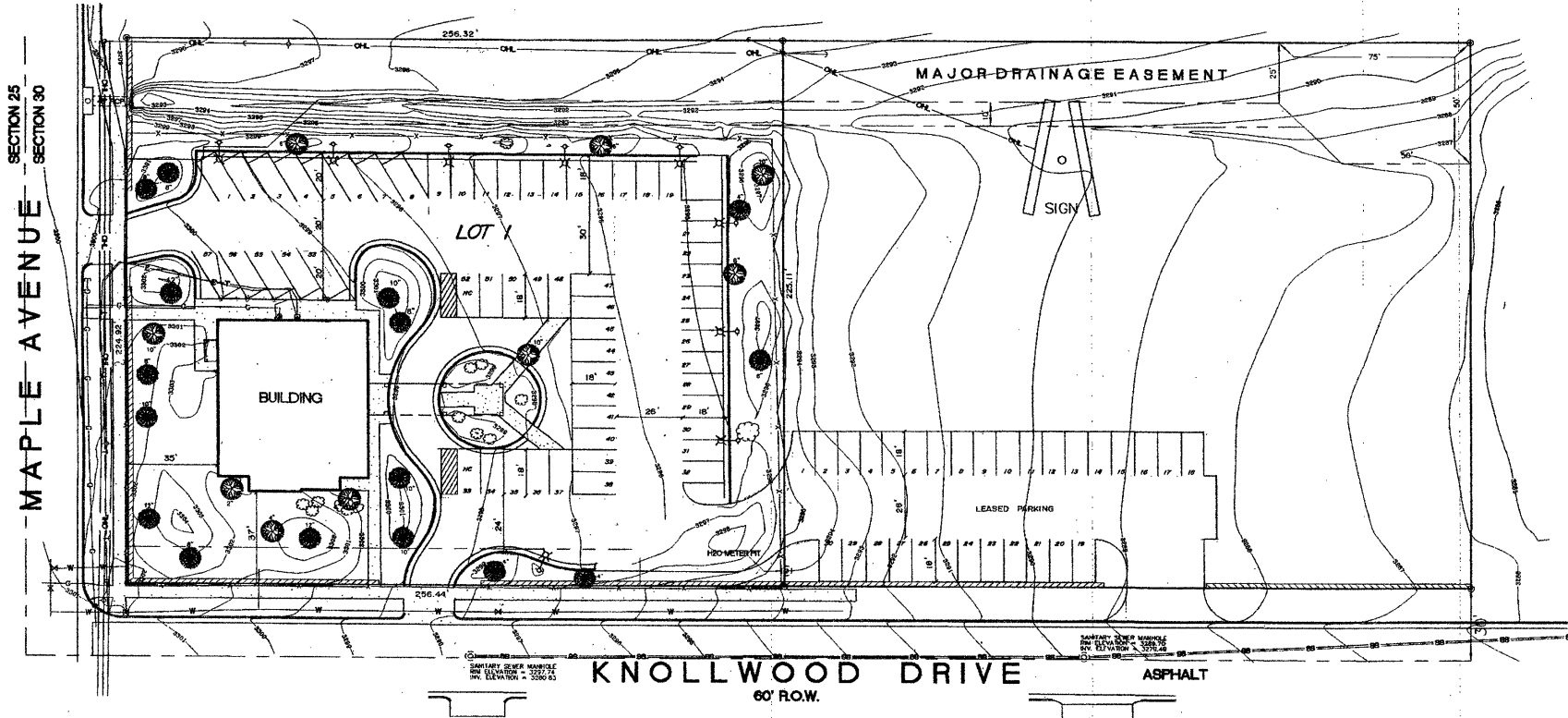
LANDSCAPE REQUIREMENTS

Lot Area	57,673 sf
Building Area	3,992 sf
Required Points:	53,681
Existing Landscaping:	
Grass - 3,278 sq	32,780
Trees - Large - 10 @ 2,000/ea	20,000
Trees - Medium - 6 @ 1,000/ea	6,000
Trees - Small - 10 @ 500/ea	5,000
Shrubs - 13 @ 250/ea	3,250
Total Existing Points:	67,030

VICINITY MAP
(NO SCALE)



INTERSTATE 90 R.O.W.



SECTION 25
SECTION 30
MAPLE AVENUE

SANITARY SEWER MANHOLE
INV. ELEVATION = 3226.61

KNOLLWOOD DRIVE

60' R.O.W.

SANITARY SEWER MANHOLE
INV. ELEVATION = 3226.61

ASPHALT

PROJECT NO. 01-06-03
 1035 MAIN STREET, P.O. BOX 8154
 RAPID CITY, SOUTH DAKOTA 57109
 (605) 346-5351 FAX (605) 347-1172

DESIGNED BY: SWP
 DATE: 12/20/01
 CHECKED BY: WF

FISK LAND SURVEYING
 AND CONSULTING ENGINEERS, INC.

BOUNDARY SURVEY AND TOPOGRAPHIC MAP - LAYOUT
 LOTS 1 AND 2 OF LOT K2-C OF MARSHALL HEIGHTS TRACT
 SW 1/4 OF SECTION 30, T2N, R8E, BHM, RAPID CITY,
 PENNINGTON COUNTY, SOUTH DAKOTA