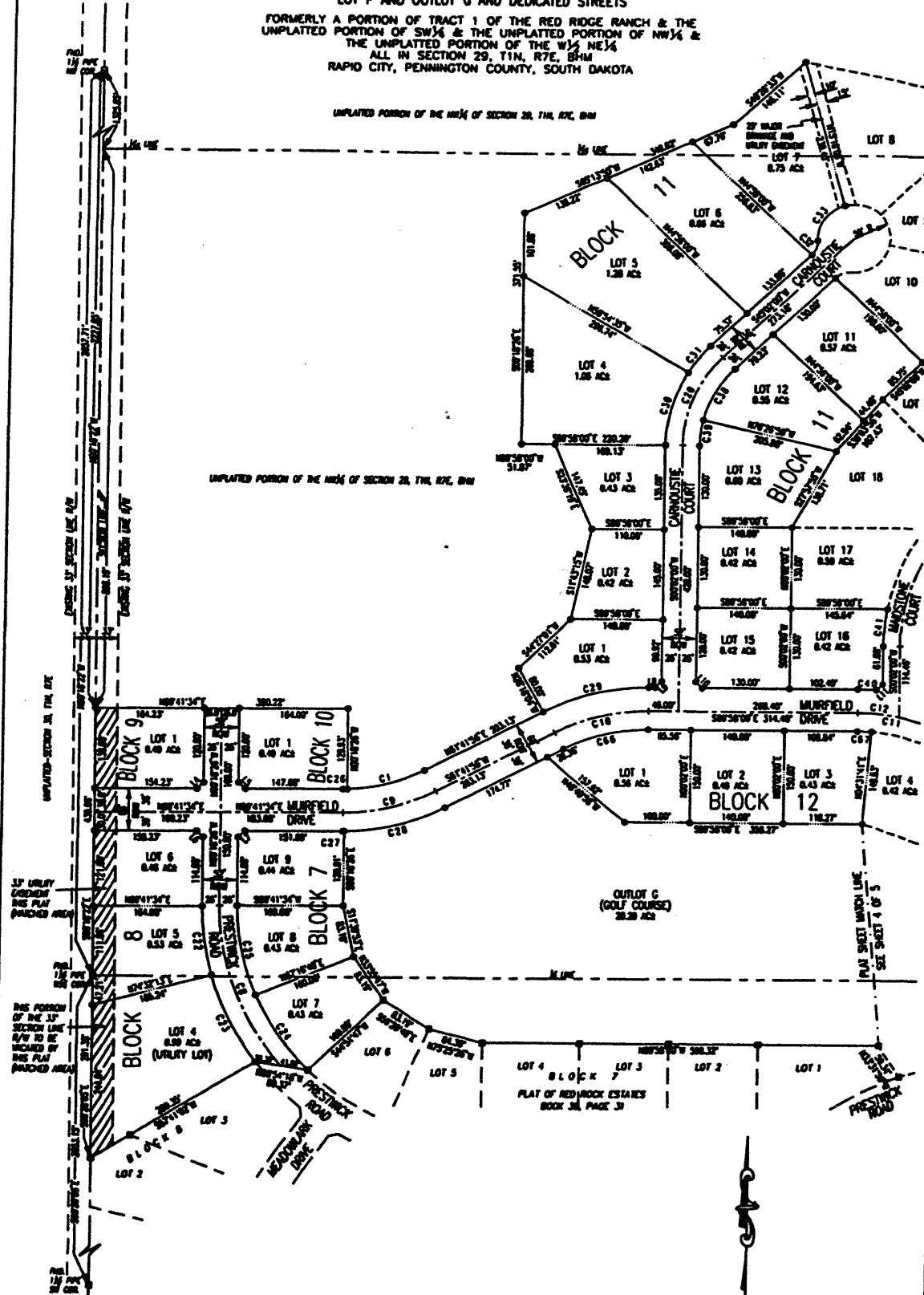


INCLUDING LOTS 7 THRU 9, BLOCK 7 AND LOTS 4 THRU 6, BLOCK 8 AND LOT 1, BLOCK 9 AND LOT 1, BLOCK 10 AND LOTS 1 THRU 38, BLOCK 11 AND LOTS 1 THRU 13, BLOCK 12 AND LOTS 1 THRU 3, BLOCK 13 AND LOTS 1 THRU 6, BLOCK 14 AND LOT P AND OUTLOT G AND DEDICATED STREETS

FORMERLY A PORTION OF TRACT 1 OF THE RED RIDGE RANCH & THE UNPLATTED PORTION OF SW 1/4 & THE UNPLATTED PORTION OF NW 1/4 & THE UNPLATTED PORTION OF THE W 1/4 NE 1/4 ALL IN SECTION 29, T1N, R7E, B1M RAPID CITY, PENNINGTON COUNTY, SOUTH DAKOTA

UNPLATTED PORTION OF THE NW 1/4 OF SECTION 29, T1N, R7E, B1M

UNPLATTED PORTION OF THE NW 1/4 OF SECTION 29, T1N, R7E, B1M



PREPARED FOR:  
DREAM DESIGN INTERNATIONAL, INC.  
3202 WEST MAIN STREET SUITE D  
RAPID CITY, SD 57701  
(605) 348-0838

PREPARED BY:  
**ARLETH & ASSOCIATES**  
382 MAIN STREET  
DEADWOOD, SD 57732  
605-678-1637

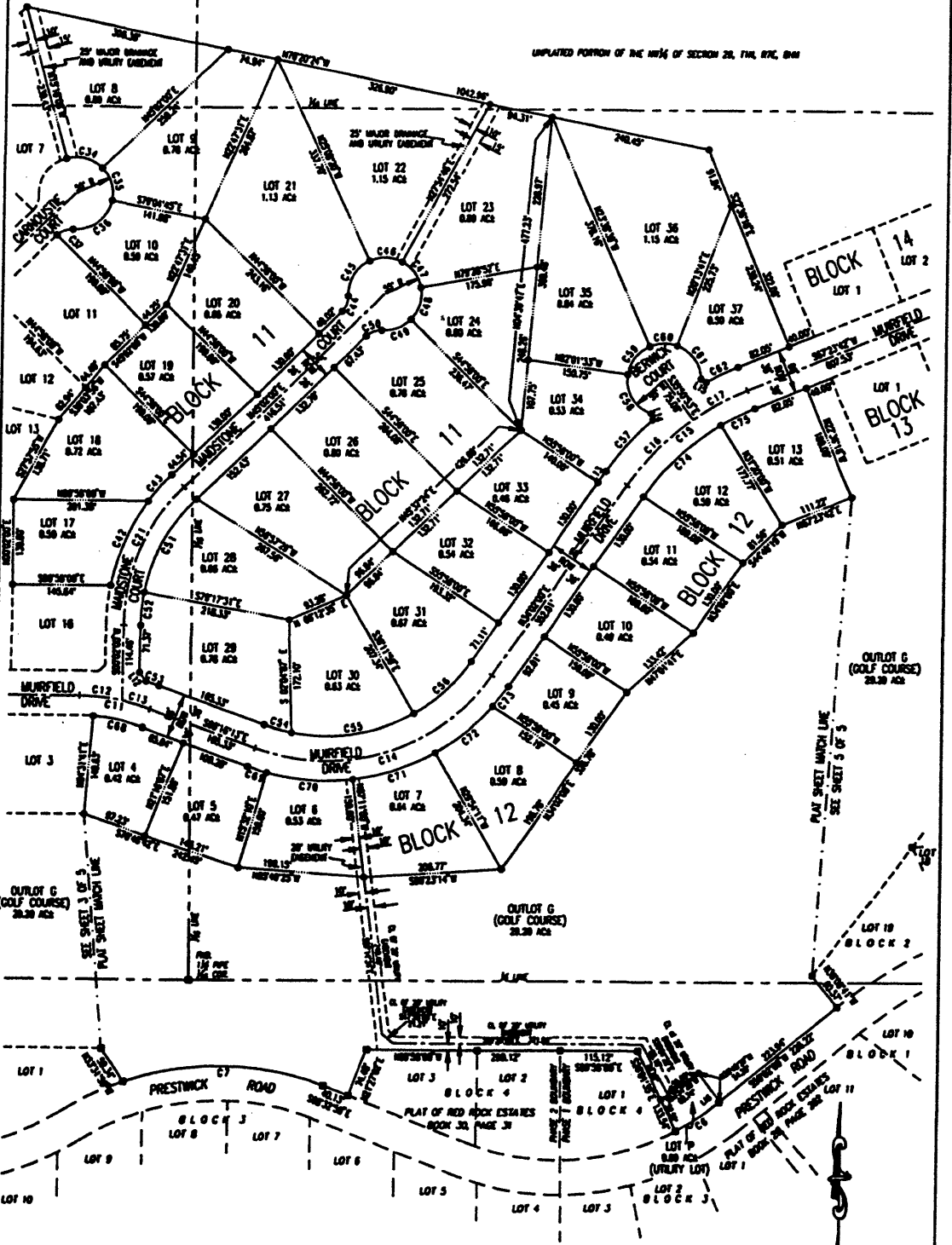
JOB NO. 00-0040.30  
DATE: 11/20/01  
SCALE: 1" = 100'  
DRAWN: VRD

APPROVED: \_\_\_\_\_  
DWD: BRM-PLAT.DWG

INCLUDING LOTS 7 THRU 9, BLOCK 7 AND LOTS 4 THRU 6, BLOCK 8 AND LOT 1, BLOCK 9 AND LOT 1, BLOCK 10 AND LOTS 1 THRU 38, BLOCK 11 AND LOTS 1 THRU 13, BLOCK 12 AND LOTS 1 THRU 5, BLOCK 13 AND LOTS 1 THRU 6, BLOCK 14 AND LOT P AND OUTLOT G AND DEDICATED STREETS

FORMERLY A PORTION OF TRACT 1 OF THE RED RIDGE RANCH & THE UNPLATTED PORTION OF SW 1/4 & THE UNPLATTED PORTION OF NW 1/4 & THE UNPLATTED PORTION OF THE W 1/4 NE 1/4 ALL IN SECTION 29, T14, R7E, 84M RAPID CITY, PENNINGTON COUNTY, SOUTH DAKOTA

UNPLATTED PORTION OF THE NW 1/4 OF SECTION 29, T14, R7E, 84M



PREPARED FOR: DREAM DESIGN INTERNATIONAL, INC. 3202 WEST MAIN STREET SUITE D RAPID CITY, SD 57701 (605) 340-0830



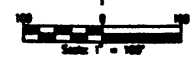
PREPARED BY: ARLETH & ASSOCIATES

302 MAIN STREET DEADWOOD, SD 57732 605-678-1637

JOB NO. 00-0040.30

DATE: 11/20/01 SCALE: 1" = 100' DRAWN: VRR

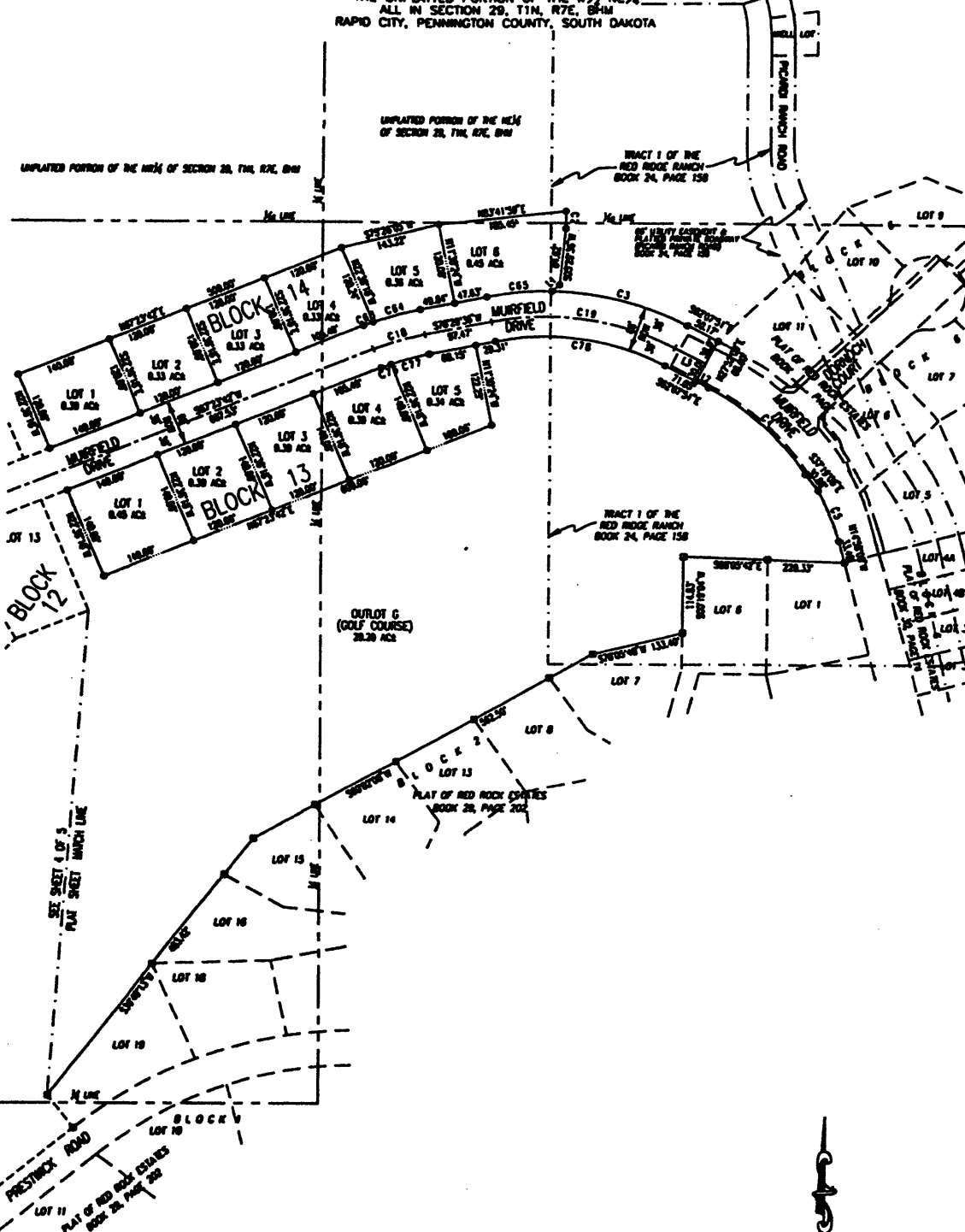
APPROVED: DWG: DRH-PLAT.PPT



# PLAT OF RED ROCK ESTATES

INCLUDING LOTS 7 THRU 9, BLOCK 7 AND LOTS 4 THRU 6, BLOCK 8 AND LOT 1, BLOCK 9 AND LOT 1, BLOCK 10 AND LOTS 1 THRU 30, BLOCK 11 AND LOTS 1 THRU 13, BLOCK 12 AND LOTS 1 THRU 5, BLOCK 13 AND LOTS 1 THRU 6, BLOCK 14 AND LOT P AND OUTLOT G AND DEDICATED STREETS

FORMERLY A PORTION OF TRACT 1 OF THE RED RIDGE RANCH & THE UNPLATTED PORTION OF SW 1/4 & THE UNPLATTED PORTION OF NW 1/4 & THE UNPLATTED PORTION OF THE W 1/2 NE 1/4 ALL IN SECTION 29, T11N, R7E, B11M RAPID CITY, PENNINGTON COUNTY, SOUTH DAKOTA



PREPARED FOR:  
DREAM DESIGN INTERNATIONAL, INC.  
3202 WEST MAIN STREET SUITE 0  
RAPID CITY, SD 57701  
(605) 348-0836



**PREPARED BY:**  
**ARLETH & ASSOCIATES**

382 MAIN STREET  
DEADWOOD, SD 57732  
605-678-1837

JOB NO. 88-0040.30

DATE: 11/28/91  
SCALE: 1" = 100'  
DRAWN: VRS

APPROVED: \_\_\_\_\_  
DWS: RRR-PLAT.P55

INCLUDING LOTS 7 THRU 9, BLOCK 7 AND LOTS 4 THRU 6, BLOCK 8 AND LOT 1, BLOCK 9 AND LOT 1, BLOCK 10 AND LOTS 1 THRU 3B, BLOCK 11 AND LOTS 1 THRU 13, BLOCK 12 AND LOTS 1 THRU 5, BLOCK 13 AND LOTS 1 THRU 6, BLOCK 14 AND LOT P AND OUTLOT G AND DEDICATED STREETS

FORMERLY A PORTION OF TRACT 1 OF THE RED RIDGE RANCH & THE UNPLATTED PORTION OF SW 1/4 & THE UNPLATTED PORTION OF NW 1/4 & THE UNPLATTED PORTION OF THE W 1/2 NE 1/4 ALL IN SECTION 29, T1N, R7E, B1M RAPID CITY, PENNINGTON COUNTY, SOUTH DAKOTA

LEGEND

- DENOTES SET 5/8" REBAR WITH SURVEY CAP MARKED "RLS 3077"
○ DENOTES FOUND SURVEY MONUMENT
BARS OF BEARING: PER PREVIOUSLY RECORDED PLAT(S).

NOTES:

- 1. MINOR DRAINAGE AND UTILITY EASEMENTS ARE HEREBY ESTABLISHED 6' WIDE ON THE INTERIOR SIDE OF ALL LOT LINES AND EXTERIOR OF RIGHT-OF-WAY. (EXCEPT WHERE MAJOR DRAINAGE EASEMENTS ARE LOCATED)
2. TOTAL PLATTED AREA: 78.59 ACRES; LOTS: 40.84 ACRES. PUBLIC RIGHT-OF-WAY: 8.55 ACRES. DEDICATED FOR PUBLIC USE BY THIS PLAT. OUTLOT G (GOLF COURSE): 29.20 ACRES. LOT P IS HEREBY DEDICATED AS "UTILITY LOT" FOR WATER BOOSTER PUMP STATION. LOT A, BLOCK 8 IS HEREBY DEDICATED AS "UTILITY LOT" FOR WATER RESERVOIR SITE.
3. ANY MAJOR DRAINAGE EASEMENT SHOWN HEREON SHALL BE KEPT FREE OF ALL OBSTRUCTIONS INCLUDING BUT NOT LIMITED TO BUILDINGS, WALLS, FENCES, HEDGES, TREES, AND SHRUBS. THESE EASEMENTS GRANT TO ALL PUBLIC AUTHORITIES THE RIGHT TO CONSTRUCT, OPERATE, MAINTAIN, INSPECT AND REPAIR SUCH IMPROVEMENTS AND STRUCTURES AS IT DEEMS EXPEDIENT TO FACILITATE DRAINAGE FROM ANY SOURCE.
4. NON-ACCESS EASEMENTS ARE HEREBY ESTABLISHED ALONG THE FIRST FIFTY FEET OF CORNER LOTS OR AS INDICATED HEREON.
5. ALL BUILDERS SHALL MAINTAIN EXISTING DRAINAGE FACILITIES IN ACCORDANCE TO APPROVED CONSTRUCTION PLANS. (RAPID CITY ENR. DIV. REQUESTED NOTE)

SHORT COURSE TABLE

Table with 3 columns: NUMBER, BEARING, DISTANCE. Lists course data for lots 11 through 116.

CURVE TABLE

Table with 7 columns: NUMBER, BEARS, DELTA ANGLE, ARC LENGTH, TANGENT, CHORD BEARING, CHORD LENGTH. Lists curve data for lots 11 through 116.

PREPARED FOR: ARLETH DESIGN INTERNATIONAL, INC. 1330 WEST MAIN STREET, SUITE 0 RAPID CITY, SD 57701 (605) 348-0636



PREPARED BY: ARLETH & ASSOCIATES

302 MAIN STREET DEADWOOD, SD 57732 605-678-1637

JOB NO. 00-0046.30

DATE: 11/20/01 SCALE: 1" = 100' DRAWN: WRD

APPROVED:

005: BWH-PLAT.PDF