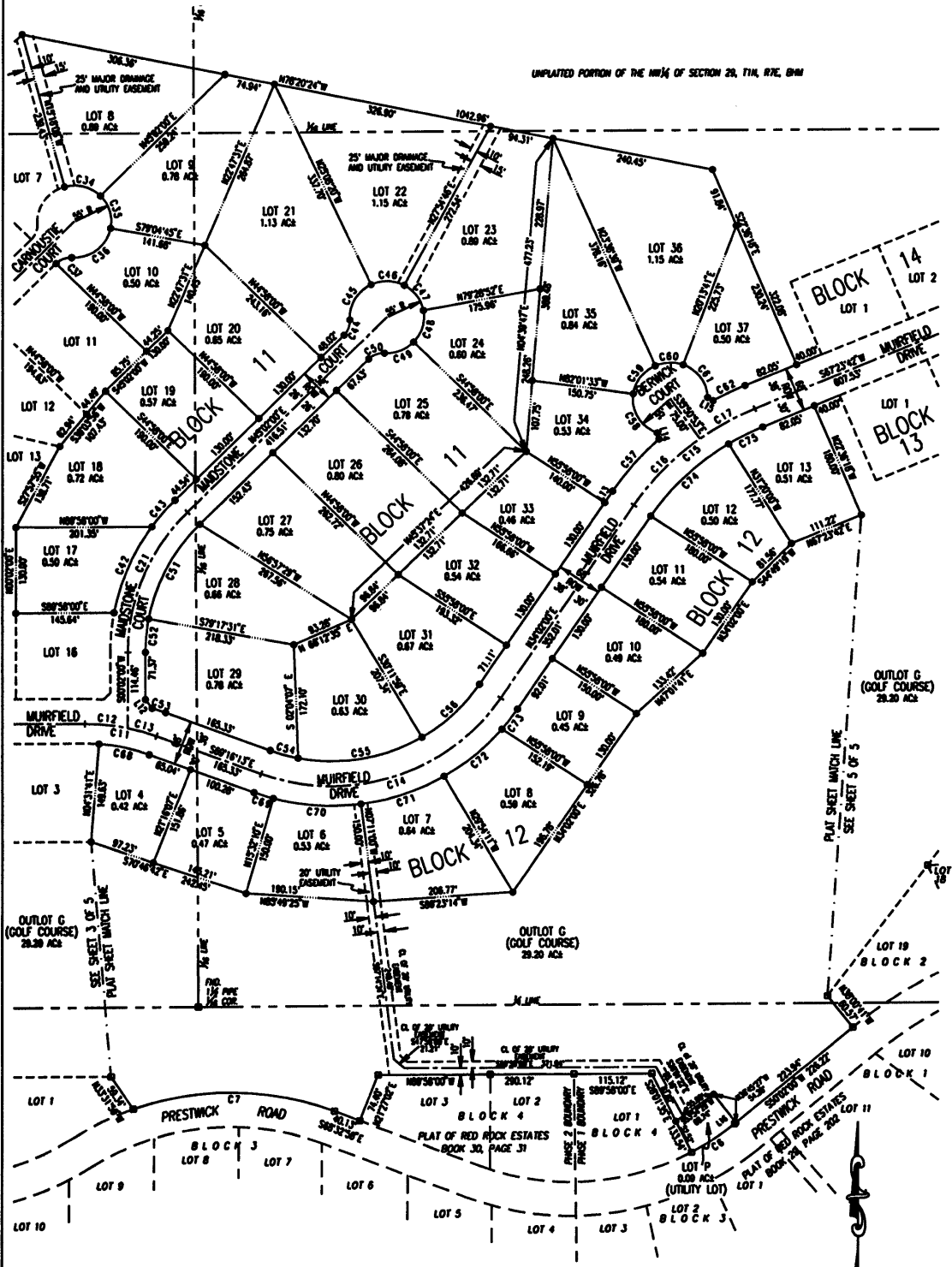


PLAT OF RED ROCK ESTATES

INCLUDING LOTS 7 THRU 9, BLOCK 7 AND LOTS 4 THRU 6, BLOCK 10 AND LOTS 1 THRU 38, BLOCK 11 AND LOTS 1 THRU 13, BLOCK 12 AND LOTS 1 THRU 5, BLOCK 13 AND LOTS 1 THRU 6, BLOCK 14 AND LOT P AND OUTLOT G AND DEDICATED STREETS

FORMERLY A PORTION OF TRACT 1 OF THE RED RIDGE RANCH & THE UNPLATTED PORTION OF SW $\frac{1}{4}$ & THE UNPLATTED PORTION OF NW $\frac{1}{4}$ & THE UNPLATTED PORTION OF THE W $\frac{1}{2}$ NE $\frac{1}{4}$ ALL IN SECTION 29, T1N, R7E, BHM
RAPID CITY, PENNINGTON COUNTY, SOUTH DAKOTA

01PL122



PREPARED FOR:
DREAM DESIGN INTERNATIONAL, INC.
3202 WEST MAIN STREET SUITE D
RAPID CITY, SD 57701
(605) 348-0536



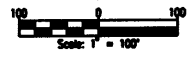
PREPARED BY:
ARLETH & ASSOCIATES

382 MAIN STREET
DEADWOOD, SD 57732
605-678-1637

JOB NO.
98-0040.30

DATE: 11/20/01
SCALE: 1" = 100'
DRAWN: WRD

APPROVED:
DWC: BRUII-PLAT.DWG



PLAT OF RED ROCK ESTATES

INCLUDING LOTS 7 THRU 9, BLOCK 7 AND LOTS 4 THRU 6, 10 AND LOTS 1 THRU 38, BLOCK 11 AND LOTS 1 THRU 13, BLOCK 12 AND LOTS 1 THRU 5, BLOCK 13 AND LOTS 1 THRU 6, BLOCK 14 AND LOT P AND OUTLOT G AND DEDICATED STREETS

FORMERLY A PORTION OF TRACT 1 OF THE RED RIDGE RANCH & THE UNPLATTED PORTION OF SW 1/4 & THE UNPLATTED PORTION OF NW 1/4 & THE UNPLATTED PORTION OF THE W 1/4 NE 1/4 ALL IN SECTION 29, T11N, R7E, B11M RAPID CITY, PENNINGTON COUNTY, SOUTH DAKOTA

01PL122

RECEIVED
JAN 15 2002
Rapid City
Planning Department

UNPLATTED PORTION OF THE NW 1/4 OF SECTION 29, T11N, R7E, B11M

UNPLATTED PORTION OF THE NW 1/4 OF SECTION 29, T11N, R7E, B11M

UNPLATTED-SECTION 29, T11N, R7E

UNPLATTED PORTION OF THE NW 1/4 OF SECTION 29, T11N, R7E, B11M

PLAT OF RED ROCK ESTATES BOOK 30, PAGE 31

PLAT SHEET MATCH LINE SEE SHEET 4 OF 5

PREPARED FOR:
DREAM DESIGN INTERNATIONAL, INC.
3202 WEST MAIN STREET SUITE D
RAPID CITY, SD 57701
(605) 348-0538

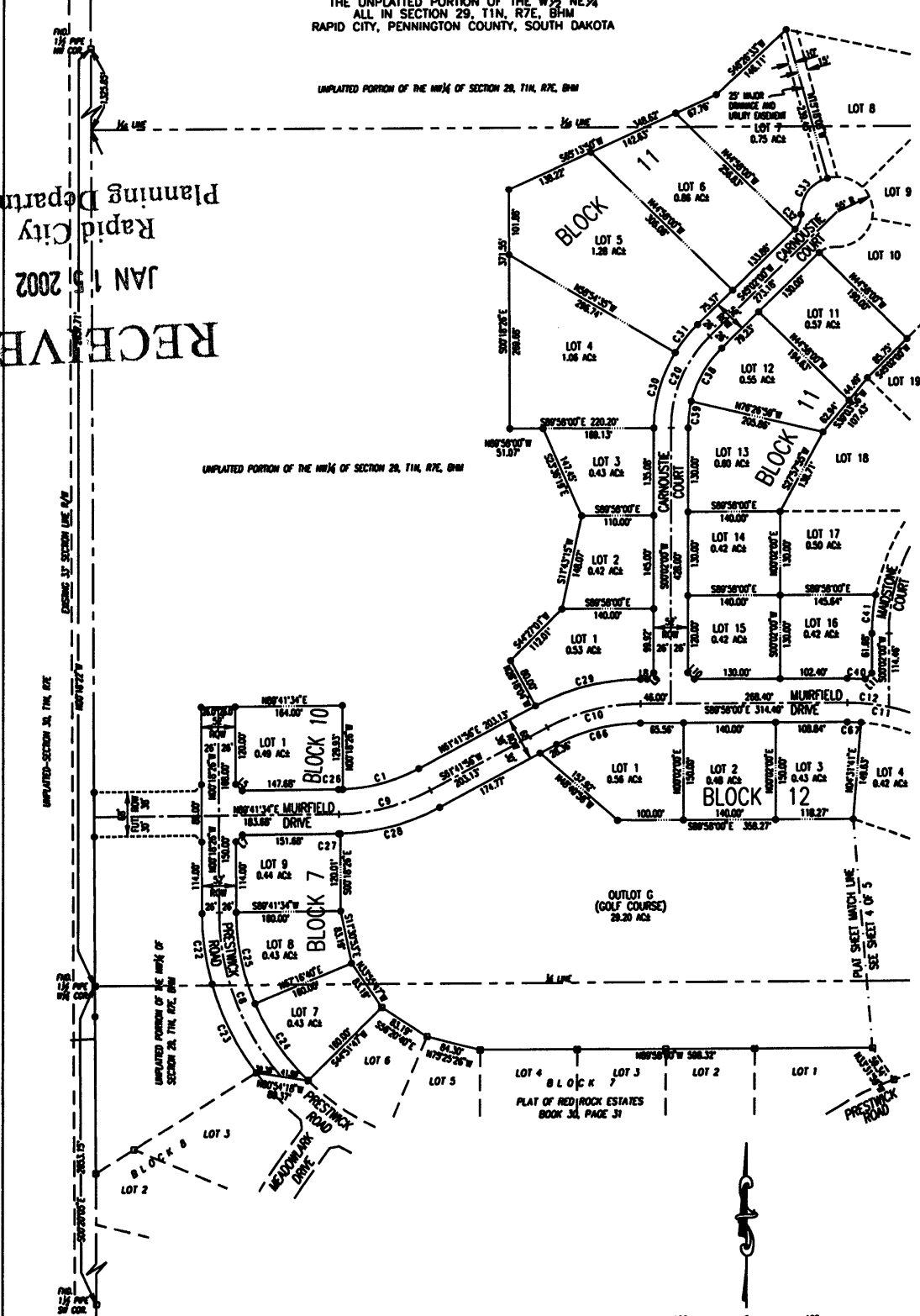
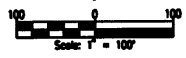
PREPARED BY:
ARLETH & ASSOCIATES

382 MAIN STREET
DEADWOOD, SD 57732
605-578-1837

JOB NO.
99-0040.30

DATE: 11/30/01
SCALE: 1" = 100'
DRAWN: WRD

APPROVED:
DWC: BRUII-PLAT.DWG

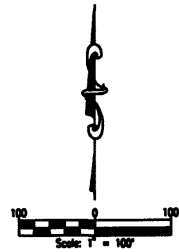
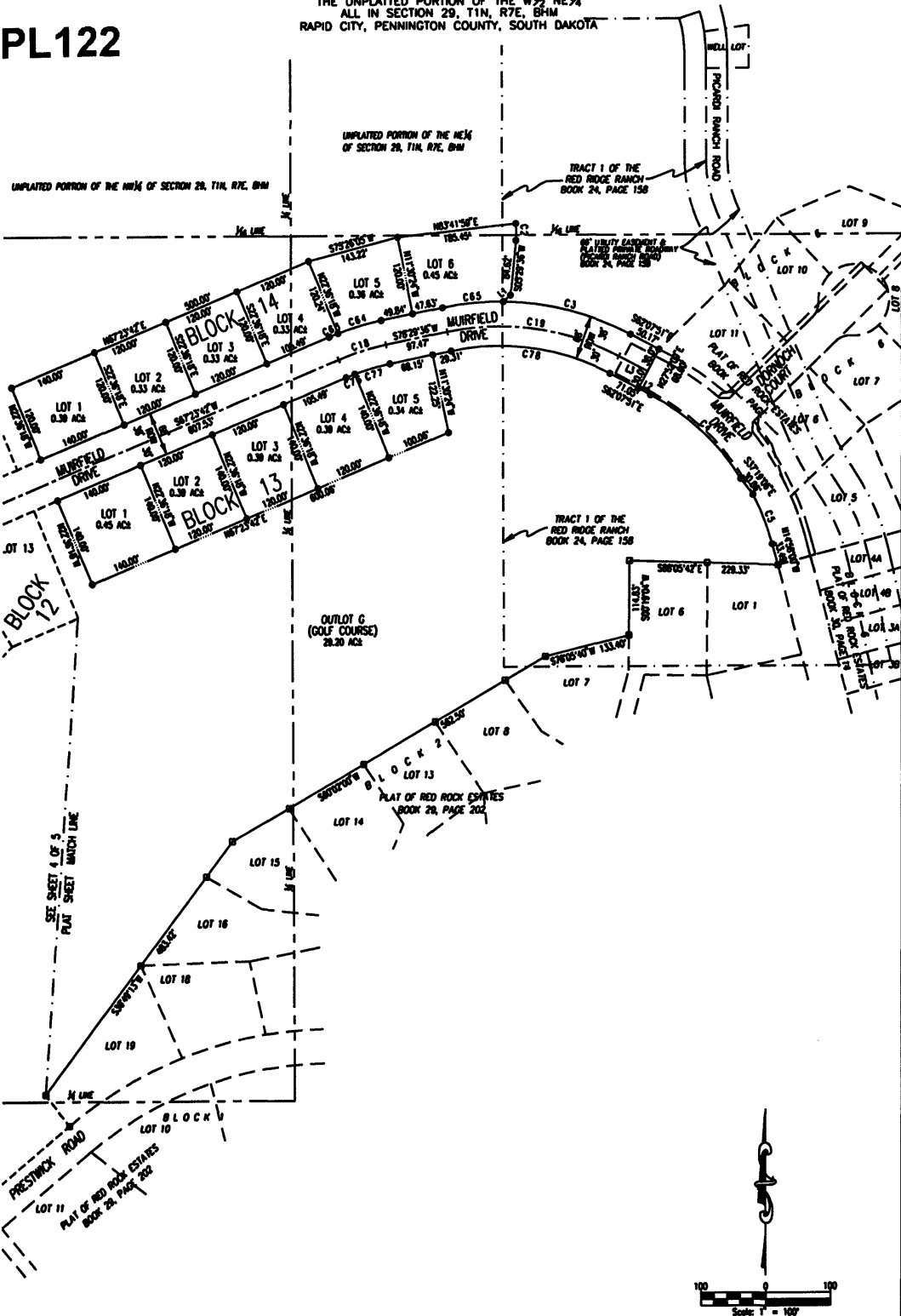


PLAT OF RED ROCK ESTATES

INCLUDING LOTS 7 THRU 9, BLOCK 7 AND LOTS 4 THRU 6, BLOCK 10 AND LOTS 1 THRU 38, BLOCK 11 AND LOTS 1 THRU 13, BLOCK 12 AND LOTS 1 THRU 5, BLOCK 13 AND LOTS 1 THRU 6, BLOCK 14 AND LOT P AND OUTLOT G AND DEDICATED STREETS

FORMERLY A PORTION OF TRACT 1 OF THE RED RIDGE RANCH & THE UNPLATTED PORTION OF SW $\frac{1}{4}$ & THE UNPLATTED PORTION OF NW $\frac{1}{4}$ & THE UNPLATTED PORTION OF THE W $\frac{1}{2}$ NE $\frac{1}{4}$ ALL IN SECTION 29, T1N, R7E, B1M
RAPID CITY, PENNINGTON COUNTY, SOUTH DAKOTA

01PL122



PREPARED FOR:
DREAM DESIGN INTERNATIONAL, INC.
3202 WEST MAIN STREET SUITE 0
RAPID CITY, SD 57701
(605) 348-0538



PREPARED BY:
ARLETH & ASSOCIATES

382 MAIN STREET
DEADWOOD, SD 57732
605-678-1637

JOB NO.
98-0040.30

DATE: 11/30/01
SCALE: 1" = 100'
DRAWN: WRD

APPROVED: _____
DWC: RR/II-PLAT.DWG