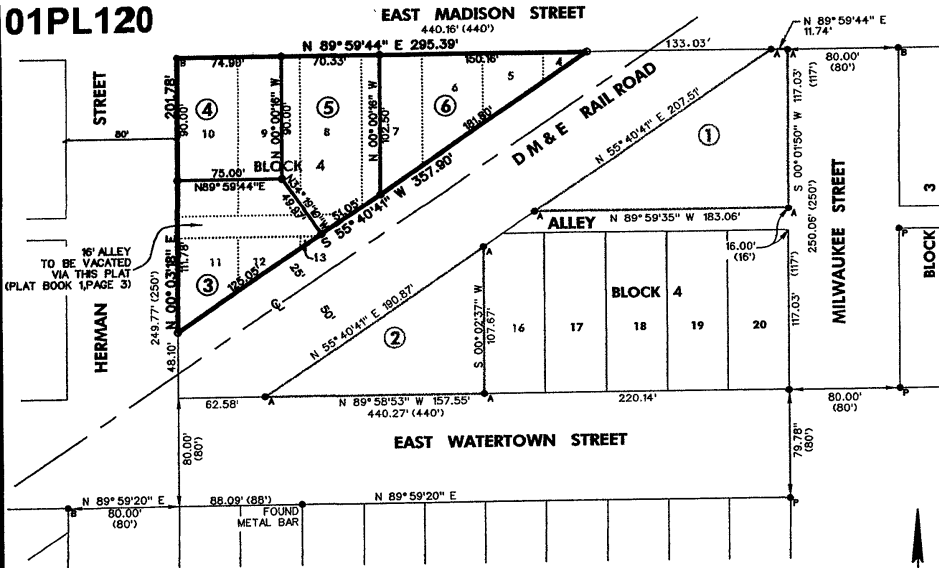


PLAT OF LOTS 3 THRU 6, HABITAT SUBDIVISION

FORMERLY PORTIONS OF LOTS 4 THRU 8, LOT 9, LOT 10,
PORTIONS OF LOTS 11 THRU 13, AND A PORTION OF THE ALLEY, BLOCK 4,
SCHNASSE ADDITION TO THE CITY OF RAPID CITY
LOCATED IN THE NW1/4 OF THE SW1/4 OF SECTION 31, T2N, R8E, B.J.H.M.
RAPID CITY, PENNINGTON COUNTY, SOUTH DAKOTA

01PL120



NOTES:

- THE BASIS OF BEARING FOR THIS PLAT IS $N89^{\circ}59'44''E$ BETWEEN A FOUND BOLT AT THE NORTHWEST CORNER OF BLOCK 4, SCHNASSE ADDITION, TO A FOUND BOLT AT THE NORTHWEST CORNER OF BLOCK 3, SCHNASSE ADDITION, AS SHOWN HEREON.
- PORTIONS OF LOTS 4-8, LOTS 9-10, PORTIONS OF LOTS 11-13, AND A PORTION OF THE ALLEY, BLOCK 4, SCHNASSE ADDITION TO THE CITY OF RAPID CITY ARE HEREBY VACATED AND REPLATED AS SHOWN HEREON.

Plat prepared by
Alliance of Architects and Engineers
706 West Boulevard
Rapid City, South Dakota
Phone: 605-342-9470

