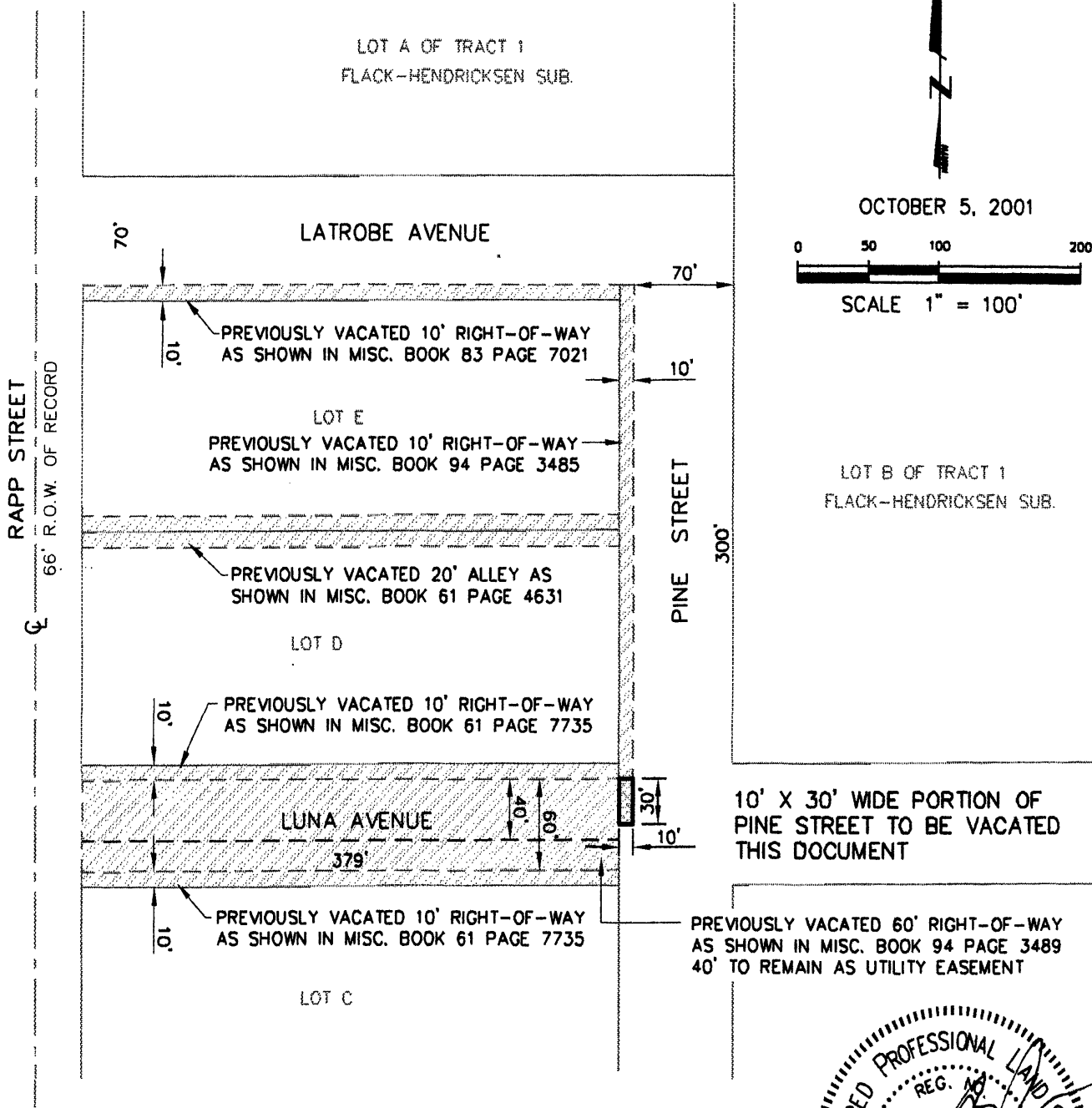


EXHIBIT 'A'

VACATION OF RIGHT-OF-WAY A PORTION OF PINE STREET

LOCATED IN THE NW1/4 OF THE SE1/4
SECTION 30, T2N, R8E, BHM
RAPID CITY, PENNINGTON COUNTY, SOUTH DAKOTA



Renner & Sperlich Engineering Co.

616 Sixth St. • Rapid City, SD 57701 • 605/342-1191
FAX: 605/342-1405 • E-MAIL: RSEC@RAPIDNET.COM

