


PLAT OF LOT A REVISED OF BLOCK 2, AND LOTS 1R, 6R, AND 7R OF BLOCK 3, SPRING CANYON ESTATES

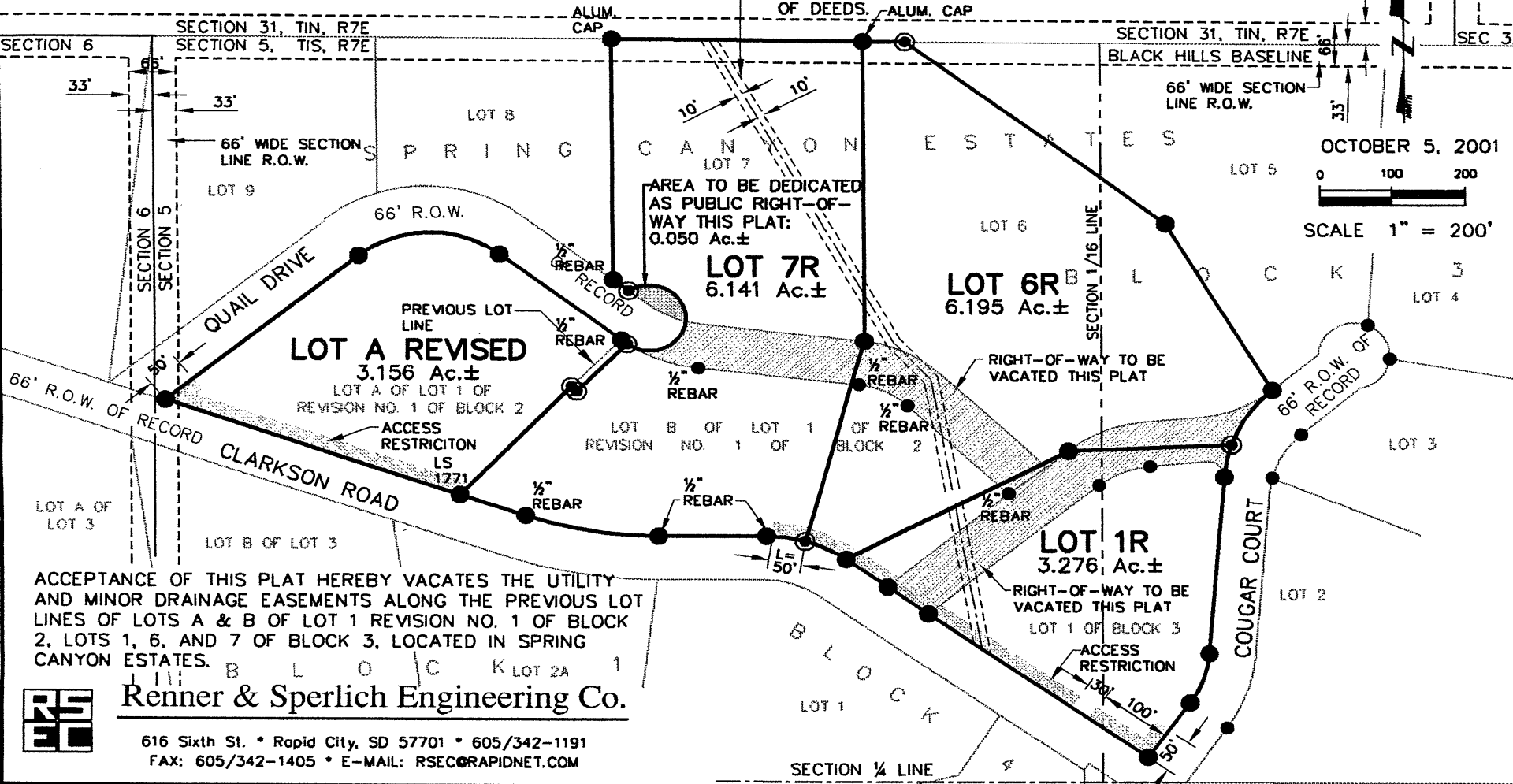
(formerly Lots A & B of Lot 1 Revision No. 1 of Block 2, Lots 1, 6, and 7 of Block 3, and portions of the previously dedicated public right-of-ways to be vacated this plat, All located in Spring Canyon Estates)

LOCATED IN "GOVERNMENT" LOTS 3 AND 4 OF SECTION 5, T1S, R7E, B.H.M.,
PENNINGTON COUNTY, SOUTH DAKOTA

01PL113

: ACCEPTANCE OF THIS PLAT HEREBY VACATES PORTIONS OF THE PREVIOUSLY DEDICATED 66' WIDE PUBLIC RIGHT-OF-WAYS AS SHOWN HEREON.

PRIVATE 20' EASEMENT FOR WATER LINE AND RESERVOIR FOR LOT 1 OF BLOCK 1 OF SPRING CANYON ESTATES AS SHOWN ON THE PLAT FILED MAY 10, 1965, IN THE STEEL FILE IN THE OFFICE OF THE PENNINGTON COUNTY REGISTER OF DEEDS. -ALUM. CAP



ACCEPTANCE OF THIS PLAT HEREBY VACATES THE UTILITY AND MINOR DRAINAGE EASEMENTS ALONG THE PREVIOUS LOT LINES OF LOTS A & B OF LOT 1 REVISION NO. 1 OF BLOCK 2, LOTS 1, 6, AND 7 OF BLOCK 3, LOCATED IN SPRING CANYON ESTATES.

Renner & Sperlich Engineering Co.

616 Sixth St. • Rapid City, SD 57701 • 605/342-1191
FAX: 605/342-1405 • E-MAIL: RSEC@RAPIDNET.COM

