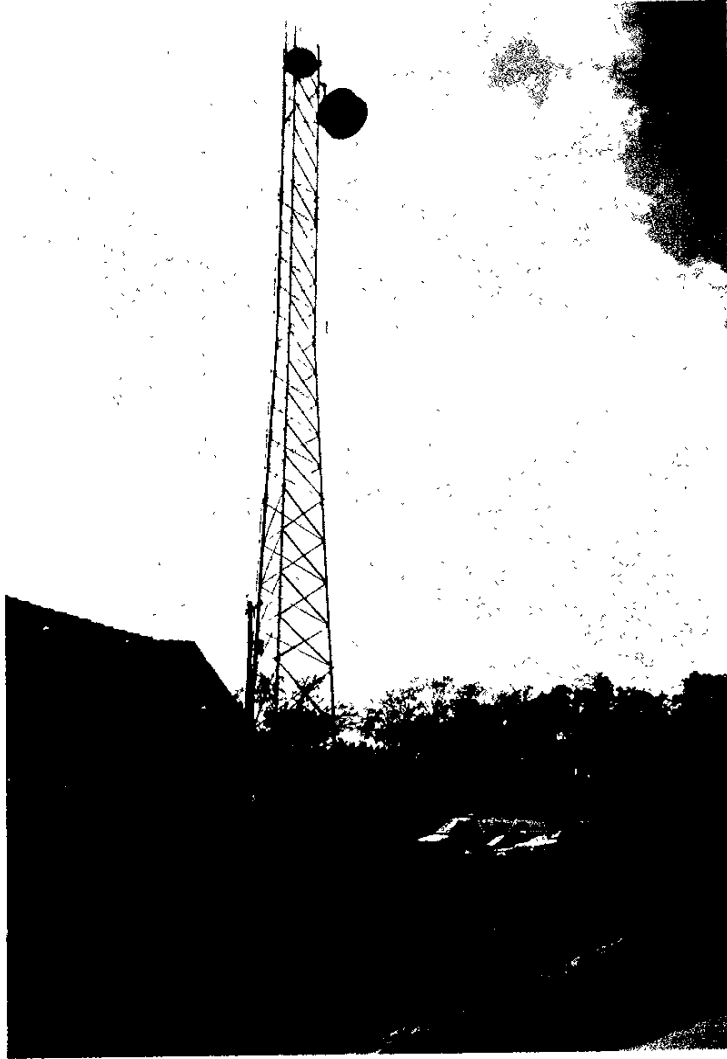


QWEST  
PHOTO SHEET  
RPC-008A



OVERALL AT TOWER

QWEST  
PHOTO SHEET  
RPC-008A



LOOKING AT 120 DEGREES FROM SITE

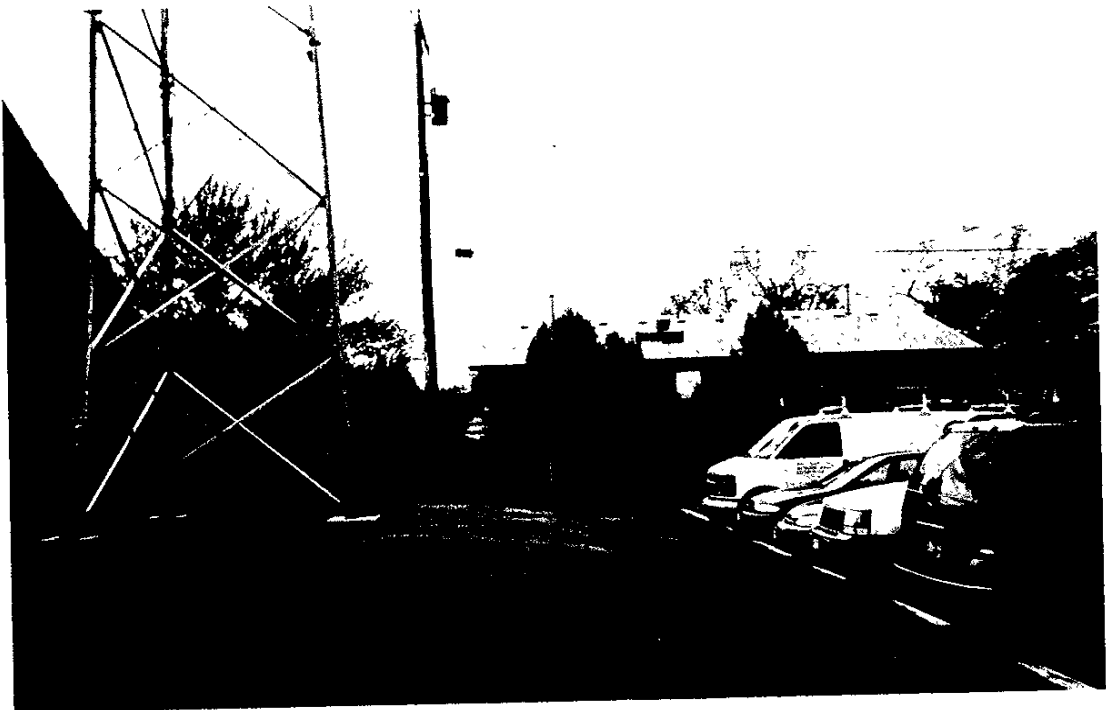


INGRESS / EGRESS

QWEST  
PHOTO SHEET  
RPC-008A

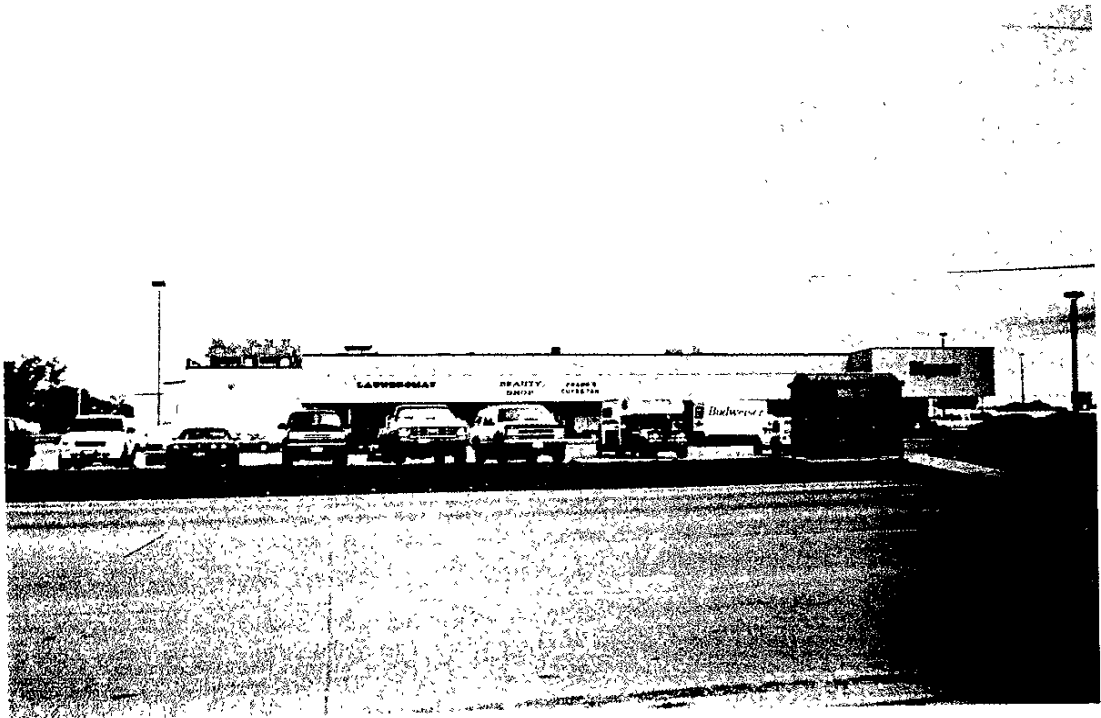


LOOKING SOUTH FROM SITE



LOOKING WEST FROM SITE

QWEST  
PHOTO SHEET  
RPC-008A



LOOKING EAST FROM SITE



LOOKING SOUTHEAST FROM SITE

QWEST  
PHOTO SHEET  
RPC-008A



LOOKING NORTH FROM SITE



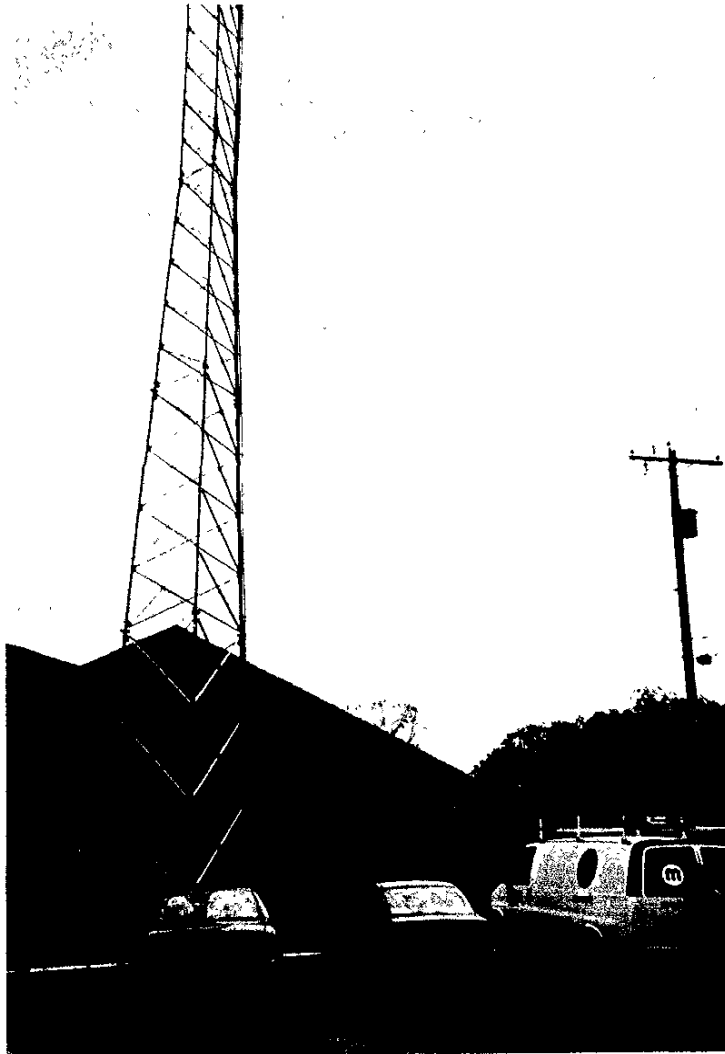
LOOKING NORTHEAST FROM SITE

QWEST  
PHOTO SHEET  
RPC-008A



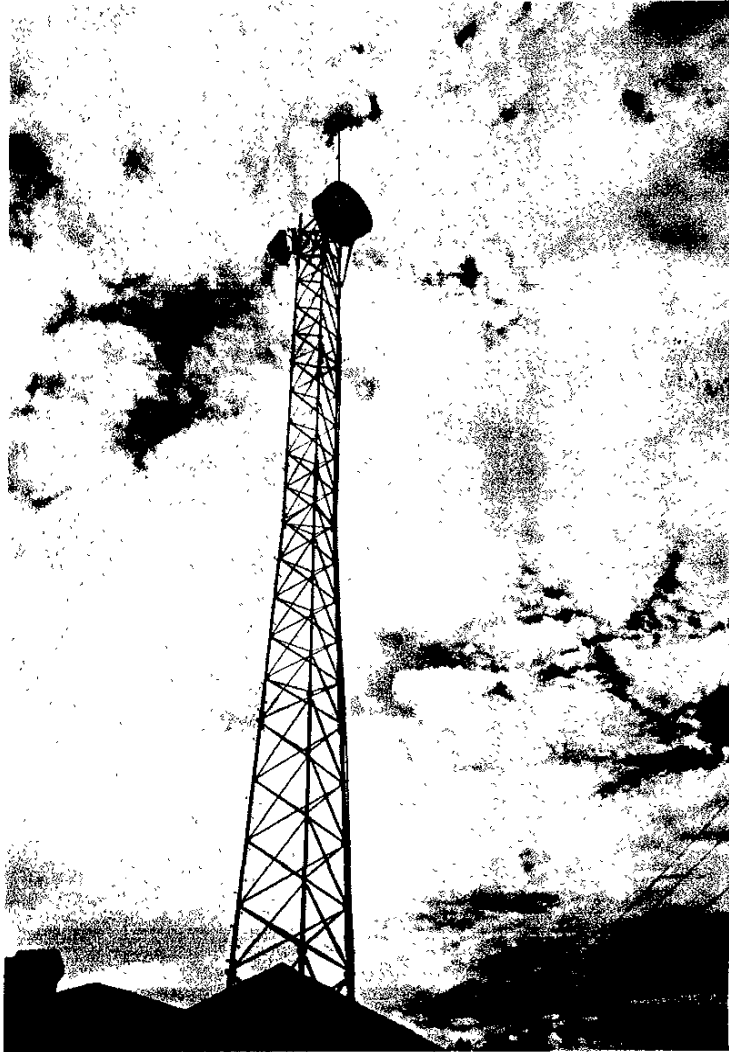
LOOKING WEST AT SITE

QWEST  
PHOTO SHEET  
RPC-008A



LOOKING SOUTH AT BASE OF SITE

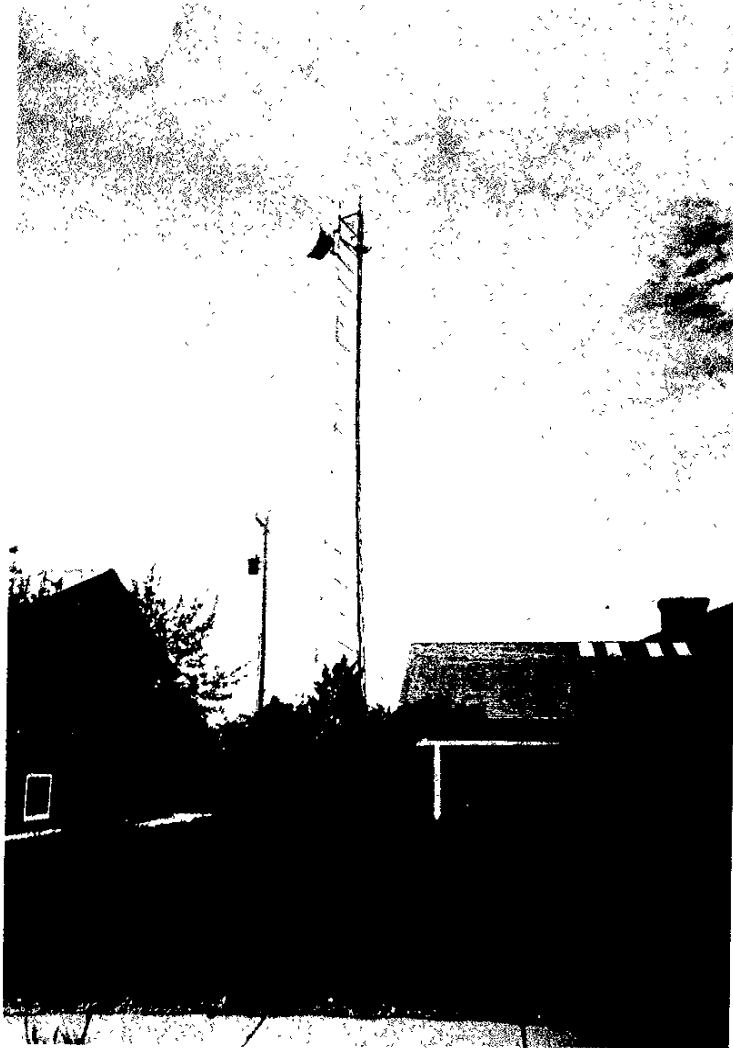
QWEST  
PHOTO SHEET  
RPC-008A



LOOKING SOUTH AT TOP OF SITE

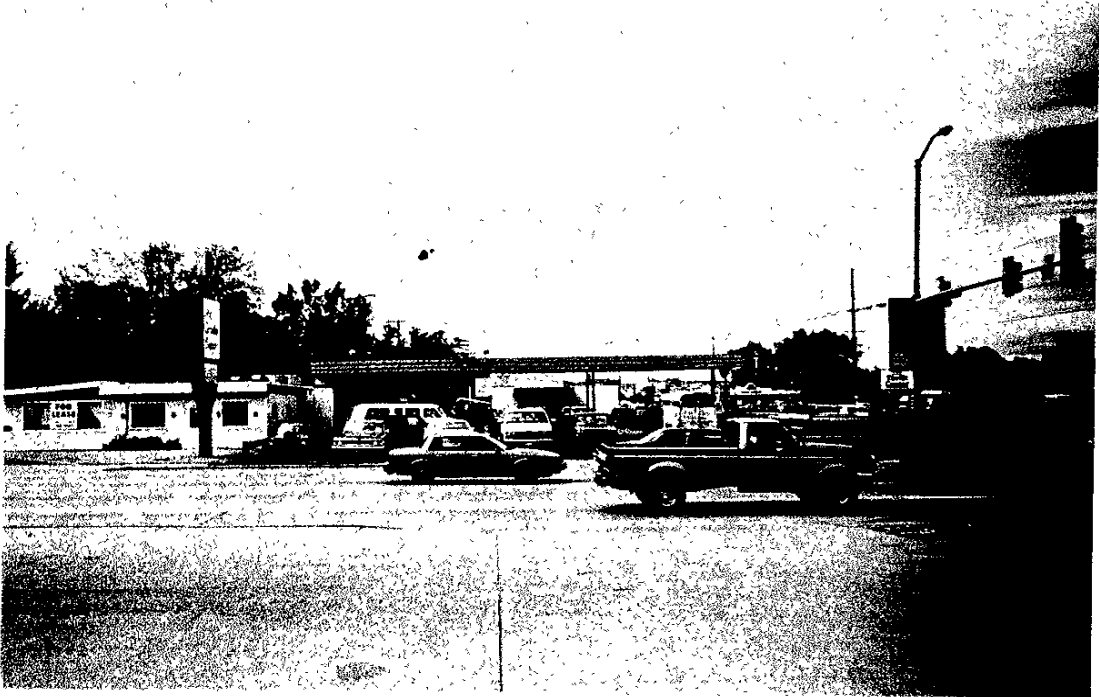


QWEST  
PHOTO SHEET  
RPC-008A

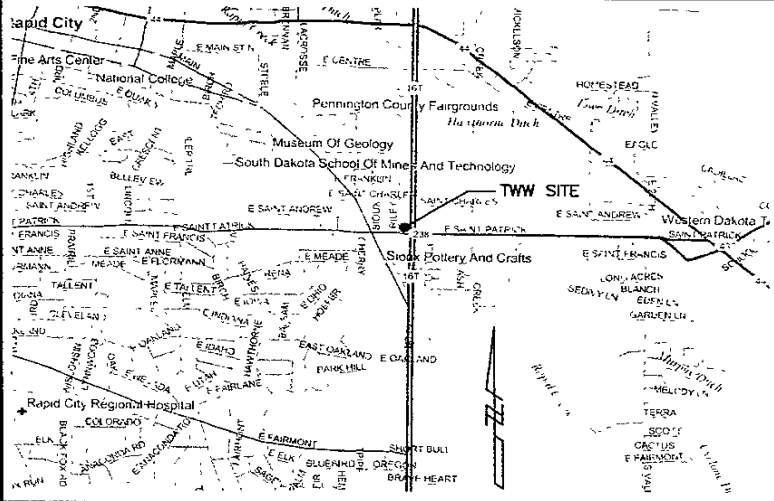


LOOKING EAST AT SITE

QWEST  
PHOTO SHEET  
RPC-008A

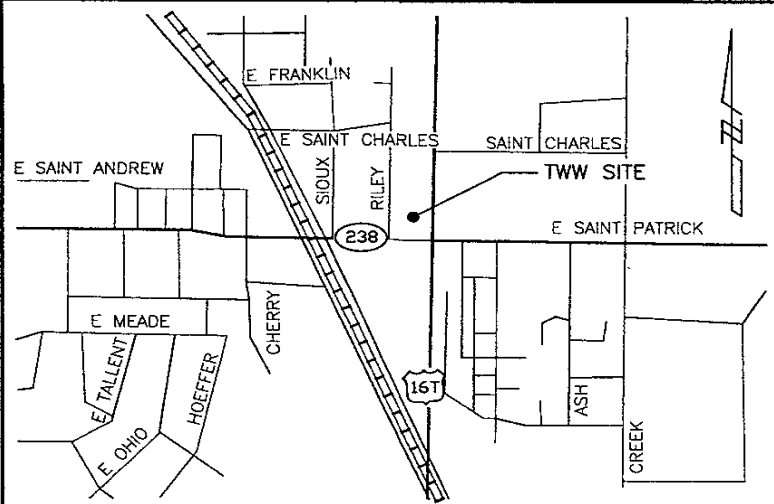


LOOKING NORTH AT SITE



VICINITY MAP

NOT TO SCALE 1



ENLARGED VICINITY MAP

NOT TO SCALE 2

**PROJECT DIRECTORY:**

PROJECT COORDINATOR:  
TETRAGENICS  
E. 12310 MIRABEAU PARKWAY  
SPOKANE, WA 99216  
CONTACT: DON STEVENSON  
TELEPHONE: (509) 979-0769

**SITE NAME:**

RUSHMORE COMMUNICATIONS

**SITE ADDRESS:**

1711 CAMBELL STREET  
RAPID CITY, SD 57701

**OWNERS:**

RUSHMORE ELECTRIC POWER CO-OP  
1715 CAMBELL STREET  
RAPID CITY, SD 57701  
CONTACT: DOYLE STIEFEL (MGR.)  
(605) 342-4759  
24 HR #: (605) 721-4130

**APPLICANT:**

TW WIRELESS, LLC.  
12310 E MIRABEAU PARKWAY  
SPOKANE, WA 99216

TELEPHONE: (509) 340-2046

**GEODETIC COORDINATES:**

LATITUDE: 44°04'08.4"N (NAD 83)  
LONGITUDE: 103°11'32.2"W (NAD 83)  
ELEVATION: 3171.2' (NGVD 88)

**GENERAL NOTES:**

1. ADA COMPLIANCE = FACILITY IS NOT STAFFED AND NOT NORMALLY OCCUPIED.
2. FOR SPECIFICATIONS, SEE ACCOMPANYING TW WIRELESS DOCUMENTS AND TECHNICAL SPECIFICATIONS FOR CONSTRUCTION.

**LEGAL DESCRIPTION:**

TAX ID #: 3806482015  
SEC 6, T1N, R8E, B.H.M.

SEE SHEET A-1 FOR SITE AND ACCESS EASEMENT DESCRIPTIONS

**DRAWINGS:**

DWG	SHEET TITLE
T-1	TITLE SHEET
S-1	SITE SURVEY
S-2	ENLARGED SITE PLAN
A-1	ELEVATION AND LEGAL DESCRIPTION
D-1	CONSTRUCTION DETAILS
D-2	CONSTRUCTION DETAILS CONTINUED
E-1	ELECTRICAL SCHEMATICS
E-2	NOTES AND SCHEDULES
	ELECTRICAL GROUNDING DETAILS

**PROJECT DESCRIPTION:**

THE PROJECT CONSISTS OF THE INSTALLATION AND THE OPERATION OF ANTENNAS AND ASSOCIATED EQUIPMENT CABINETS FOR A TW WIRELESS PERSONAL COMMUNICATIONS SERVICE NETWORK.

THE RADIO EQUIPMENT CONSISTS OF:  
A TOTAL OF THREE (3) ANTENNAS (51.3"x6.1"x2") THREE (3) REMOTE UNITS (17"x33"x9.25") ONE (1) Q CELL MAIN UNIT (17"x33"x9.25") ONE (1) UPS ENCLOSURE (24"x36"x14")

THE REQUIRED POWER AND TELEPHONE CONNECTIONS WILL BE MADE TO EXISTING ELECTRIC AND TELCO POLE AND EXTENDED UNDERGROUND TO EQUIPMENT RACK

NO.	DATE	REVISIONS	BY	CHKD	APP'LD
3	09/04/01	CONSTRUCTION SUBMIT (REV1)	DLL		
2	08/24/01	CONSTRUCTION SUBMIT	DLL		
1	08/10/01	CONSTRUCTION REVIEW	DLL		



**TW WIRELESS, LLC.**

SITE INFORMATION	
RUSHMORE COMMUNICATIONS 1711 CAMBELL STREET RAPID CITY, SD 57701 RPC-008A	
DESIGN TYPE	
PANEL ANTENNAS ON EXISTING LATTICE TOWER WITH EQUIPMENT RACK	
SHEET TITLE	
TITLE SHEET	
SHEET NUMBER	REV
T-1	2
PLOT DATE: 09/04/01	

This document and the design it covers are the property of TW Wireless Service, LLC. They are hereby loaned out to you for your use only. No reproduction or distribution for any other purpose is permitted without the express written consent of TW Wireless Service, LLC.