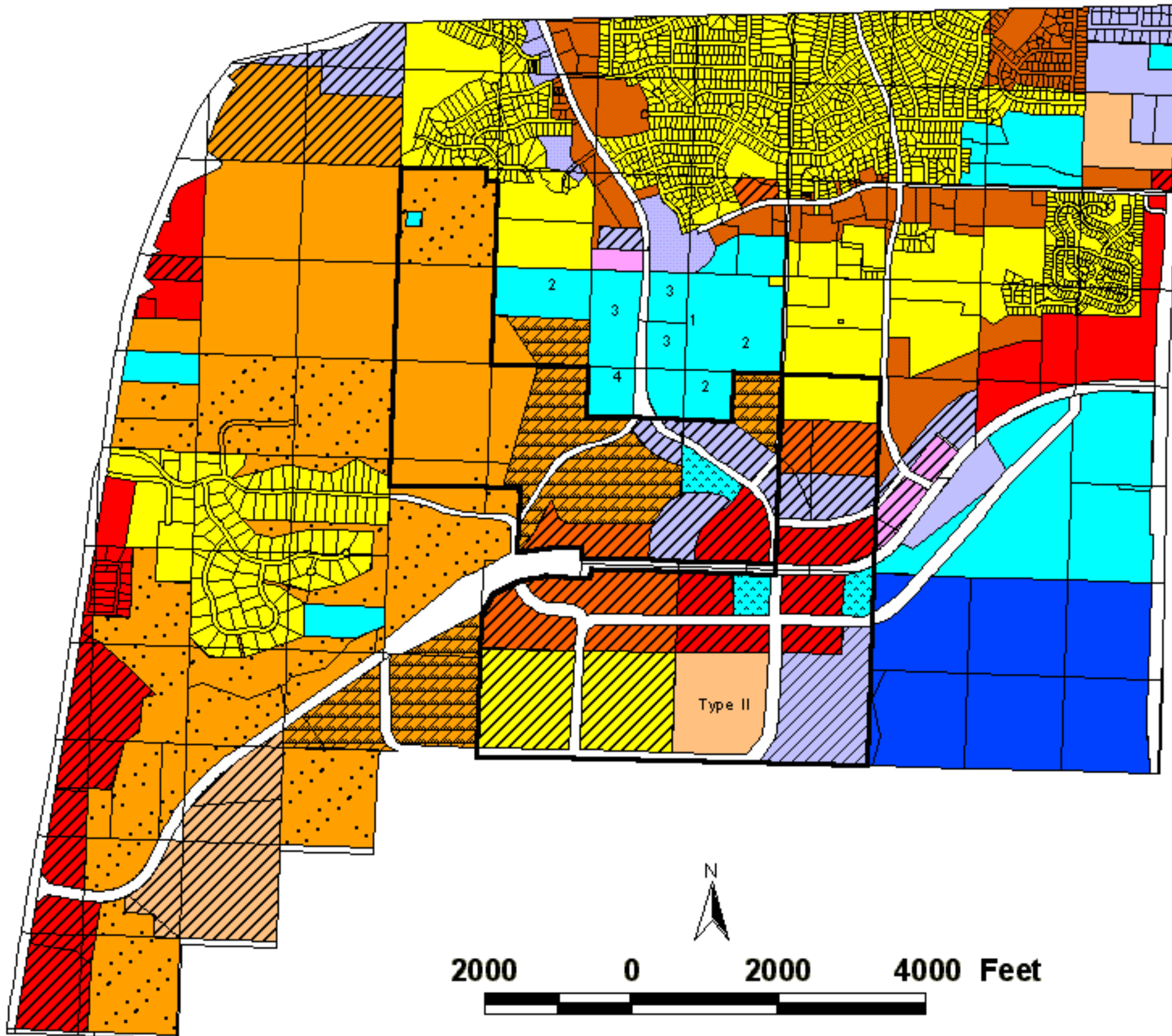


**Lazy P-6 Property
and the Broucek Property
as proposed by the Future Land Use Committee**



- Future Land Use Designations**
- Low Density Residential
 - LDR w/PRD
 - Medium Density Residential
 - MDR w/PRD
 - Mobile Home Park
 - Mobile Home Residential
 - PRD Max Density 1 du / 3ac
 - PRD Max Density 1 du / 2ac
 - PRD Max Density 1 du / ac
 - PRD Max Density 2.5 du / ac
 - PRD Max Density 6.7 du/ac
 - Planned Unit Development
 - Neighborhood Commercial
 - NC w/PCD
 - Office Commercial
 - OC w/PCD
 - General Commercial
 - GC w/PCD
 - Light Industrial
 - LI w/PLID
 - Heavy Industrial
 - Public
 - Public Drainage
 - ROW

- Alternate Land Use
1. LDR
 2. PRD Max Density 6.7 du/ac
 3. OC w/PCD 400 feet back from ROW
 4. Drainage

