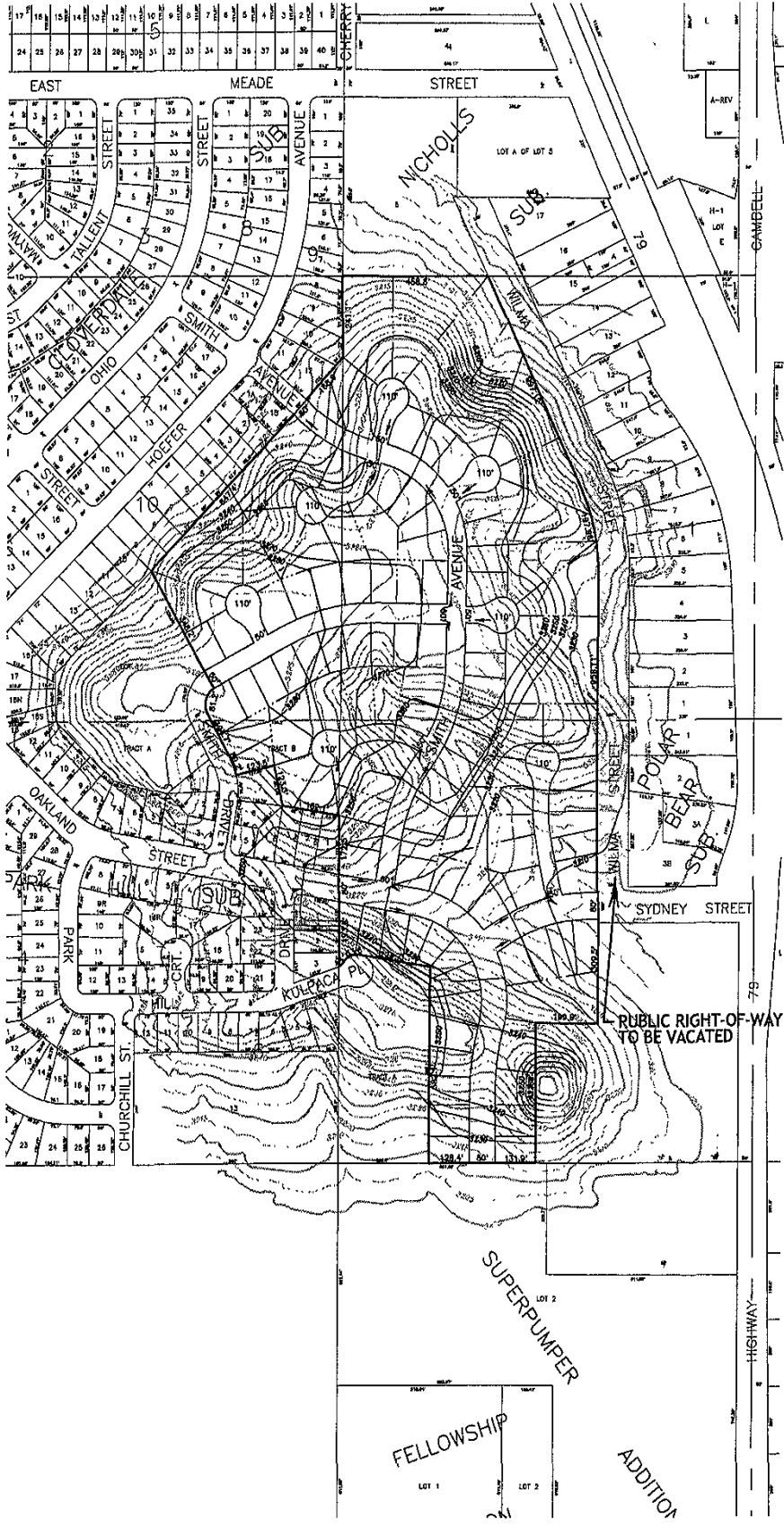


LAYOUT PLAT FOR

01PL091 PARK HILL EAST SUBDIVISION



SITE DATA

AREA:	51.7 AC.
LEGAL DESCRIPTION:	UNPLATTED PORTION OF S1/2 OF NE1/4 AND N1/2 OF SE1/4, SECTION 7, T1N, R8E, B.H.M.
ZONING:	MEDIUM DENSITY RESIDENTIAL
NUMBER OF LOTS:	117
OWNER/DEVELOPER:	PARK HILL DEVELOPMENT, INC.

LEGEND

- 3260 EXISTING CONTOUR
- 3280 PROPOSED CONTOUR

