

- NOTES:
- SEE MECHANICAL FOR GAS SERVICE & METER LOCATION.
  - SEE ELECTRICAL FOR ELECTRICAL SERVICE METER & CABINET LOCATION.
  - SEE PLUMBING PLAN FOR POST INDICATOR VALVE.
  - SEE PLUMBING PLAN FOR PERIMETER DRAIN.
  - SEE PLUMBING PLAN FOR ROOF DRAIN.
  - INSTALL SILT FENCE, SEE CITY OF RAPID CITY DETAILS 148-1, 148-1A, AND 148-1B.

CLARK ENGINEERING SURVEY CONTROL			
NORTHING	EASTING	ELEVATION	DESCRIPTION
988.6020	578.6343	3248.14	CP-200 PROP. COR.
999.9384	999.9780	3234.89	CP-201 PROP. COR.
1342.5282	601.6492	3284.83	CP-202
1187.9803	1168.5275	3279.83	CP-203

**FOR GRADING PURPOSES ONLY.**  
 CITY OF RAPID CITY REVIEW COMMENTS HAVE NOT BEEN RECEIVED AS OF 3/7/01. FINAL GRADING MAY CHANGE AFTER RECEIPT OF COMMENTS.

- LEGEND**
- CONTROL POINT (REBAR, SPIKE, ETC.)
  - FOUND PROPERTY CORNER (REBAR)
  - SPOT ELEVATION
  - MANHOLE
  - LIGHT POLE
  - POWER POLE
  - GUY ANCHOR
  - SIGN
  - DECIDUOUS TREE
  - TREE EDGE
  - FIRE HYDRANT
  - CURB STOP
  - VALVE (WATER, GAS, ETC.)
  - SS — SANITARY SEWER
  - SF — STORM SEWER
  - UG — UNDERGROUND POWER
  - W — WATER LINE
  - CURB AND GUTTER
  - PROPERTY LINE
  - PERMANENT EASEMENT LINE
  - INDEX CONTOUR
  - INTERMEDIATE CONTOUR
  - ➔ DRAINAGE ARROW
  - PROPOSED MANHOLE
  - PROPOSED CLEANOUT
  - PROPOSED FIRE HYDRANT
  - PROPOSED CURBSTOP
  - PROPOSED P.I.V.
  - PROPOSED WATER VALVE
  - PROPOSED TYPE "B" INLET
  - PROPOSED TYPE "E" INLET
  - PROPOSED SANITARY SEWER
  - PROPOSED STORM SEWER
  - PROPOSED WATER LINE

1770 Rapid Road  
 PO Box 866  
 Rapid City, SD 57709  
 (605) 343-6747  
 Fax (605) 355-6838  
 www.clark-eng.com

**CLARK**  
 ENGINEERING CORPORATION

SHEET TITLE  
**GRADING PLAN**  
 PROJECT  
**HOWARD JOHNSON EXPRESS**  
**RAPID CITY, SOUTH DAKOTA**

REVISIONS

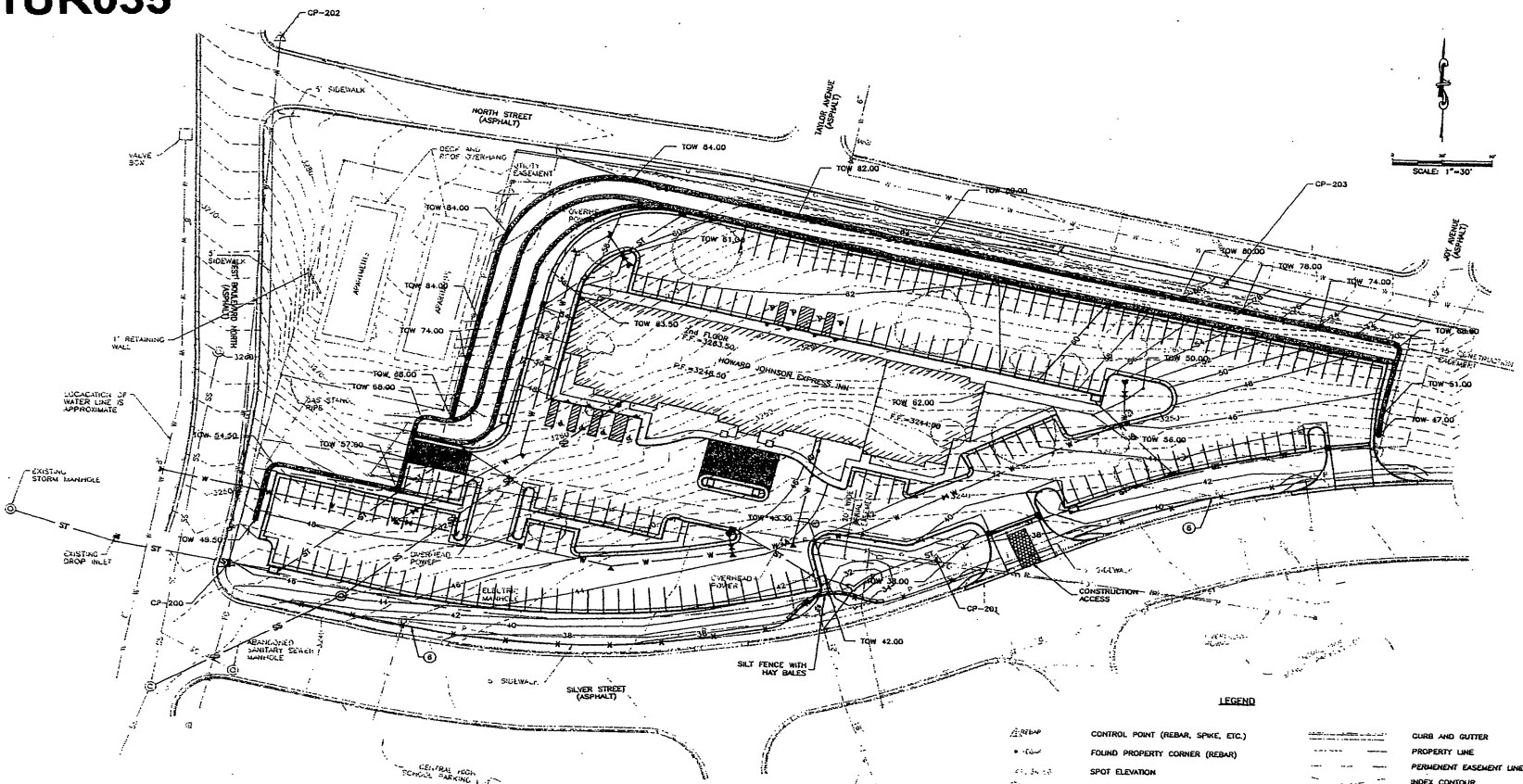
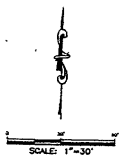
NO.	DATE	DESCRIPTION
1	MS	DRAWN BY
2	TC	CHECKED BY
3	3-5-01	DATE
4		PROJECT NO.
5		REVISION
6		SHEET NO.

*170 Parking Spaces*

**RECEIVED**

JUN - 8 2001  
 Rapid City  
 Planning Department

CLARK ENGINEERING CORPORATION, 1770 Rapid Road, Rapid City, SD 57709, (605) 343-6747, Fax (605) 355-6838, www.clark-eng.com



- NOTES:
1. SEE MECHANICAL FOR GAS SERVICE & METER LOCATION.
  2. SEE ELECTRICAL FOR ELECTRICAL SERVICE METER & CABINET LOCATION.
  3. SEE PLUMBING PLAN FOR POST INDICATOR VALVE.
  4. SEE PLUMBING PLAN FOR PERIMETER DRAIN.
  5. SEE PLUMBING PLAN FOR ROOF DRAIN.
  6. INSTALL SILT FENCE. SEE CITY OF RAPID CITY DETAILS 148-1, 148-1A, AND 148-1B.

CLARK ENGINEERING SURVEY CONTROL			
NORTHING	EASTING	ELEVATION	DESCRIPTION
988.6020	578.6343	3246.14	CP-200 PROP. COR.
999.9384	999.9780	3234.89	CP-201 PROP. COR.
1342.5282	601.8492	3281.63	CP-202
1187.9803	1168.5275	3278.63	CP-203

FOR GRADING PURPOSES ONLY. CITY OF RAPID CITY REVIEW COMMENTS HAVE NOT BEEN RECEIVED AS OF 3/7/01. FINAL GRADING MAY CHANGE AFTER RECEIPT OF COMMENTS.

- LEGEND**
- REBAR
  - FOUND PROPERTY CORNER (REBAR)
  - △ SPOT ELEVATION
  - MANHOLE
  - LIGHT POLE
  - POWER POLE
  - GUT ANCHOR
  - SIGN
  - DECIDUOUS TREE
  - FIRE HYDRANT
  - CURB STOP
  - VALVE (WATER, GAS, ETC.)
  - S — SANITARY SEWER
  - ST — STORM SEWER
  - P — UNDERGROUND POWER
  - W — WATER LINE
  - C — CURB AND GUTTER
  - P — PROPERTY LINE
  - E — PERMANENT EASEMENT LINE
  - I — INDEX CONTOUR
  - M — INTERMEDIATE CONTOUR
  - DRAINAGE ARROW
  - PROPOSED MANHOLE
  - PROPOSED CLEANDIRT
  - PROPOSED FIRE HYDRANT
  - PROPOSED CURBSTOP
  - PROPOSED PLUM
  - PROPOSED WATER VALVE
  - PROPOSED TYPE "B" INLET
  - PROPOSED TYPE "E" INLET
  - ST — PROPOSED STORM SEWER
  - S — PROPOSED SANITARY SEWER
  - W — PROPOSED WATER LINE

170 Parking Spaces

RECEIVED