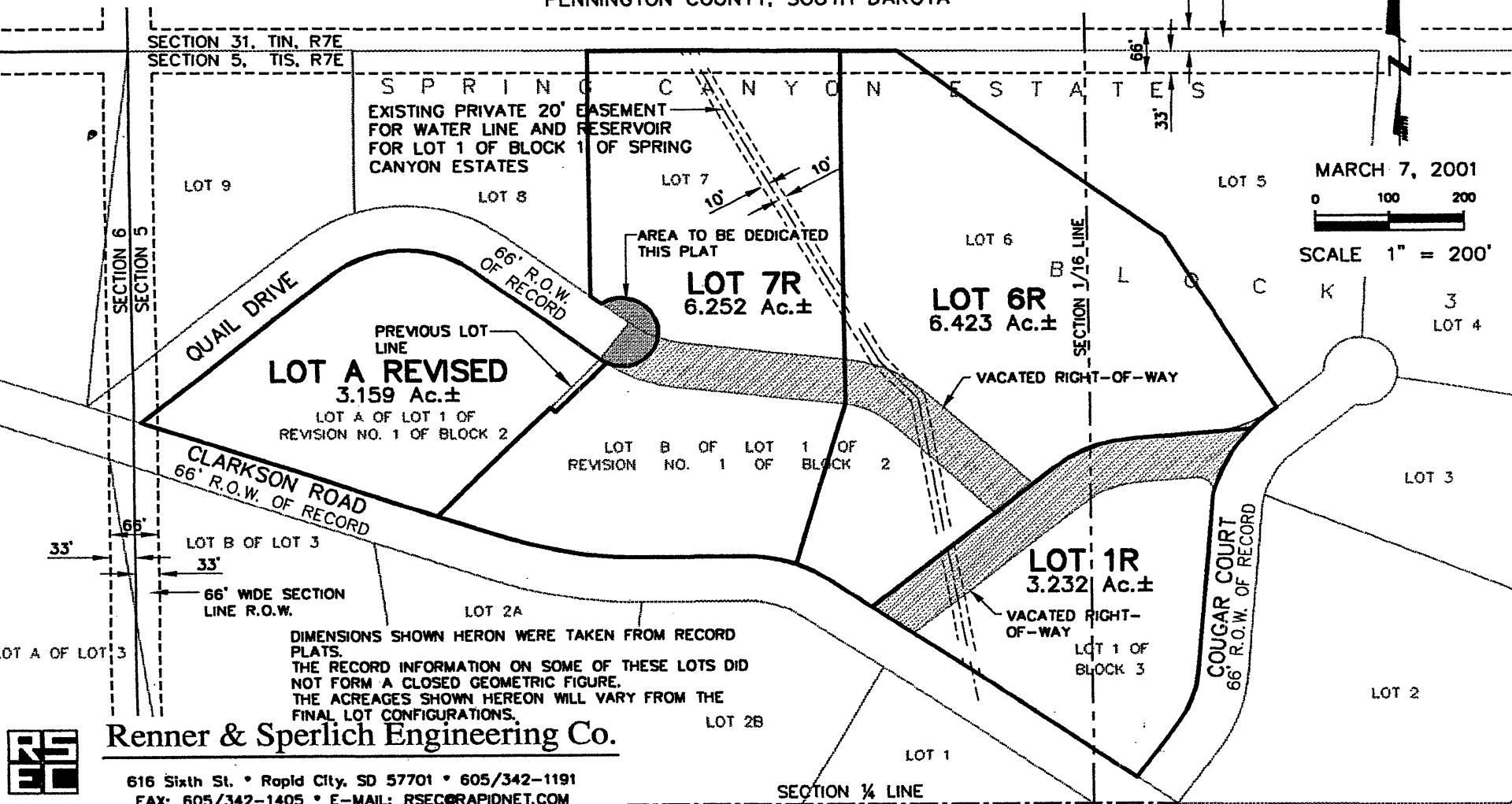


# LOT A REVISED OF BLOCK 2 AND LOTS 1R, 6R AND 7R OF BLOCK 3 SPRING CANYON ESTATES

(Lot A Revised of Block 2: formerly Lot A of Lot 1 of Revision No. 1 of Block 2 and a portion of Lot B of Lot 1 of Revision No. 1 of Block 2; Lot 1R: formerly Lot 1 of Block 3 and Vacated Right-Of-Way; Lot 6R: formerly Lot 6 of Block 3 and a portion of Vacated Right-Of-Way and a portion of Lot B of Lot 1 of Revision No. 1 of Block 2; Lot 7R: formerly Lot 7 of Block 3 and a portion of Vacated Right-Of-Way and a portion of Lot B of Lot 1 of Revision No. 1 of Block 2, All located in Spring Canyon Estates)

LOCATED IN GOVERNMENT LOT 3 AND GOVERNMENT LOT 4  
SECTION 5, T1S, R7E, BHM  
PENNINGTON COUNTY, SOUTH DAKOTA

**01SV010**



MARCH 7, 2001  
0 100 200  
SCALE 1" = 200'

DIMENSIONS SHOWN HEREON WERE TAKEN FROM RECORD PLATS. THE RECORD INFORMATION ON SOME OF THESE LOTS DID NOT FORM A CLOSED GEOMETRIC FIGURE. THE ACREAGES SHOWN HEREON WILL VARY FROM THE FINAL LOT CONFIGURATIONS.

**Renner & Sperlich Engineering Co.**

616 Sixth St. • Rapid City, SD 57701 • 605/342-1191  
FAX: 605/342-1405 • E-MAIL: RSEC@RAPIDNET.COM

