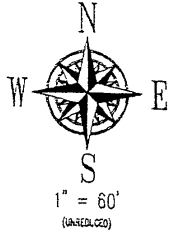


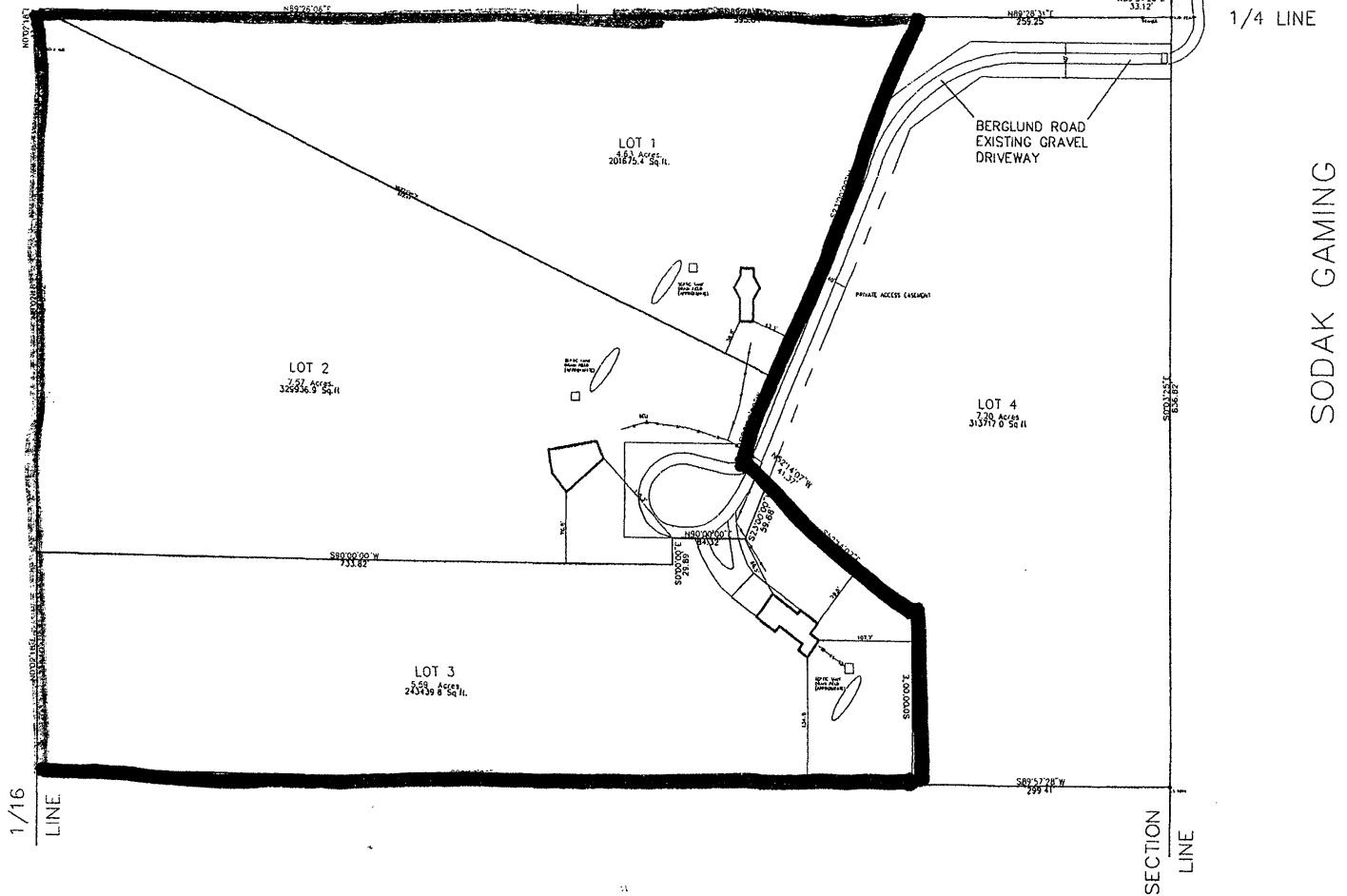
01RZ024



1" = 60'  
(AS SHOWN)



# TRACT 1 KOVARIK SUBDIVISION



SODAK GAMING

LAYOUT PLAT OF LOTS 1-4 OF SQUIRRELLY ACRES  
 LOCATED IN NE1/4 SE 1/4 OF SECTION 22 T1N, R7E, BHM  
 RAPID CITY, PENNINGTON COUNTY, SOUTH DAKOTA

DESIGNED BY: BR  
 DRAWN BY: BR

DATE: 4/10/01  
 CHECKED BY: WT

PROJECT No. 00-12-00  
 1330 MAIN STREET, P.O. BOX 2154  
 RAPID CITY, SOUTH DAKOTA 57709  
 (605) 346-1336 FAX (605) 341-1112

FISK LAND SURVEYING  
 AND CONSULTING ENGINEERS, INC.