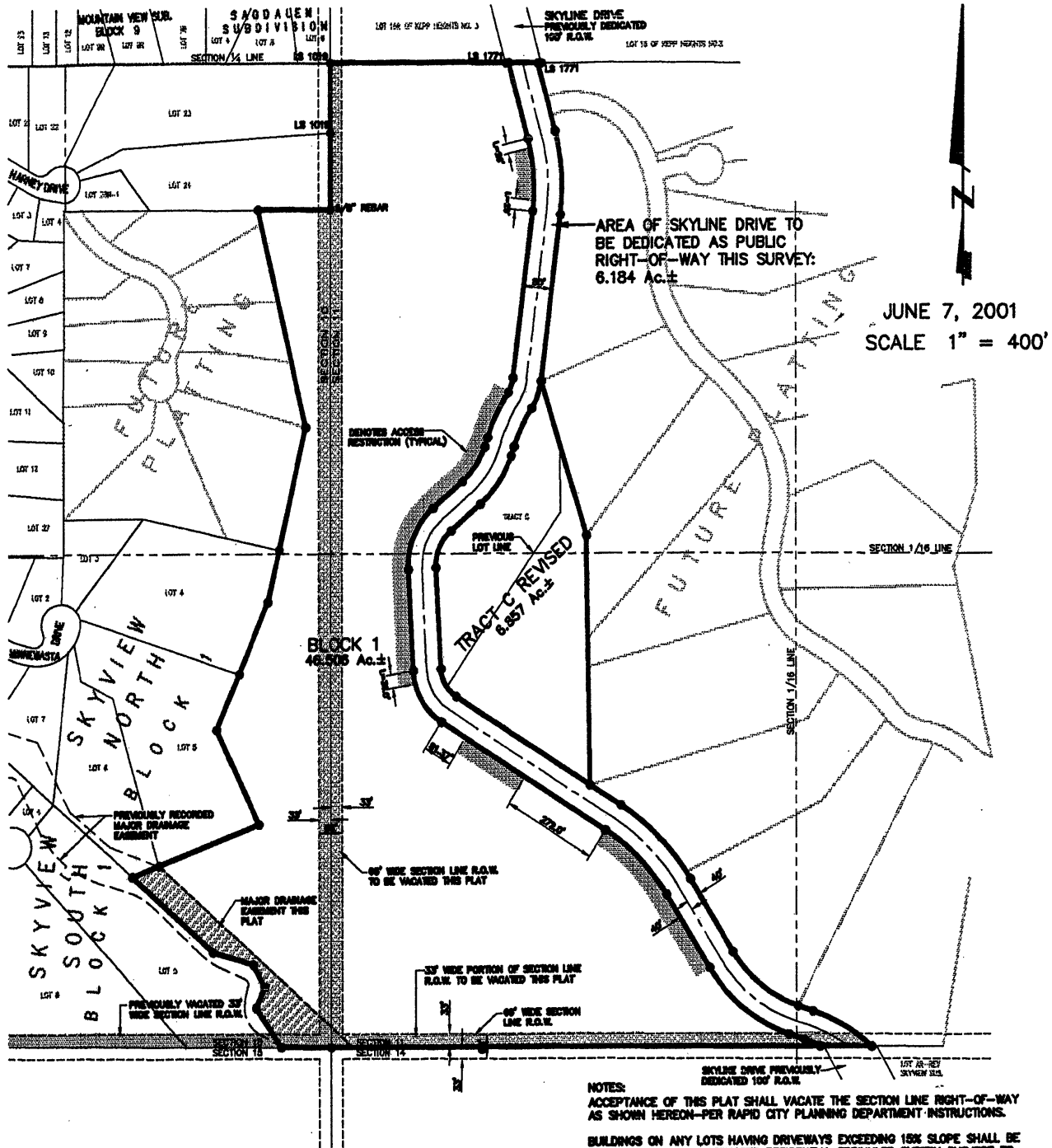


# PLAT OF TRACT C REVISED OF SW<sup>1</sup>/<sub>4</sub> OF SECTION 11, SKYLINE DRIVE RIGHT-OF-WAY, AND BLOCK 1 OF SKYLINE PINES SUBDIVISION

(formerly Tract C of SW<sup>1</sup>/<sub>4</sub> of Section 11, a portion of the W<sup>1</sup>/<sub>2</sub> of the SW<sup>1</sup>/<sub>4</sub>, a portion of the SE<sup>1</sup>/<sub>4</sub> of the SW<sup>1</sup>/<sub>4</sub> of Section 11, and a portion of the E<sup>1</sup>/<sub>2</sub> of the SE<sup>1</sup>/<sub>4</sub> of Section 10)

LOCATED IN THE E<sup>1</sup>/<sub>2</sub> OF THE SE<sup>1</sup>/<sub>4</sub> OF SECTION 10, THE SE<sup>1</sup>/<sub>4</sub> OF THE SW<sup>1</sup>/<sub>4</sub>, AND THE W<sup>1</sup>/<sub>2</sub> OF THE SW<sup>1</sup>/<sub>4</sub> OF SECTION 11, T1N, R7E, B.H.M. RAPID CITY, PENNINGTON COUNTY, SOUTH DAKOTA



JUNE 7, 2001  
SCALE 1" = 400'

**NOTE:**  
ACCEPTANCE OF THIS PLAT HEREBY VACATES THAT PORTION OF THE PREVIOUSLY DEDICATED RIGHT-OF-WAY OF SKYLINE DRIVE LYING IN THE W<sup>1</sup>/<sub>2</sub> OF THE SW<sup>1</sup>/<sub>4</sub>, AND THE SE<sup>1</sup>/<sub>4</sub> OF THE SW<sup>1</sup>/<sub>4</sub> OF SECTION 11, T1N, R7E, B.H.M., AS SHOWN ON THE PLAT IN THE STEEL FILE IN THE OFFICE OF THE PENNINGTON COUNTY REGISTER OF DEEDS.

**NOTES:**  
ACCEPTANCE OF THIS PLAT SHALL VACATE THE SECTION LINE RIGHT-OF-WAY AS SHOWN HEREON—PER RAPID CITY PLANNING DEPARTMENT INSTRUCTIONS.

BUILDINGS ON ANY LOTS HAVING DRIVEWAYS EXCEEDING 15% SLOPE SHALL BE EQUIPPED WITH AN AUTOMATED RESIDENTIAL SPRINKLER SYSTEM SUBJECT TO APPROVAL BY THE RAPID CITY FIRE DEPARTMENT.

MAXIMUM DRIVEWAY SLOPE SHALL NOT EXCEED THE LIMITS ESTABLISHED IN THE RAPID CITY STREET CRITERIA MANUAL WITHOUT WRITTEN APPROVAL OF THE CITY OF RAPID CITY.

SPECIFIC GEOTECHNICAL AND SLOPE STABILITY INFORMATION MUST BE SUBMITTED TO THE CITY OF RAPID CITY FOR REVIEW AND APPROVAL PRIOR TO THE ISSUANCE OF ANY BUILDING PERMITS.



**Renner & Sperlich Engineering Co.**

616 Sixth St. • Rapid City, SD 57701 • 605/342-1181  
FAX: 605/342-1408 & E-MAIL: RSE@CARDNET.COM

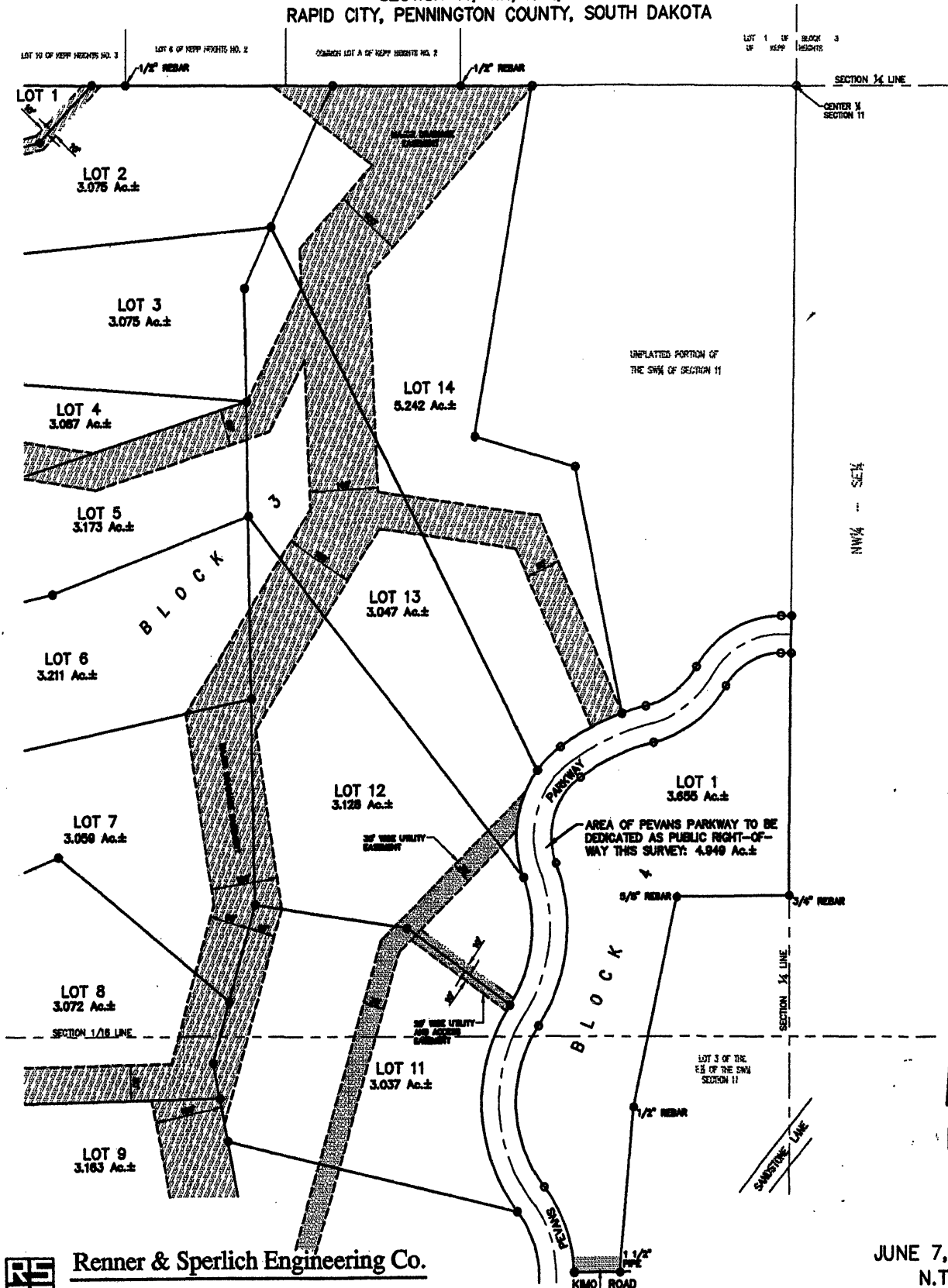
PLAT OF  
**LOTS 1 THRU 10 OF BLOCK 2, LOTS 1 THRU 14 OF BLOCK 3,  
 AND LOT 1 OF BLOCK 4**  
**SKYLINE PINES SUBDIVISION**

(formerly a portion of the SW $\frac{1}{4}$  of Section 11, T1N, R7E, B.H.M.)

LOCATED IN THE SW $\frac{1}{4}$   
 SECTION 11, T1N, R7E, B.H.M.

RAPID CITY, PENNINGTON COUNTY, SOUTH DAKOTA

01PL058



**Renner & Sperlich Engineering Co.**

616 Sixth St. • Rapid City, SD 57701 • 605/342-1191  
 FAX: 605/342-1405 • E-MAIL: RSE@RAPIDNET.COM

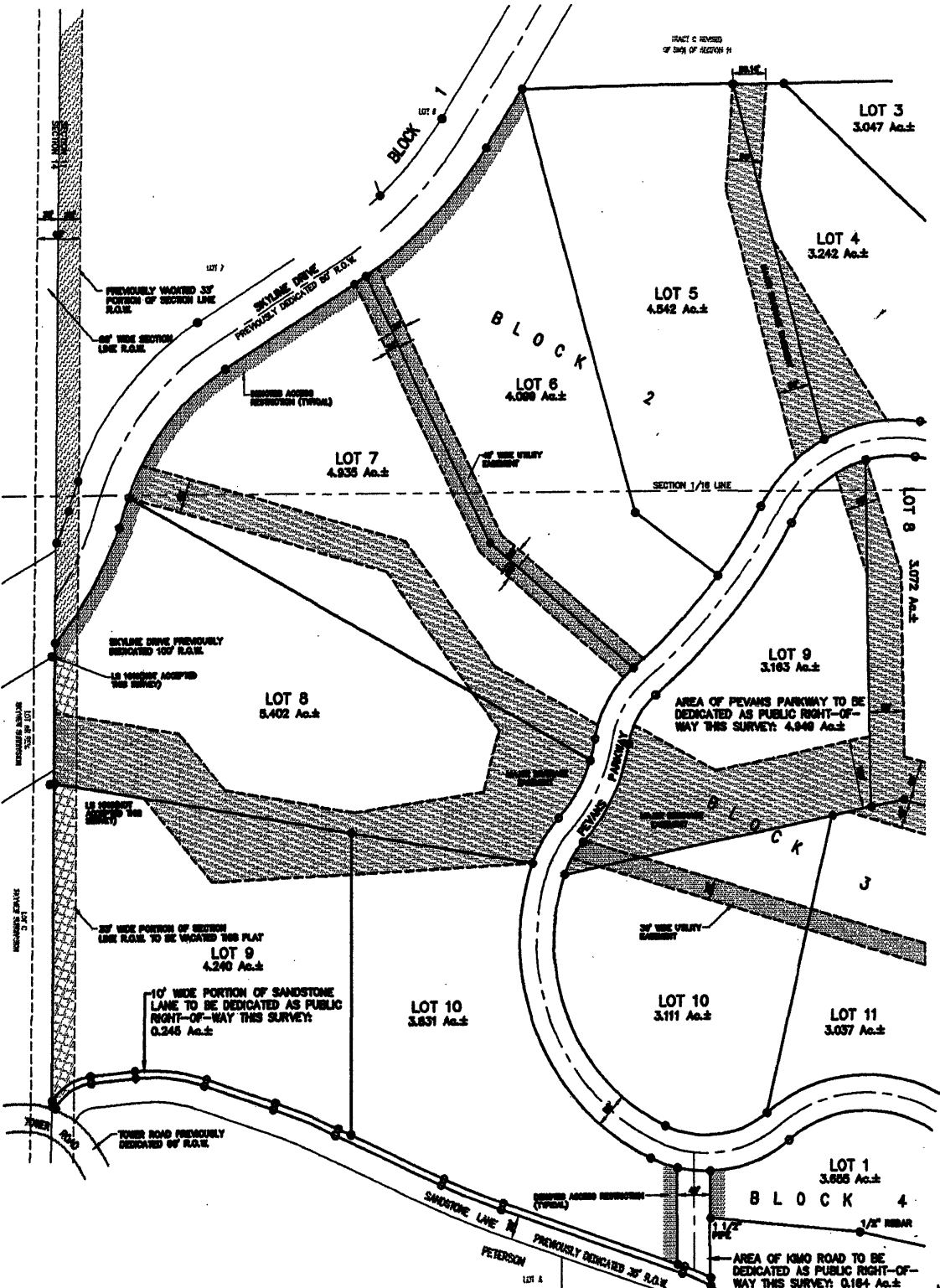
REMOVE ACCESS RESTRICTION (TYPICAL)

JUNE 7, 2001  
 N.T.S.

SHEET 2 OF

PLAT OF  
LOTS 1 THRU 10 OF BLOCK 2, LOTS 1 THRU 14 OF BLOCK 3,  
AND LOT 1 OF BLOCK 4  
SKYLINE PINES SUBDIVISION

(formerly a portion of the SW $\frac{1}{4}$  of Section 11, T1N, R7E, B.H.M.)  
LOCATED IN THE SW $\frac{1}{4}$   
SECTION 11, T1N, R7E, B.H.M.  
RAPID CITY, PENNINGTON COUNTY, SOUTH DAKOTA



JUNE 7, 2001  
N.T.S.



Renner & Sperlich Engineering Co.

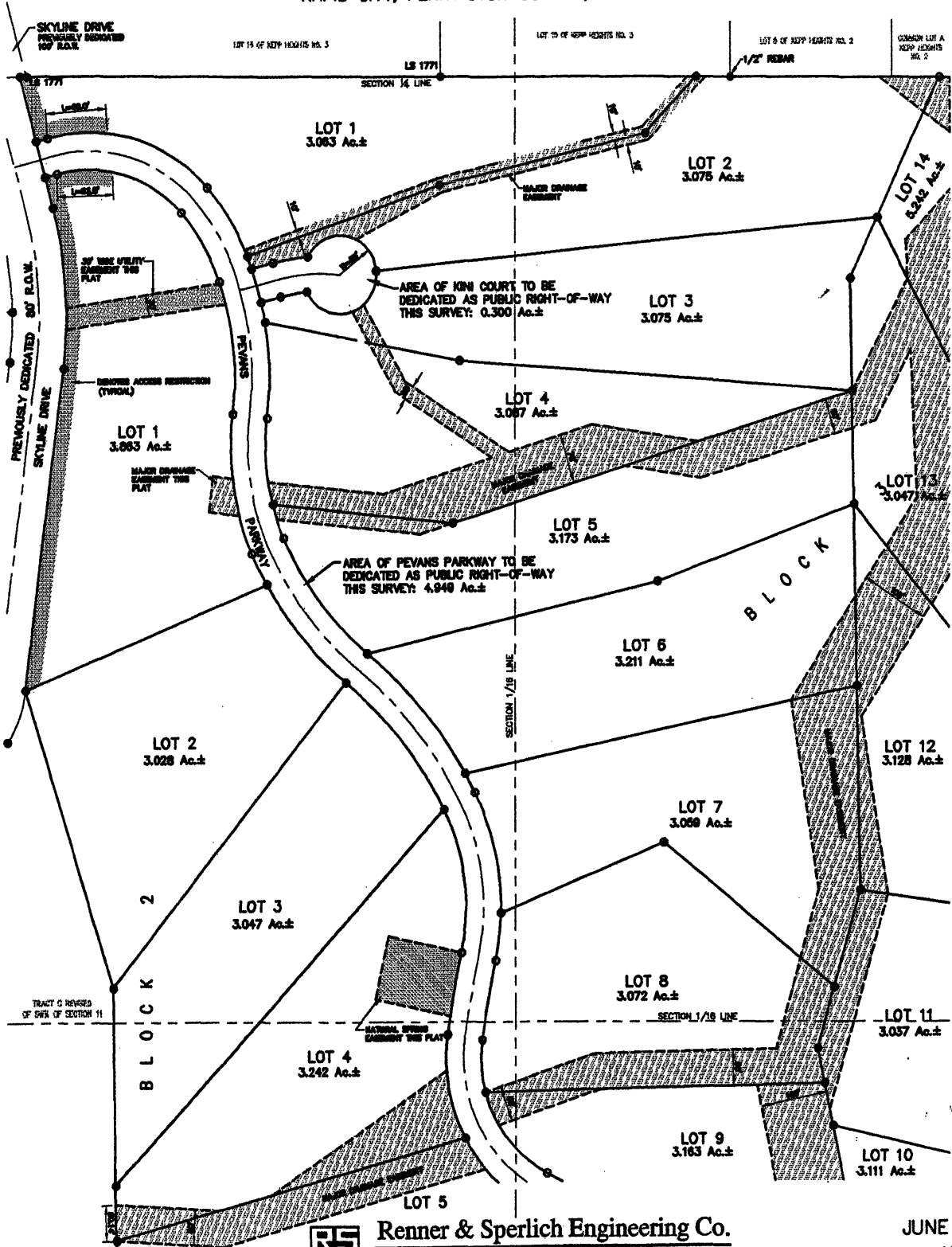
616 5th St. • Rapid City, SD 57701 • 605/342-1191  
FAX: 605/342-1405 • E-MAIL: RSE@ROADNET.COM

PLAT OF  
LOTS 1 THRU 10 OF BLOCK 2, LOTS 1 THRU 14 OF BLOCK 3,  
AND LOT 1 OF BLOCK 4  
SKYLINE PINES SUBDIVISION

(formerly a portion of the SW $\frac{1}{4}$  of Section 11, T1N, R7E, B.H.M.)

LOCATED IN THE SW $\frac{1}{4}$   
SECTION 11, T1N, R7E, B.H.M.

RAPID CITY, PENNINGTON COUNTY, SOUTH DAKOTA



Renner & Sperlich Engineering Co.



816 Sixth St. • Rapid City, SD 57701 • 605/342-1181  
FAX: 605/342-1405 • E-MAIL: RSE@RAPIDNET.COM

JUNE 7, 2001  
N.T.S.